

Basic Information

Product Name	Anti-HLA-DRA Antibody	
Gene Name	HLA-DRA	
Source	Rabbit	
Clonality	Polyclonal	
Isotype	IgG	
Species Reactivity	human	
Tested Application	WB, IHC, FCM, ELISA	
Contents	500 ug/ml antibody with PBS, 0.02% NaN ₃ , 1 mg/ml BSA and 50% glycerol.	
Immunogen	E.coli-derived human HLA-DR/HLA-DRA recombinant protein (Position: I26-L254).	
Concentration	500 ug/ml	
Purification	Immunogen affinity purified.	
Observed MW	36 kDa	
Dilution Ratios	Western blot (WB): 1:5000-20000 Immunohistochemistry (IHC): 1:50-400 Flow Cytometry (Fixed): 1:50-200 Enzyme linked immunosorbent assay (ELISA): 1:100-1000 (Boiling the paraffin sections in 10mM citrate buffer,pH6.0,or PH8.0 EDTA repair liquid for 20 mins is required for the staining of formalin/paraffin sections.) Optimal working dilutions must be determined by end user.	

Storage

12 months from date of receipt, -20°C as supplied. 6 months 2 to 8°C after reconstitution. Avoid repeated freezing and thawing.

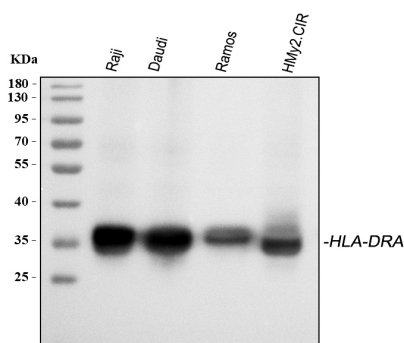
Background Information

HLA class II histocompatibility antigen, DR alpha chain is a protein that in humans is encoded by the HLA-DRA gene. It is mapped to 6p21.32. HLA-DRA is one of the HLA class II alpha chain paralogues. This class II molecule is a heterodimer consisting of an alpha and a beta chain, both anchored in the membrane. It plays a central role in the immune system by presenting peptides derived from extracellular proteins. Class II molecules are expressed in antigen presenting cells (APC: B lymphocytes, dendritic cells, macrophages). The alpha chain is approximately 33-35 kDa and its gene contains 5 exons. Exon 1 encodes the leader peptide, exons 2 and 3 encode the two extracellular domains, and exon 4 encodes the transmembrane domain and the cytoplasmic tail. DRA does not have polymorphisms in the peptide binding part and acts as the sole alpha chain for DRB1, DRB3, DRB4 and DRB5.

Reference

Anti-HLA-DRA Antibody被引用在2文献中。

Selected Validation Data



Western blot analysis of HLA-DRA using anti-HLA-DRA antibody (A01195). The sample well of each lane was loaded with 30 ug of sample under reducing conditions.

Lane 1: human Raji whole cell lysates,

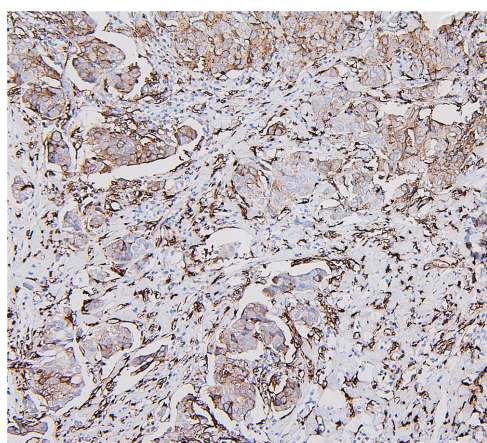
Lane 2: human Daudi whole cell lysates,

Lane 3: human Ramos whole cell lysates,

Lane 4: human HMy2,CIR whole cell lysates.

After electrophoresis, proteins were transferred to a membrane.

Then the membrane was incubated with rabbit anti-HLA-DRA antigen affinity purified polyclonal antibody (A01195) at a dilution of 1:1000 and probed with a goat anti-rabbit IgG-HRP secondary antibody (Catalog # BA1054). The signal is developed using ECL Plus Western Blotting Substrate (Catalog # AR1197). A specific band was detected for HLA-DRA at approximately 36 kDa. The expected band size for HLA-DRA is at 29 kDa.



IHC analysis of HLA-DRA using anti-HLA-DRA antibody (A01195).

HLA-DRA was detected in a paraffin-embedded section of human mammary cancer tissue. The tissue section was incubated with

rabbit anti-HLA-DRA Antibody (A01195) at a dilution of 1:200 and

developed using HRP Conjugated Rabbit IgG Super Vision Assay Kit (Catalog # SV0002) with DAB (Catalog # AR1027) as the

chromogen.

Product datasheet
Anti-HLA-DRA Antibody
Catalog Number: **A01195**

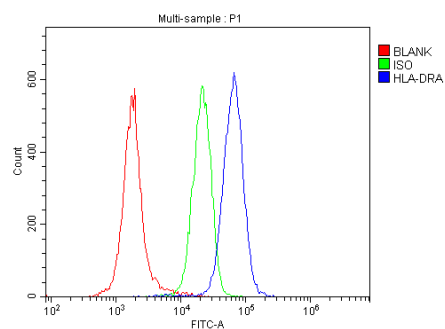
BOSTER[®]

antibody and ELISA experts

BOSTER BIOLOGICAL TECHNOLOGY

Building C21, 3rd to 5th Floors, Optics Valley Biopharmaceutical Accelerator,
East Lake High-Tech Development Zone, Wuhan.

Web: www.boster.com **Phone:** 027-67845390/1/2 **Email:** boster@boster.com



Flow cytometry analysis of h_PBMC cell (1:100) DyLight 488 conjugated goat anti- rabbit IgG(blue) was used as secondary antibody. Isotype control antibody (Green line) was rabbit IgG DyLight 488. Unlabelled sample (Red line).