

## Basic Information

Product Name	Anti-VCAM1 Antibody
Gene Name	VCAM1
Source	Rabbit
Clonality	Polyclonal
Isotype	IgG
Species Reactivity	human
Tested Application	WB, ELISA(Cap)
Contents	500 ug/ml antibody with PBS, 0.02% NaN <sub>3</sub> , 1 mg/ml BSA and 50% glycerol.
Immunogen	E. coli-derived human VCAM1 recombinant protein (Position: F25-L270).
Concentration	500 ug/ml
Purification	Immunogen affinity purified.
Observed MW	85-110 kDa
Dilution Ratios	Western blot (WB):1:500-2000 ELISA(Cap): 1:50-1:200

## Storage

12 months from date of receipt, -20°C as supplied.

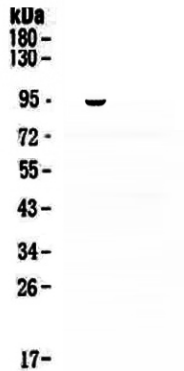
## Background Information

CD106(cluster of differentiation 106) also known as vascular cell adhesion molecule 1(VCAM-1), is a protein that in humans is encoded by the VCAM1 gene. In inflammatory conditions and in cardiac allografts undergoing rejection, VCAM1 is upregulated in endothelium of postcapillary venules. Arterial expression of VCAM1 is also found in experimental models of atherosclerosis in the rabbit. This gene is mapped to chromosome 1 by Southern analysis of somatic cell hybrids. VCAM-1 functions as a cell adhesion molecule. The VCAM-1 protein mediates the adhesion of lymphocytes, monocytes, eosinophils, and basophils to vascularendothelium. It also functions in leukocyte-endothelial cell signal transduction, and it may play a role in the development of atherosclerosis and rheumatoid arthritis. CAM741 works similar to cotransin in that it represses the biosynthesis of VCAM1 cells by blocking the process of cotranslational translocation, which is dependent on the signal peptide of VCAM1. Among the lung metastasis signature genes identified, several, including VCAM1, were functionally validated.

## Reference

Anti-VCAM1 Antibody被引用在6文献中。

## Selected Validation Data



Western blot analysis of VCAM1 using anti-VCAM1 antibody (A01199-1).

Lane 1: recombinant human VCAM1 protein 1ng.

After electrophoresis, proteins were transferred to a membrane. Then the membrane was incubated with rabbit anti-VCAM1 antigen affinity purified polyclonal antibody (A01199-1) at a dilution of 1:1000 and probed with a goat anti-rabbit IgG-HRP secondary antibody (Catalog # BA1054). The signal is developed using ECL Plus Western Blotting Substrate (Catalog # AR1197). A specific band was detected for VCAM1 at approximately 85-110 kDa.