

## Basic Information

Product Name	Anti-MAP2 Antibody
Gene Name	MAP2
Source	Rabbit
Clonality	Polyclonal
Isotype	IgG
Species Reactivity	human, mouse, rat
Tested Application	WB, ELISA
Contents	500 ug/ml antibody with PBS, 0.02% NaN <sub>3</sub> , 1 mg/ml BSA and 50% glycerol.
Immunogen	E. coli-derived human MAP2 recombinant protein (Position: Q64-L133).
Concentration	500 ug/ml
Purification	Immunogen affinity purified.
Observed MW	280 kDa
Dilution Ratios	Western blot (WB):1:500-2000 ELISA: 1:100-1000

## Storage

12 months from date of receipt, -20°C as supplied.

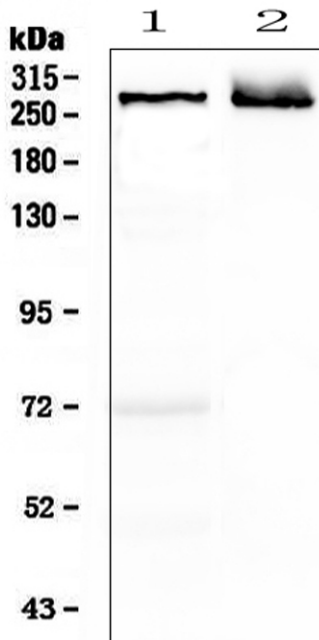
## Background Information

Microtubule-associated protein 2 is a protein that in humans is encoded by the MAP2 gene. This gene encodes a protein that belongs to the microtubule-associated protein family. The proteins of this family are thought to be involved in microtubule assembly, which is an essential step in neurogenesis. The products of similar genes in rat and mouse are neuron-specific cytoskeletal proteins that are enriched in dendrites, implicating a role in determining and stabilizing dendritic shape during neuron development. A number of alternatively spliced variants encoding distinct isoforms have been described.

## Reference

Anti-MAP2 Antibody被引用在4文献中。

## Selected Validation Data



Western blot analysis of MAP2 using anti-MAP2 antibody (A01201). The sample well of each lane was loaded with 30 ug of sample under reducing conditions.

Lane 1: rat brain tissue lysates,

Lane 2: mouse brain tissue lysates.

After electrophoresis, proteins were transferred to a membrane. Then the membrane was incubated with rabbit anti-MAP2 antigen affinity purified polyclonal antibody (A01201) at a dilution of 1:1000 and probed with a goat anti-rabbit IgG-HRP secondary antibody (Catalog # BA1054). The signal is developed using ECL Plus Western Blotting Substrate (Catalog # AR1197). A specific band was detected for MAP2 at approximately 280 kDa. The expected band size for MAP2 is at 200 kDa.