

## Basic Information

<b>Product Name</b>	Anti-Thioredoxin/TXN Antibody	
<b>Gene Name</b>	Txn	
<b>Source</b>	Rabbit	
<b>Clonality</b>	Polyclonal	
<b>Isotype</b>	IgG	
<b>Species Reactivity</b>	mouse, rat	
<b>Tested Application</b>	WB, IHC, ICC/IF, ELISA	
<b>Contents</b>	500 ug/ml antibody with PBS, 0.02% NaN <sub>3</sub> , 1 mg/ml BSA and 50% glycerol.	
<b>Immunogen</b>	E. coli-derived mouse Thioredoxin TRX recombinant protein (Position: V2-A105).	
<b>Concentration</b>	500 ug/ml	
<b>Purification</b>	Immunogen affinity purified.	
<b>Observed MW</b>	12 kDa	
<b>Dilution Ratios</b>	Western blot (WB):	1:500-2000
	Immunohistochemistry (IHC):	1:50-400
	Immunocytochemistry/Immunofluorescence (ICC/IF):	1:50-400
	Enzyme linked immunosorbent assay (ELISA):	1:100-1000
	(Boiling the paraffin sections in 10mM citrate buffer, pH6.0, or PH8.0 EDTA repair liquid for 20 mins is required for the staining of formalin/paraffin sections.) Optimal working dilutions must be determined by end user.	

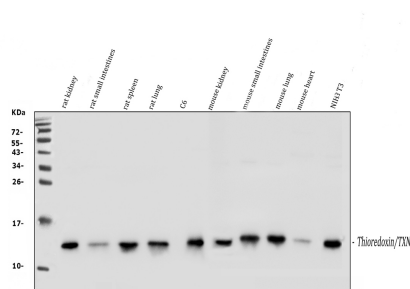
## Storage

12 months from date of receipt, -20°C as supplied.

## Background Information

Thioredoxin is a class of small redox proteins known to be present in all organisms. It is mapped to 9q31.3. The protein encoded by this gene acts as a homodimer and is involved in many redox reactions. The encoded protein is active in the reversible S-nitrosylation of cysteines in certain proteins, which is part of the response to intracellular nitric oxide. This protein is found in the cytoplasm. Two transcript variants encoding different isoforms have been found for this gene.

## Selected Validation Data



Western blot analysis of anti-Thioredoxin TRX antibody (A01219-1).

The sample well of each lane was loaded with 30 ug of sample under reducing conditions.

Lane 1: rat kidney tissue lysates,

Lane 2: rat small intestine tissue lysates,

Lane 3: rat spleen tissue lysates,

Lane 4: rat lung tissue lysates,

Lane 5: rat C6 whole cell lysates,

Lane 6: mouse kidney tissue lysates,

Lane 7: mouse small intestine tissue lysates,

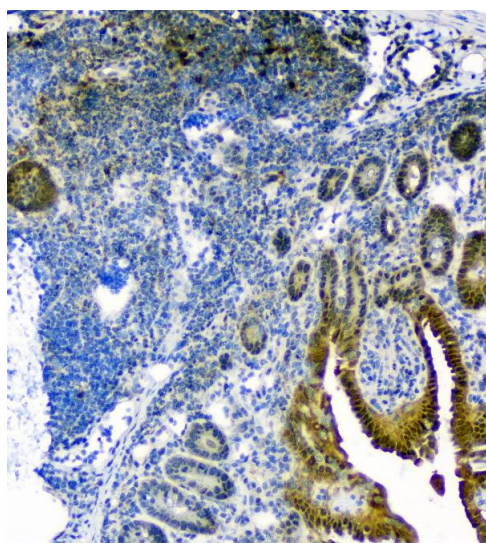
Lane 8: mouse lung tissue lysates,

Lane 9: mouse heart tissue lysates,

Lane 10: mouse NIH/3T3 whole cell lysates.

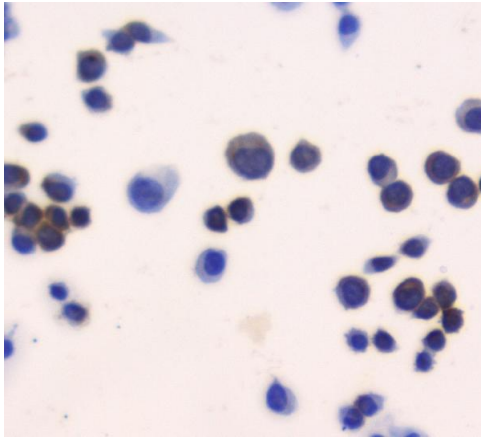
After electrophoresis, proteins were transferred to a membrane.

Then the membrane was incubated with rabbit anti-Thioredoxin TRX antigen affinity purified polyclonal antibody (A01219-1) and probed with a goat anti-rabbit IgG-HRP secondary antibody (Catalog # BA1054). The signal is developed using ECL Plus Western Blotting Substrate (Catalog # AR1197). A specific band was detected for Thioredoxin TRX at approximately 12 kDa. The expected band size for Thioredoxin TRX is at 12 kDa.



IHC analysis of Thioredoxin TRX using anti-Thioredoxin TRX antibody (A01219-1).

Thioredoxin TRX was detected in a paraffin-embedded section of mouse small intestine tissue. The tissue section was developed using HRP Conjugated Rabbit IgG Super Vision Assay Kit (Catalog # SV0002) with DAB (Catalog # AR1027) as the chromogen.



ICC analysis of Thioredoxin TRX using anti-Thioredoxin TRX antibody (A01219-1).

Thioredoxin TRX was detected in an immunocytochemical section of LLC cells. The section was developed using HRP Conjugated Rabbit IgG Super Vision Assay Kit (Catalog # SV0002) with DAB (Catalog # AR1027) as the chromogen.