

Basic Information

Product Name	Anti-Occludin/OCLN Antibody	
Gene Name	OCLN	
Source	Rabbit	
Clonality	Polyclonal	
Isotype	IgG	
Species Reactivity	human, mouse, rat	
Tested Application	WB, IHC, ICC/IF, IP	
Contents	500 ug/ml antibody with PBS, 0.02% NaN ₃ , 1 mg BSA and 50% glycerol.	
Immunogen	E.coli-derived human Occludin/OCLN recombinant protein (Position: S358-Q520). Human Occludin/OCLN shares 88.8% and 88.2% amino acid (aa) sequence identity with mouse and rat Occludin/OCLN, respectively.	
Concentration	500 ug/ml	
Purification	Immunogen affinity purified.	
Observed MW	59 kDa	
Dilution Ratios	Western blot (WB):	1:500-2000
	Immunohistochemistry (IHC):	1:50-400
	Immunocytochemistry/Immunofluorescence (ICC/IF):	1:50-400
	ImmunoPrecipitation (IP):	1:50
	(Boiling the paraffin sections in 10mM citrate buffer,pH6.0,or PH8.0 EDTA repair liquid for 20 mins is required for the staining of formalin/paraffin sections.) Optimal working dilutions must be determined by end user.	

Storage

12 months from date of receipt, -20°C as supplied.

Background Information

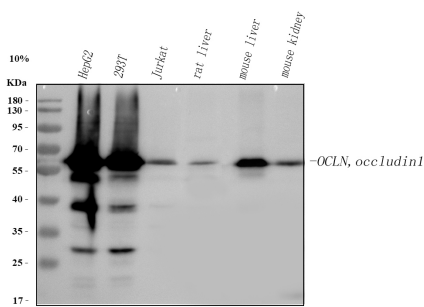
Occludin is an integral membrane protein that is located at tight junctions. It is a member of a family of proteins containing the highly conserved Marvel domain, which contains 4 transmembrane-helix regions. This gene is mapped to 5q13.2. Occludin regulates TGF-beta receptor type I localization for efficient TGF-beta-dependent dissolution of tight junctions during epithelial-mesenchymal transitions. Human Occludin is an essential hepatitis C virus (HCV) cell entry

factor that is able to render murine cells infectable with HCV glycoproteins. It has been found that occludin is involved in cell migration and functions to recruit active PI3 kinase to the leading edge, resulting in RAC1 activation and formation of lamellipodia.

Reference

Anti-Occludin/OCLN Antibody被引用在10文献中。

Selected Validation Data



Western blot analysis of anti-Occludin/OCLN antibody (A01246-4).

The sample well of each lane was loaded with 30 ug of sample under reducing conditions.

Lane 1: human HepG2 whole cell lysates,

Lane 2: human 293T whole cell lysates,

Lane 3: human Jurkat whole cell lysates,

Lane 4: rat liver tissue lysates,

Lane 5: mouse liver tissue lysates,

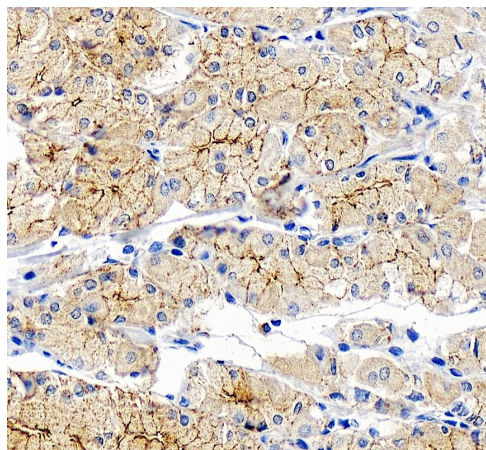
Lane 6: mouse kidney tissue lysates.

After electrophoresis, proteins were transferred to a membrane.

Then the membrane was incubated with rabbit anti-Occludin/OCLN antigen affinity purified polyclonal antibody (A01246-4) and probed

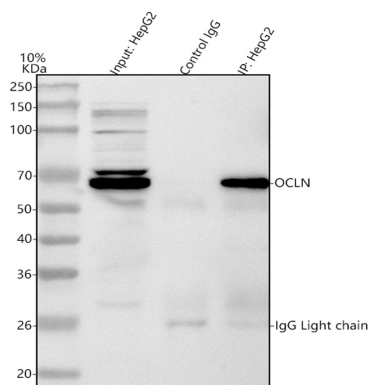
with a goat anti-rabbit IgG-HRP secondary antibody (Catalog # BA1054). The signal is developed using ECL Plus Western Blotting

Substrate (Catalog # AR1197). A specific band was detected for Occludin/OCLN at approximately 59 kDa. The expected band size for Occludin/OCLN is at 59 kDa.



IHC analysis of Occludin/OCN using anti-Occludin/OCN antibody (A01246-4).

Occludin/OCN was detected in a paraffin-embedded section of human stomach tissue. The tissue section was incubated with rabbit anti-Occludin/OCN Antibody (A01246-4) at a dilution of 1:200 and developed using HRP Conjugated Rabbit IgG Super Vision Assay Kit (Catalog # SV0002) with DAB (Catalog # AR1027) as the chromogen.



IP analysis of Occludin/OCN using anti-Occludin/OCN antibody (A01246-4) in HepG2 whole cell lysate.

Western blot analysis of Occludin/OCN using anti- Occludin/OCN antibody (A01246-4).

Lane 1: HepG2 whole cell lysates(30ug),

Lane 2: Rabbit control IgG instead of anti- Occludin/OCN antibody in HepG2 whole cell lysate,

Lane 3: anti- Occludin/OCN antibody (2μg) + HepG2 whole cell lysate (500μg).

After electrophoresis, proteins were transferred to a membrane.

Then the membrane was incubated with rabbit anti- Occludin/OCN antigen affinity purified polyclonal antibody (A01246-4) at a dilution of 1:1000 and probed with a mouse anti-rabbit IgG-HRP secondary antibody (Light Chain Specific). The signal is developed using ECL Plus Western Blotting Substrate (Catalog # AR1197). A specific band was detected for Occludin/OCN at approximately 59 kDa. The expected band size for Occludin/OCN is at 59 kDa.