

Basic Information

Product Name	Anti-Cathepsin D/CTSD Antibody
Gene Name	CTSD
Source	Rabbit
Clonality	Polyclonal
Isotype	IgG
Species Reactivity	mouse, rat
Tested Application	WB, ELISA
Contents	500 ug/ml antibody with PBS, 0.02% NaN ₃ , 1 mg/ml BSA and 50% glycerol.
Immunogen	E. coli-derived mouse Cathepsin D recombinant protein (Position: K161-Q358).
Concentration	500 ug/ml
Purification	Immunogen affinity purified.
Observed MW	28,45 kDa
Dilution Ratios	Western blot (WB):1:500-2000 ELISA: 1:100-1000

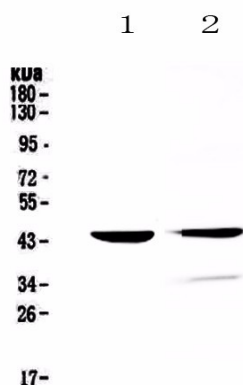
Storage

12 months from date of receipt, -20°C as supplied.

Background Information

Cathepsin D is a protein that in humans is encoded by the CTSD gene. This proteinase is a member of the peptidase C1 family, having a specificity similar to but narrower than that of pepsin A. It is mapped to 11p15.5. The cDNA encodes a 412-amino acid protein with 20 and 44 amino acids in a pre- and prosegment, respectively. Cathepsin D is one of the lysosomal proteinases. It is ubiquitously expressed and is involved in proteolytic degradation, cell invasion, and apoptosis. Mutations in this gene are involved in the pathogenesis of several diseases, including breast cancer and possibly Alzheimer disease and it has been considered as a breast cancer tumor marker.

Selected Validation Data



Western blot analysis of Cathepsin D/CTSD using anti-Cathepsin D/CTSD antibody (A01361). The sample well of each lane was loaded with 30 ug of sample under reducing conditions.

Lane 1: mouse testis tissue lysates,

Lane 2: rat testis tissue lysates.

After electrophoresis, proteins were transferred to a membrane.

Then the membrane was incubated with rabbit anti-Cathepsin D/CTSD antigen affinity purified polyclonal antibody (A01361) at a dilution of 1:1000 and probed with a goat anti-rabbit IgG-HRP

secondary antibody (Catalog # BA1054). The signal is developed using ECL Plus Western Blotting Substrate (Catalog # AR1197). A specific band was detected for Cathepsin D/CTSD at approximately 28,45 kDa. The expected band size for Cathepsin D/CTSD is at 45 kDa.

kDa.