

Basic Information

Product Name	Anti-CD31/PECAM1 Antibody	
Gene Name	Pecam1	
Source	Rabbit	
Clonality	Polyclonal	
Isotype	IgG	
Species Reactivity	mouse, rat	
Tested Application	WB, IHC, ELISA	
Contents	500 ug/ml antibody with PBS, 0.02% NaN ₃ , 1 mg/ml BSA and 50% glycerol.	
Immunogen	E.coli-derived mouse CD31/Pecam1 recombinant protein (Position: Q41-E258).	
Concentration	500 ug/ml	
Purification	Immunogen affinity purified.	
Observed MW	100-120 kDa	
Dilution Ratios	Western blot (WB): 1:500-2000 Immunohistochemistry (IHC): 1:50-400 Enzyme linked immunosorbent assay (ELISA): 1:100-1000 Immunohistochemistry (IHC): 1:50-400 (Boiling the paraffin sections in 10mM citrate buffer,pH6.0,or PH8.0 EDTA repair liquid for 20 mins is required for the staining of formalin/paraffin sections.) Optimal working dilutions must be determined by end user.	

Storage

12 months from date of receipt, -20°C as supplied.

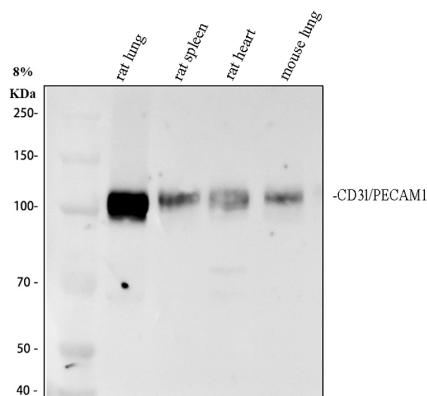
Background Information

CD31 also known as Platelet endothelial cell adhesion molecule (PECAM-1), is a protein that in human is encoded by the PECAM1 gene. Encoded protein is a member of the immunoglobulin superfamily and this gene is mapped to 17q23.3. CD31 is found on the surface of platelets, monocytes, neutrophils, and some types of T-cells, and makes up a large portion of endothelial cell intercellular junctions. It is demonstrated that CD31 expression on human PBSCs may positively affect both neutrophil and platelet engraftment. Meanwhile, CD31 is involved in leukocyte migration and angiogenesis, which are key components of venous thrombus resolution.

Reference

Anti-CD31/PECAM1 Antibody被引用在8文献中。

Selected Validation Data



Western blot analysis of CD31/PECAM1 using anti-CD31/PECAM1 antibody (A01513-2). The sample well of each lane was loaded with 30 ug of sample under reducing conditions.

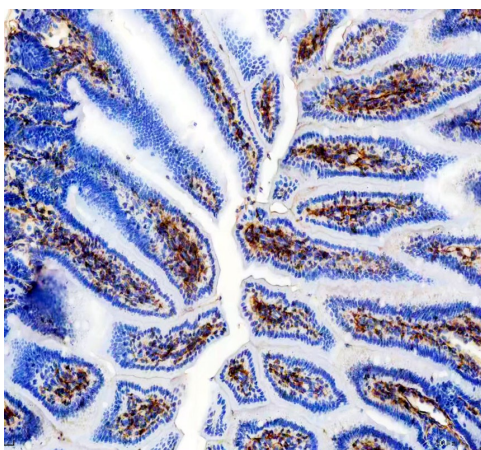
Lane 1: rat lung tissue lysates,

Lane 2: rat spleen tissue lysates,

Lane 3: rat heart tissue lysates,

Lane 4: mouse lung tissue lysates.

After electrophoresis, proteins were transferred to a membrane. Then the membrane was incubated with rabbit anti-CD31/PECAM1 antigen A03957-Aen affinity purified polyclonal antibody (A01513-2) at a dilution of 1:1000 and probed with a goat anti-rabbit IgG-HRP secondary antibody (Catalog # BA1054). The signal is developed using ECL Plus Western Blotting Substrate (Catalog # AR1197). A specific band was detected for CD31/PECAM1 at approximately 100-120 kDa. The expected band size for CD31/PECAM1 is at 83 kDa.



IHC analysis of CD31/PECAM1 using anti-CD31/PECAM1 antibody (A01513-2).

CD31/PECAM1 was detected in a paraffin-embedded section of mouse colon tissue. The tissue section was incubated with rabbit anti-CD31/PECAM1 Antibody (A01513-2) at a dilution of 1:200 and developed using HRP Conjugated Rabbit IgG Super Vision Assay Kit (Catalog # SV0002) with DAB (Catalog # AR1027) as the chromogen.