

Basic Information

Product Name	Anti-SREBF2 Antibody	
Gene Name	SREBF2	
Source	Rabbit	
Clonality	Polyclonal	
Isotype	IgG	
Species Reactivity	human, mouse, rat	
Tested Application	WB, FCM, ELISA	
Contents	500 ug/ml antibody with PBS, 0.02% NaN3, 1 mg/ml BSA and 50% glycerol.	
Immunogen	E.coli-derived human SREBP2/SREBF2 recombinant protein (Position: R371-L409).	
Concentration	500 ug/ml	
Purification	Immunogen affinity purified.	
Observed MW	68 kDa	
Dilution Ratios	Western blot (WB):	1:500-2000
	Flow Cytometry (Fixed):	1:50-200
	Enzyme linked immunosorbent assay (ELISA):	1:100-1000

Storage

12 months from date of receipt, -20°C as supplied.

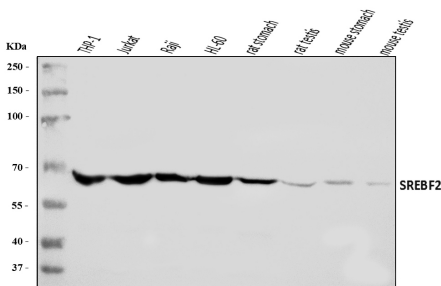
Background Information

Sterol regulatory element-binding protein 2 (SREBP-2) also known as sterol regulatory element binding transcription factor 2 (SREBF2) is a protein that in humans is encoded by the SREBF2 gene. This gene encodes a member of the a ubiquitously expressed transcription factor that controls cholesterol homeostasis by regulating transcription of sterol-regulated genes. The encoded protein contains a basic helix-loop-helix-leucine zipper (bHLH-Zip) domain and binds the sterol regulatory element 1 motif. Alternate splicing results in multiple transcript variants.

Reference

Anti-SREBF2 Antibody被引用在2文献中。

Selected Validation Data



Western blot analysis of SREBF2 using anti-SREBF2 antibody (A01678-2). The sample well of each lane was loaded with 30 ug of sample under reducing conditions.

Lane 1: THP-1 whole cell lysates,

Lane 2: Jurkat whole cell lysates,

Lane 3: Raji whole cell lysates,

Lane 4: HL-60 whole cell lysates,

Lane 5: rat stomach tissue lysates,

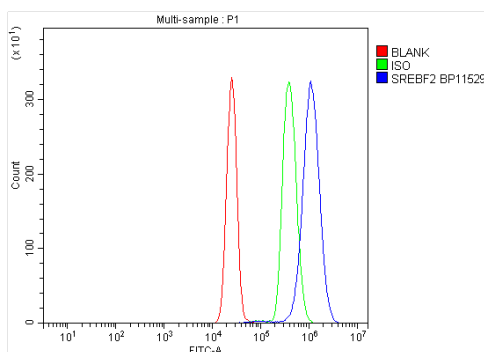
Lane 6: rat testis tissue lysates,

Lane 7: mouse stomach tissue lysates,

Lane 8: mouse testis tissue lysates.

After electrophoresis, proteins were transferred to a membrane.

Then the membrane was incubated with rabbit anti-SREBF2 antigen affinity purified polyclonal antibody (A01678-2) at a dilution of 1:1000 and probed with a goat anti-rabbit IgG-HRP secondary antibody (Catalog # BA1054). The signal is developed using ECL Plus Western Blotting Substrate (Catalog # AR1197). A specific band was detected for SREBF2 at approximately 68 kDa. The expected band size for SREBF2 is at 124 kDa.



Flow Cytometry analysis of K562 cells using anti-SREBF2 antibody (A01678-2).

Overlay histogram showing K562 cells stained with A01678-2 (Blue line). To facilitate intracellular staining, cells were fixed with 4% paraformaldehyde and permeabilized with permeabilization buffer. The cells were blocked with 10% normal goat serum. And then incubated with rabbit anti-SREBF2 Antibody (A01678-2) at 1:100 dilution for 30 min at 20°C. Fluoro488 conjugated goat anti-rabbit IgG (BA1127) was used as secondary antibody at 1:100 dilution for 30 minutes at 20°C. Isotype control antibody (Green line) was rabbit IgG at 1:100 dilution used under the same conditions. Unlabelled

Product datasheet

Anti-SREBF2 Antibody

Catalog Number: **A01678-2**

BOSTER[®]

antibody and ELISA experts

BOSTER BIOLOGICAL TECHNOLOGY

Building C21, 3rd to 5th Floors, Optics Valley Biopharmaceutical Accelerator,
East Lake High-Tech Development Zone, Wuhan.

Web: www.boster.com **Phone:** 027-67845390/1/2 **Email:** boster@boster.com

sample without incubation with primary antibody and secondary antibody (Red line) was used as a blank control.