

Basic Information

Product Name	Anti-Integrin Alpha 6/ITGA6 Antibody	
Gene Name	ITGA6	
Source	Rabbit	
Clonality	Polyclonal	
Isotype	IgG	
Species Reactivity	human, mouse, rat	
Tested Application	WB, FCM, ELISA	
Contents	500 ug/ml antibody with PBS, 0.02% NaN ₃ , 1 mg/ml BSA and 50% glycerol.	
Immunogen	E.coli-derived human Integrin alpha 6/ITGA6 recombinant protein (Position: Q189-K917).	
Concentration	500 ug/ml	
Purification	Immunogen affinity purified.	
Observed MW	127 kDa	
Dilution Ratios	Western blot (WB):	1:500-2000
	Flow Cytometry (Fixed):	1:50-200
	Enzyme linked immunosorbent assay (ELISA):	1:100-1000

Storage

12 months from date of receipt, -20°C as supplied.

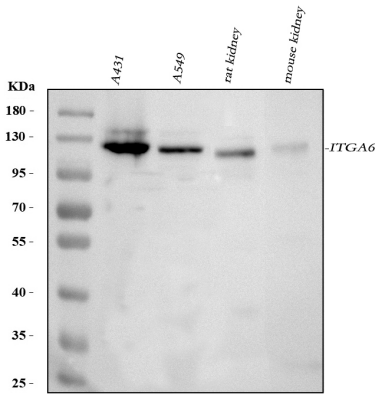
Background Information

Integrin alpha-6, also called VLA-6 or ITGA6B is a protein that in humans is encoded by the ITGA6 gene. This gene is mapped to 2q31.1. The ITGA6 protein product is the integrin alpha chain alpha 6. Integrins are integral cell-surface proteins composed of an alpha chain and a beta chain. A given chain may combine with multiple partners resulting in different integrins. For example, alpha 6 may combine with beta 4 in the integrin referred to as TSP180, or with beta 1 in the integrin VLA-6. Integrins are known to participate in cell adhesion as well as cell-surface mediated signalling. Integrin alpha-6/beta-1 is a receptor for laminin on platelets. Integrin alpha-6/beta-4 is a receptor for laminin in epithelial cells and it plays a critical structural role in the hemidesmosome.

Reference

Anti-Integrin Alpha 6/ITGA6 Antibody被引用在2文献中。

Selected Validation Data



Western blot analysis of anti-Integrin Alpha 6/ITGA6 antibody (A01693). The sample well of each lane was loaded with 30 ug of sample under reducing conditions.

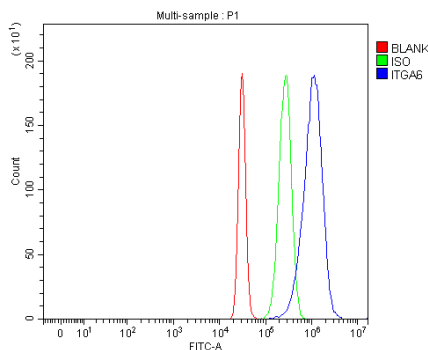
Lane 1: human A431 whole cell lysates,

Lane 2: human A549 whole cell lysates,

Lane 3: rat kidney tissue lysates,

Lane 4: mouse kidney tissue lysates.

After electrophoresis, proteins were transferred to a membrane. Then the membrane was incubated with rabbit anti-Integrin Alpha 6/ITGA6 antigen affinity purified polyclonal antibody (A01693) and probed with a goat anti-rabbit IgG-HRP secondary antibody (Catalog # BA1054). The signal is developed using ECL Plus Western Blotting Substrate (Catalog # AR1197). A specific band was detected for Integrin Alpha 6/ITGA6 at approximately 127 kDa. The expected band size for Integrin Alpha 6/ITGA6 is at 127 kDa.



Flow Cytometry analysis of HepG2 cells using anti-Integrin Alpha 6/ITGA6 antibody (A01693).

Overlay histogram showing HepG2 cells stained with A01693 (Blue line). The cells were fixed with 4% paraformaldehyde and blocked with 10% normal goat serum. And then incubated with rabbit anti-Integrin Alpha 6/ITGA6 Antibody (A01693, 1:100). DyLight®488 conjugated goat anti-rabbit IgG (BA1127, 1:100) was used as secondary antibody. Isotype control antibody (Green line) was rabbit IgG (Catalog # BA1045) (1:100) used under the same conditions. Unlabelled sample (Red line) was also used as a control.