

Basic Information

Product Name	Anti-CKM/CKB Antibody	
Gene Name	CKB	
Source	Rabbit	
Clonality	Polyclonal	
Isotype	IgG	
Species Reactivity	human, mouse, rat	
Tested Application	WB, IHC, ELISA	
Contents	500 ug/ml antibody with PBS, 0.02% NaN ₃ , 1 mg/ml BSA and 50% glycerol.	
Immunogen	E. coli-derived human CKB recombinant protein (Position: H7-K381).	
Concentration	500 ug/ml	
Purification	Immunogen affinity purified.	
Observed MW	43 kDa	
Dilution Ratios	Western blot (WB): 1:500-2000 Immunohistochemistry (IHC): 1:50-400 ELISA: 1:100-1000 (Boiling the paraffin sections in 10mM citrate buffer, pH6.0, or PH8.0 EDTA repair liquid for 20 mins is required for the staining of formalin/paraffin sections.) Optimal working dilutions must be determined by end user.	

Storage

12 months from date of receipt, -20°C as supplied.

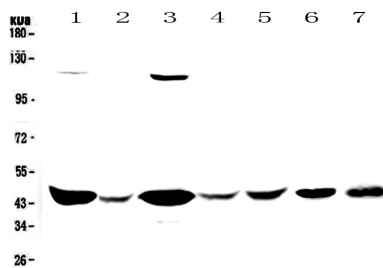
Background Information

Brain-type creatine kinase also known as CK-BB is a creatine kinase that in humans is encoded by the CKB gene. The protein encoded by this gene is a cytoplasmic enzyme involved in energy homeostasis. The encoded protein reversibly catalyzes the transfer of phosphate between ATP and various phosphagens such as creatine phosphate. It acts as a homodimer in brain as well as in other tissues, and as a heterodimer with a similar muscle isozyme in heart. The encoded protein is a member of the ATP:guanido phosphotransferase protein family. A pseudogene of this gene has been characterized.

Reference

Anti-CKM/CKB Antibody 被引用在2文献中。

Selected Validation Data



Western blot analysis of CKM/CKB using anti-CKM/CKB antibody (A01695-1). The sample well of each lane was loaded with 30 ug of sample under reducing conditions.

Lane 1: human Hela whole cell lysates,

Lane 2: human placenta tissue lysates,

Lane 3: human COLO-320 whole cell lysates,

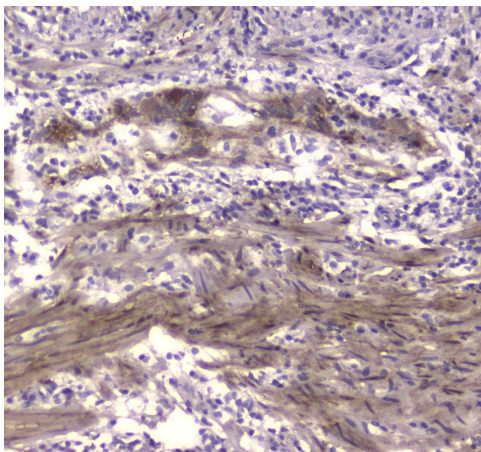
Lane 4: human SW620 whole cell lysates,

Lane 5: human MDA-MB-231 whole cell lysates,

Lane 6: rat brain tissue lysates,

Lane 7: mouse brain tissue lysates.

After electrophoresis, proteins were transferred to a membrane. Then the membrane was incubated with rabbit anti-CKM/CKB antigen affinity purified polyclonal antibody (A01695-1) at a dilution of 1:1000 and probed with a goat anti-rabbit IgG-HRP secondary antibody (Catalog # BA1054). The signal is developed using ECL Plus Western Blotting Substrate (Catalog # AR1197). A specific band was detected for CKM/CKB at approximately 43 kDa. The expected band size for CKM/CKB is at 43 kDa.



IHC analysis of CKM/CKB using anti-CKM/CKB antibody (A01695-1). CKM/CKB was detected in a paraffin-embedded section of human colon cancer tissue. Biotinylated goat anti-rabbit IgG was used as secondary antibody. The tissue section was incubated with rabbit anti-CKM/CKB Antibody (A01695-1) at a dilution of 1:200 and developed using Streptavidin-Biotin-Complex (SABC) (Catalog # SA1022) with DAB (Catalog # AR1027) as the chromogen.