

## Basic Information

<b>Product Name</b>	Anti-FGF10 Antibody
<b>Gene Name</b>	FGF10
<b>Source</b>	Rabbit
<b>Clonality</b>	Polyclonal
<b>Isotype</b>	IgG
<b>Species Reactivity</b>	human, mouse, rat
<b>Tested Application</b>	WB, ICC/IF, FCM, ELISA
<b>Contents</b>	500 ug/ml antibody with PBS, 0.02% NaN3, 1 mg/ml BSA and 50% glycerol.
<b>Immunogen</b>	E.coli-derived human FGF10 recombinant protein (Position: Q38-S208).
<b>Concentration</b>	500 ug/ml
<b>Purification</b>	Immunogen affinity purified.
<b>Observed MW</b>	20 kDa
<b>Dilution Ratios</b>	Western blot (WB): 1:500-2000 Immunocytochemistry/Immunofluorescence (ICC/IF):1:50-400 Flow Cytometry (Fixed): 1:50-200 Enzyme linked immunosorbent assay (ELISA): 1:100-1000

## Storage

12 months from date of receipt, -20°C as supplied.

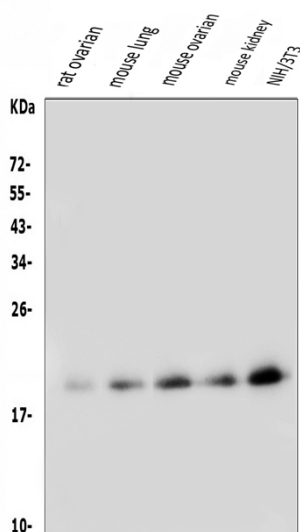
## Background Information

Fibroblast growth factor 10 is a protein that in humans is encoded by the FGF10 gene. It is mapped to 5p12. The protein encoded by this gene is a member of the fibroblast growth factor (FGF) family. FGF family members possess broad mitogenic and cell survival activities, and are involved in a variety of biological processes, including embryonic development, cell growth, morphogenesis, tissue repair, tumor growth and invasion. This protein exhibits mitogenic activity for keratinizing epidermal cells, but essentially no activity for fibroblasts, which is similar to the biological activity of FGF7. Studies of the mouse homolog of suggested that this gene is required for embryonic epidermal morphogenesis including brain development, lung morphogenesis, and initiation of limb bud formation. This gene is also implicated to be a primary factor in the process of wound healing.

## Reference

Anti-FGF10 Antibody被引用在2文献中。

## Selected Validation Data



Western blot analysis of FGF10 using anti-FGF10 antibody (A01709). The sample well of each lane was loaded with 30 ug of sample under reducing conditions.

Lane 1: Rat ovarian tissue lysates,

Lane 2: Mouse lung tissue lysates,

Lane 3: Mouse ovarian tissue lysates,

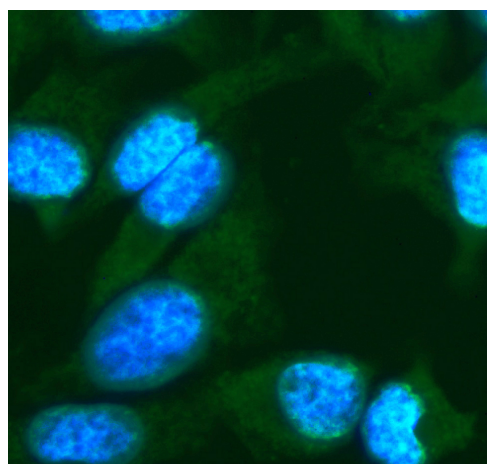
Lane 4: Mouse kidney tissue lysates,

Lane 5: Mouse NIH/3T3 whole cell lysates.

After electrophoresis, proteins were transferred to a membrane.

Then the membrane was incubated with rabbit anti-FGF10 antigen affinity purified polyclonal antibody (A01709) at a dilution of 1:1000 and probed with a goat anti-rabbit IgG-HRP secondary antibody (Catalog # BA1054). The signal is developed using ECL Plus Western Blotting Substrate (Catalog # AR1197). A specific band was detected for FGF10 at approximately 20 kDa. The expected band size for FGF10 is at 23 kDa.

Then the membrane was incubated with rabbit anti-FGF10 antigen affinity purified polyclonal antibody (A01709) at a dilution of 1:1000 and probed with a goat anti-rabbit IgG-HRP secondary antibody (Catalog # BA1054). The signal is developed using ECL Plus Western Blotting Substrate (Catalog # AR1197). A specific band was detected for FGF10 at approximately 20 kDa. The expected band size for FGF10 is at 23 kDa.



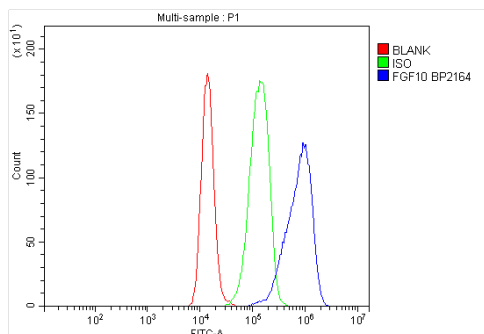
ICC/IF analysis of FGF10 using anti-FGF10 antibody (A01709).

FGF10 was detected in an immunocytochemical section of HeLa cells.

The section was incubated with rabbit anti-FGF10 Antibody (A01709)

at a dilution of 1:100. Fluoro488 Conjugated Goat Anti-Rabbit IgG (Green) (Catalog # BA1127) was used as secondary antibody. The section was counterstained with DAPI (Catalog # AR1176) (Blue).

The section was counterstained with DAPI (Catalog # AR1176) (Blue).



Flow Cytometry analysis of Jurkat cells using anti-FGF10 antibody (A01709).

Overlay histogram showing Jurkat cells stained with A01709 (Blue line). To facilitate intracellular staining, cells were fixed with 4% paraformaldehyde and permeabilized with permeabilization buffer. The cells were blocked with 10% normal goat serum. And then incubated with rabbit anti-FGF10 Antibody (A01709) at 1:100 dilution for 30 min at 20°C. Fluoro488 conjugated goat anti-rabbit IgG (BA1127) was used as secondary antibody at 1:100 dilution for 30 minutes at 20°C. Isotype control antibody (Green line) was rabbit IgG at 1:100 dilution used under the same conditions. Unlabelled sample without incubation with primary antibody and secondary antibody (Red line) was used as a blank control.