

Basic Information

Product Name	Anti-CD2AP Antibody	
Gene Name	CD2AP	
Source	Rabbit	
Clonality	Polyclonal	
Isotype	IgG	
Species Reactivity	human, mouse, rat	
Tested Application	WB, IHC, ICC/IF, IP, FCM, ELISA	
Contents	500 ug/ml antibody with PBS, 0.02% NaN ₃ , 1 mg/ml BSA and 50% glycerol.	
Immunogen	E. coli-derived human CD2AP recombinant protein (Position: K253-K337).	
Concentration	500 ug/ml	
Purification	Immunogen affinity purified.	
Observed MW	80 kDa	
Dilution Ratios	Western blot (WB):	1:500-2000
	Immunohistochemistry (IHC):	1:50-400
	Immunocytochemistry/Immunofluorescence (ICC/IF):	1:50-400
	ImmunoPrecipitation (IP):	1:50
	Flow Cytometry (Fixed):	1:50-200
	Enzyme linked immunosorbent assay (ELISA):	1:100-1000
	(Boiling the paraffin sections in 10mM citrate buffer,pH6.0,or PH8.0 EDTA repair liquid for 20 mins is required for the staining of formalin/paraffin sections.) Optimal working dilutions must be determined by end user.	

Storage

12 months from date of receipt, -20°C as supplied.

Background Information

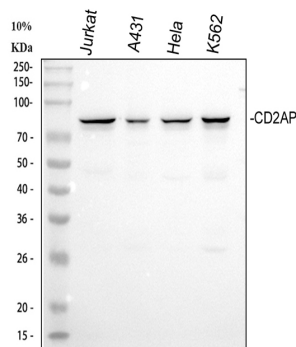
CD2-associated protein is a protein that in humans is encoded by the CD2AP gene. This gene encodes a scaffolding molecule that regulates the actin cytoskeleton. The protein directly interacts with filamentous actin and a variety of cell membrane proteins through multiple actin binding sites, SH3 domains, and a proline-rich region containing binding sites for SH3 domains. The cytoplasmic protein localizes to membrane ruffles, lipid rafts, and the leading edges of cells. It is implicated in dynamic actin remodeling and membrane trafficking that occurs during receptor endocytosis and

cytokinesis. Haploinsufficiency of this gene is implicated in susceptibility to glomerular disease.

Reference

Anti-CD2AP Antibody 被引用在1文献中。

Selected Validation Data



Western blot analysis of CD2AP using anti-CD2AP antibody (A01756-2). The sample well of each lane was loaded with 30 ug of sample under reducing conditions.

Lane 1: human Jurkat whole cell lysates,

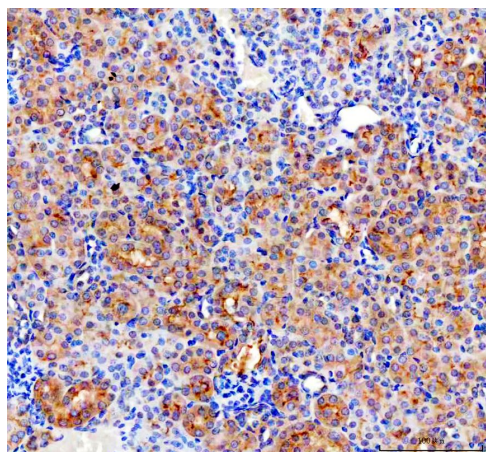
Lane 2: human A431 whole cell lysates,

Lane 3: human HeLa whole cell lysates,

Lane 4: human K562 whole cell lysates.

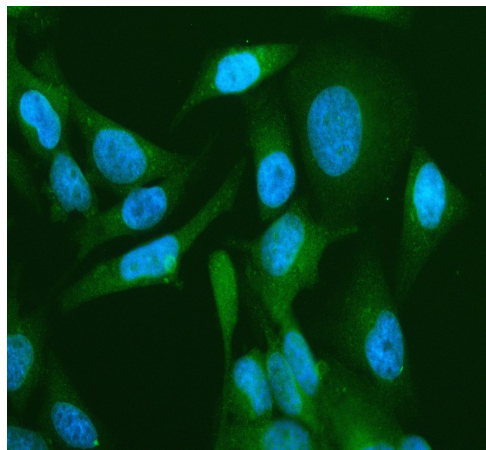
After electrophoresis, proteins were transferred to a membrane.

Then the membrane was incubated with rabbit anti-CD2AP antigen affinity purified polyclonal antibody (A01756-2) at a dilution of 1:1000 and probed with a goat anti-rabbit IgG-HRP secondary antibody (Catalog # BA1054). The signal is developed using ECL Plus Western Blotting Substrate (Catalog # AR1197). A specific band was detected for CD2AP at approximately 80 kDa. The expected band size for CD2AP is at 71 kDa.

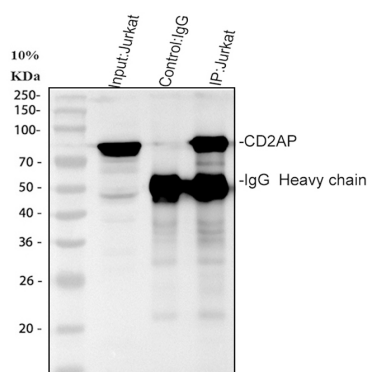


IHC analysis of CD2AP using anti-CD2AP antibody (A01756-2).

CD2AP was detected in a paraffin-embedded section of mouse kidney tissue. The tissue section was incubated with rabbit anti-CD2AP Antibody (A01756-2) at a dilution of 1:200 and developed using HRP Conjugated Rabbit IgG Super Vision Assay Kit (Catalog # SV0002) with DAB (Catalog # AR1027) as the chromogen.



ICC/IF analysis of CD2AP using anti-CD2AP antibody (A01756-2). CD2AP was detected in an immunocytochemical section of HeLa cells. The section was incubated with rabbit anti-CD2AP Antibody (A01756-2) at a dilution of 1:100. Fluoro488 Conjugated Goat Anti-Rabbit IgG (Green) (Catalog # BA1127) was used as secondary antibody. The section was counterstained with DAPI (Catalog # AR1176) (Blue).



IP analysis of CD2AP using anti-CD2AP antibody (A01756-2) in Jurkat whole cell lysate.

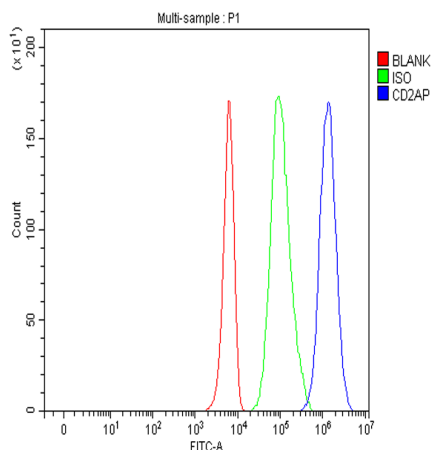
Western blot analysis of CD2AP using anti- CD2AP antibody (A01756-2).

Lane 1: Jurkat whole cell lysates(30ug),

Lane 2: Rabbit control IgG instead of anti- CD2AP antibody in Jurkat whole cell lysate,

Lane 3: anti- CD2AP antibody (2μg) + Jurkat whole cell lysate (500μg).

After electrophoresis, proteins were transferred to a membrane. Then the membrane was incubated with rabbit anti- CD2AP antigen affinity purified polyclonal antibody (A01756-2) at a dilution of 1:1000 and probed with a goat anti-rabbit IgG-HRP secondary antibody (Catalog # BA1054). The signal is developed using ECL Plus Western Blotting Substrate (Catalog # AR1197). A specific band was detected for CD2AP at approximately 80 kDa. The expected band size for CD2AP is at 71 kDa.



Flow Cytometry analysis of K562 cells using anti-CD2AP antibody (A01756-2).

Overlay histogram showing K562 cells stained with A01756-2 (Blue line). To facilitate intracellular staining, cells were fixed with 4% paraformaldehyde and permeabilized with permeabilization buffer. The cells were blocked with 10% normal goat serum. And then incubated with rabbit anti-CD2AP Antibody (A01756-2) at 1:100 dilution for 30 min at 20°C. Fluoro488 conjugated goat anti-rabbit IgG (BA1127) was used as secondary antibody at 1:100 dilution for 30 minutes at 20°C. Isotype control antibody (Green line) was rabbit IgG at 1:100 dilution used under the same conditions. Unlabelled sample without incubation with primary antibody and secondary antibody (Red line) was used as a blank control.