

## Basic Information

<b>Product Name</b>	Anti-PNPLA2 Antibody	
<b>Gene Name</b>	PNPLA2	
<b>Source</b>	Rabbit	
<b>Clonality</b>	Polyclonal	
<b>Isotype</b>	IgG	
<b>Species Reactivity</b>	human, mouse, rat	
<b>Tested Application</b>	WB, IHC, FCM	
<b>Contents</b>	500 ug/ml antibody with PBS, 0.02% NaN3, 1 mg/ml BSA and 50% glycerol.	
<b>Immunogen</b>	A synthetic peptide corresponding to a sequence at the C-terminus of human PNPLA2.	
<b>Concentration</b>	500 ug/ml	
<b>Purification</b>	Immunogen affinity purified.	
<b>Observed MW</b>	50 kDa	
<b>Dilution Ratios</b>	Western blot (WB):	1:500-2000
	Immunohistochemistry (IHC):	1:50-400
	Flow Cytometry (Fixed):	1:50-200
	(Boiling the paraffin sections in 10mM citrate buffer,pH6.0,or PH8.0 EDTA repair liquid for 20 mins is required for the staining of formalin/paraffin sections.) Optimal working dilutions must be determined by end user.	

## Storage

12 months from date of receipt, -20°C as supplied. 6 months 2 to 8°C after reconstitution. Avoid repeated freezing and thawing.

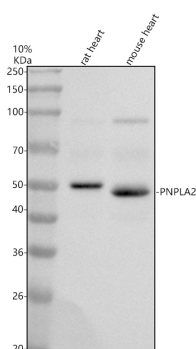
## Background Information

This gene encodes an enzyme which catalyzes the first step in the hydrolysis of triglycerides in adipose tissue. Mutations in this gene are associated with neutral lipid storage disease with myopathy.

## Reference

Anti-PNPLA2 Antibody被引用在1文献中。

## Selected Validation Data

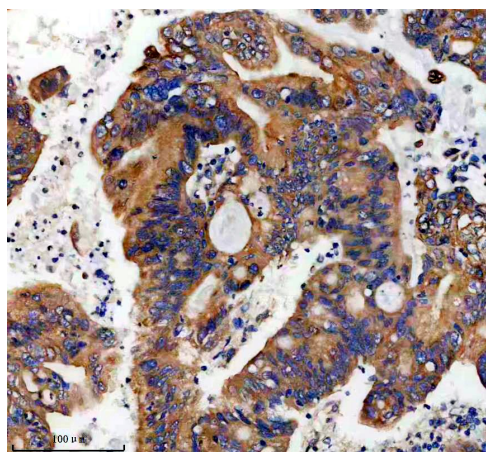


Western blot analysis of PNPLA2 using anti-PNPLA2 antibody (A01800-1). The sample well of each lane was loaded with 30 ug of sample under reducing conditions.

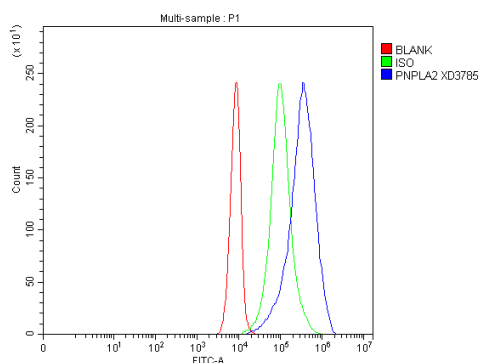
Lane 1: rat heart tissue lysates,

Lane 2: mouse heart tissue lysates.

After electrophoresis, proteins were transferred to a membrane. Then the membrane was incubated with rabbit anti-PNPLA2 antigen affinity purified polyclonal antibody (A01800-1) at a dilution of 1:1000 and probed with a goat anti-rabbit IgG-HRP secondary antibody (Catalog # BA1054). The signal is developed using ECL Plus Western Blotting Substrate (Catalog # AR1197). A specific band was detected for PNPLA2 at approximately 50 kDa. The expected band size for PNPLA2 is at 55 kDa.



IHC analysis of PNPLA2 using anti-PNPLA2 antibody (A01800-1). PNPLA2 was detected in a paraffin-embedded section of human colon cancer tissue. The tissue section was incubated with rabbit anti-PNPLA2 Antibody (A01800-1) at a dilution of 1:200 and developed using HRP Conjugated Rabbit IgG Super Vision Assay Kit (Catalog # SV0002) with DAB (Catalog # AR1027) as the chromogen.



Flow Cytometry analysis of A431 cells using anti-PNPLA2 antibody (A01800-1).

Overlay histogram showing A431 cells stained with A01800-1 (Blue line). The cells were fixed with 4% paraformaldehyde and blocked with 10% normal goat serum. And then incubated with rabbit anti-PNPLA2 Antibody (A01800-1) at 1:100 dilution for 30 min at 20°C. Fluoro488 conjugated goat anti-rabbit IgG (BA1127) was used as secondary antibody at 1:100 dilution for 30 minutes at 20°C. Isotype control antibody (Green line) was rabbit IgG at 1:100 dilution used under the same conditions. Unlabelled sample without incubation with primary antibody and secondary antibody (Red line) was used as a blank control.