

## Basic Information

Product Name	Anti-BMP15 Antibody	
Gene Name	BMP15	
Source	Rabbit	
Clonality	Polyclonal	
Isotype	IgG	
Species Reactivity	human, mouse, rat	
Tested Application	WB, IHC	
Contents	500 ug/ml antibody with PBS, 0.02% NaN <sub>3</sub> , 1 mg/ml BSA and 50% glycerol.	
Immunogen	A synthetic peptide corresponding to a sequence at the C-terminus of human BMP15, which shares 70% and 66.7% amino acid (aa) sequence identity with mouse and rat BMP15, respectively.	
Concentration	500 ug/ml	
Purification	Immunogen affinity purified.	
Observed MW	45 kDa	
Dilution Ratios	Western blot (WB): 1:500-2000 Immunohistochemistry (IHC): 1:50-400 (Boiling the paraffin sections in 10mM citrate buffer, pH6.0, or PH8.0 EDTA repair liquid for 20 mins is required for the staining of formalin/paraffin sections.) Optimal working dilutions must be determined by end user.	

## Storage

12 months from date of receipt, -20°C as supplied.

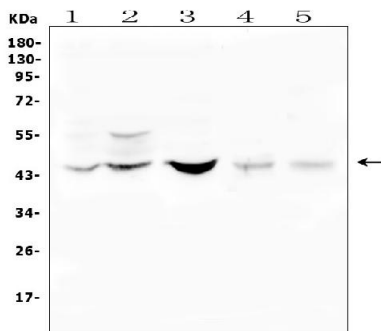
## Background Information

Bone morphogenetic protein 15 is a protein that in humans is encoded by the BMP15 gene. It is mapped to Xp11.22. It's mainly involved in folliculogenesis. The protein encoded by this gene is a member of the bone morphogenetic protein family which is part of the transforming growth factor-beta superfamily. The transforming growth factor-beta superfamily includes large families of growth and differentiation factors. It is thought that this protein may be involved in oocyte maturation and follicular development as a homodimer or by forming heterodimers with a related protein, Gdf9. Defects in this gene are the cause of ovarian dysgenesis 2.

## Reference

Anti-BMP15 Antibody被引用在1文献中。

## Selected Validation Data



Western blot analysis of BMP15 using anti-BMP15 antibody (A01842). The sample well of each lane was loaded with 30 ug of sample under reducing conditions.

Lane 1: human Hela whole cell lysates,

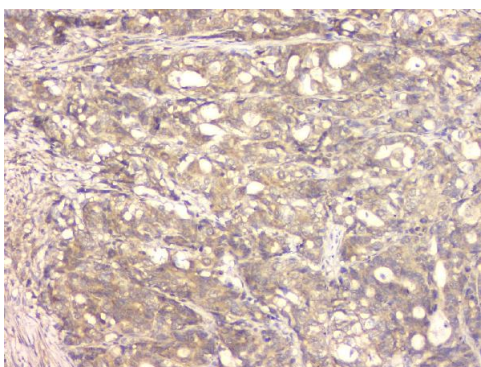
Lane 2: human placenta tissue lysates,

Lane 3: human Caco-2 whole cell lysates,

Lane 4: rat lung tissue lysates,

Lane 5: mouse lung tissue lysates.

After electrophoresis, proteins were transferred to a membrane. Then the membrane was incubated with rabbit anti-BMP15 antigen affinity purified polyclonal antibody (A01842) at a dilution of 1:1000 and probed with a goat anti-rabbit IgG-HRP secondary antibody (Catalog # BA1054). The signal is developed using ECL Plus Western Blotting Substrate (Catalog # AR1197). A specific band was detected for BMP15 at approximately 45 kDa. The expected band size for BMP15 is at 45 kDa.



IHC analysis of BMP15 using anti-BMP15 antibody (A01842).

BMP15 was detected in a paraffin-embedded section of human gastric cancer tissue. Biotinylated goat anti-rabbit IgG was used as secondary antibody. The tissue section was incubated with rabbit anti-BMP15 Antibody (A01842) at a dilution of 1:200 and developed using Streptavidin-Biotin-Complex (SABC) (Catalog # SA1022) with DAB (Catalog # AR1027) as the chromogen.