

Basic Information

Product Name	Anti-C5AR1 Antibody		
Gene Name	C5AR1		
Source	Rabbit		
Clonality	Polyclonal		
Isotype	IgG		
Species Reactivity	mouse		
Tested Application	WB, ICC/IF, FCM, ELISA		
Contents	500 ug/ml antibody with PBS, 0.02% NaN ₃ , 1 mg/ml BSA and 50% glycerol.		
Immunogen	E. coli-derived mouse C5a-R/C5ar1 recombinant protein (Position: H29-D327). Mouse C5a-R/C5ar1 shares 70.8% and 81.6% amino acid (aa) sequence identity with human and rat C5a-R/C5ar1, respectively.		
Concentration	500 ug/ml		
Purification	Immunogen affinity purified.		
Observed MW	43 kDa		
Dilution Ratios	Western blot (WB):	1:500-2000	
	Immunocytochemistry/Immunofluorescence (ICC/IF):	1:50-400	
	Flow Cytometry (Fixed):	1:50-200	
	Enzyme linked immunosorbent assay (ELISA):	1:100-1000	

Storage

12 months from date of receipt, -20°C as supplied.

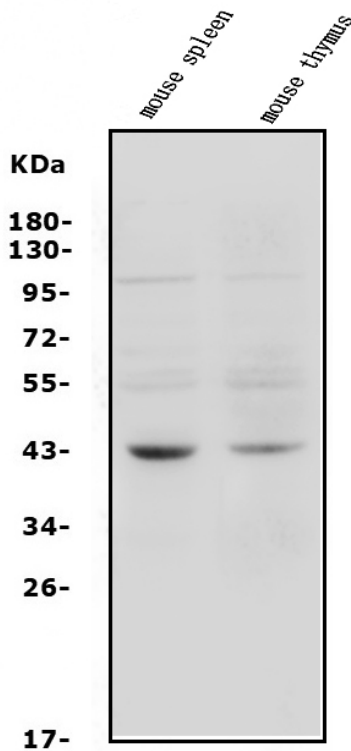
Background Information

The C5a receptor also known as complement component 5a receptor 1 (C5AR1) or CD88 (Cluster of Differentiation 88) is a G protein-coupled receptor for C5a. It functions as a complement receptor. C5a receptor modulates inflammatory responses, obesity, development and cancers.

Reference

Anti-C5AR1 Antibody被引用在3文献中。

Selected Validation Data



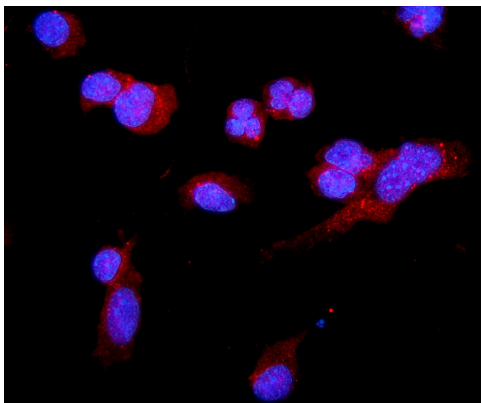
Western blot analysis of C5AR1 using anti-C5AR1 antibody (A01898-2).

The sample well of each lane was loaded with 30 ug of sample under reducing conditions.

Lane 1: Mouse spleen tissue lysates,

Lane 2: Mouse thymus tissue lysates.

After electrophoresis, proteins were transferred to a membrane. Then the membrane was incubated with rabbit anti-C5AR1 antigen affinity purified polyclonal antibody (A01898-2) at a dilution of 1:1000 and probed with a goat anti-rabbit IgG-HRP secondary antibody (Catalog # BA1054). The signal is developed using ECL Plus Western Blotting Substrate (Catalog # AR1197). A specific band was detected for C5AR1 at approximately 43 kDa. The expected band size for C5AR1 is at 43 kDa.

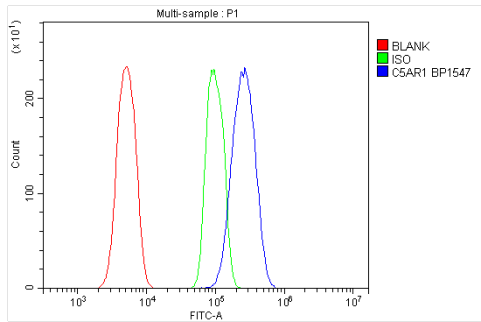


IF analysis of C5AR1 using anti-C5AR1 antibody (A01898-2).

C5AR1 was detected in an immunocytochemical section of Hepa1-6 cells.

The section was incubated with rabbit anti-C5AR1 Antibody (A01898-2) at a dilution of 1:100. DyLight550-conjugated Anti-rabbit IgG Secondary Antibody (red)(Catalog#BA1135) was used as secondary antibody. The

section was counterstained with DAPI (Catalog # AR1176) (Blue).



Flow Cytometry analysis of Raw264.7 cells using anti-C5AR1 antibody (A01898-2).

Overlay histogram showing Raw264.7 cells stained with A01898-2 (Blue line). The cells were fixed with 4% paraformaldehyde and blocked with 10% normal goat serum. And then incubated with rabbit anti-C5AR1 Antibody (A01898-2) at 1:100 dilution for 30 min at 20°C. DyLight®488 conjugated goat anti-rabbit IgG (BA1127) was used as secondary antibody at 1:100 dilution for 30 minutes at 20°C. Isotype control antibody (Green line) was rabbit IgG at 1:100 dilution used under the same conditions. Unlabelled sample without incubation with primary antibody and secondary antibody (Red line) was used as a blank control.