

Basic Information

Product Name	Anti-PROX1 Antibody	
Gene Name	PROX1	
Source	Rabbit	
Clonality	Polyclonal	
Isotype	IgG	
Species Reactivity	human, mouse, rat	
Tested Application	WB, ICC/IF, IP, FCM, ELISA	
Contents	500 ug/ml antibody with PBS, 0.02% NaN ₃ , 1 mg/ml BSA and 50% glycerol.	
Immunogen	E.coli-derived human PROX1 recombinant protein (Position: E51-E737).	
Concentration	500 ug/ml	
Purification	Immunogen affinity purified.	
Observed MW	90 kDa	
Dilution Ratios	Western blot (WB):	1:500-2000
	Immunocytochemistry/Immunofluorescence (ICC/IF):	1:50-400
	ImmunoPrecipitation (IP):	1:250-300
	Flow Cytometry (Fixed):	1:50-200
	Enzyme linked immunosorbent assay (ELISA):	1:100-1000

Storage

12 months from date of receipt, -20°C as supplied.

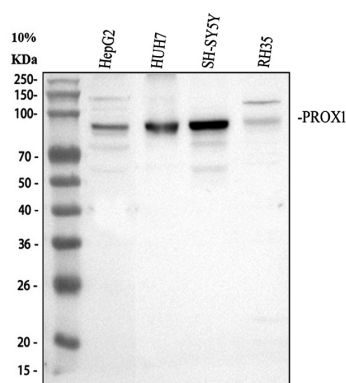
Background Information

Prospero homeobox protein 1, also called PROX1 is a protein that in humans is encoded by the PROX1 gene. This gene is mapped to 1q32.3. The protein encoded by this gene is a member of the homeobox transcription factor family. Members of this family contain a homeobox domain that consists of a 60-amino acid helix-turn-helix structure that binds DNA and RNA. The protein encoded by this gene is conserved across vertebrates and may play an essential role during development. Altered levels of this protein have been reported in cancers of different organs, such as colon, brain, blood, breast, pancreas, liver and esophagus.

Reference

Anti-PROX1 Antibody被引用在4文献中。

Selected Validation Data



Western blot analysis of PROX1 using anti-PROX1 antibody

(A01985-1). The sample well of each lane was loaded with 30 ug of sample under reducing conditions.

Lane 1: human HepG2 whole cell lysates,

Lane 2: human HUH7 whole cell lysates,

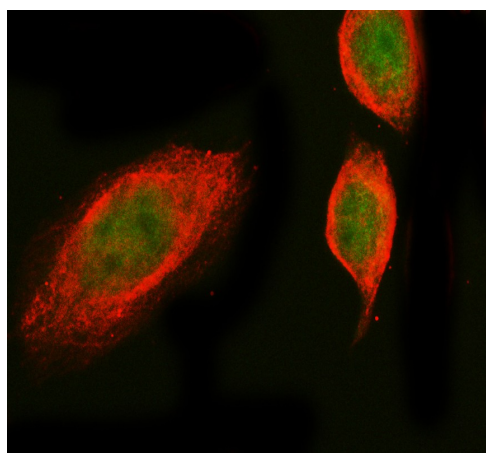
Lane 3: human SH-SY5Y whole cell lysates,

Lane 4: rat RH-35 whole cell lysates.

After electrophoresis, proteins were transferred to a membrane.

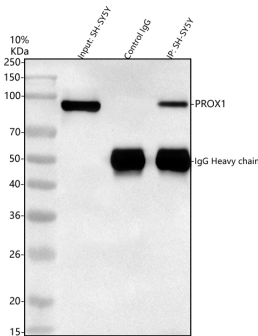
Then the membrane was incubated with rabbit anti-PROX1 antigen affinity purified polyclonal antibody (A01985-1) at a dilution of 1:1000 and probed with a goat anti-rabbit IgG-HRP secondary antibody (Catalog # BA1054). The signal is developed using ECL Plus Western Blotting Substrate (Catalog # AR1197). A specific band was detected for PROX1 at approximately 90 kDa. The expected band size for PROX1 is at 83 kDa.

The signal is developed using ECL Plus Western Blotting Substrate (Catalog # AR1197). A specific band was detected for PROX1 at approximately 90 kDa. The expected band size for PROX1 is at 83 kDa.



ICC/IF analysis of PROX1 using anti-PROX1 antibody (A01985-1) and anti-Beta Tubulin antibody (M01857-3).

PROX1 was detected in an immunocytochemical section of SiHa cells. The section was incubated with rabbit anti-PROX1 Antibody (A01985-1) at a dilution of 1:100. Fluoro488-conjugated Anti-rabbit IgG Secondary Antibody (green) (Catalog # BA1127) and Fluoro594-conjugated Anti-mouse IgG Secondary Antibody (red) (Catalog # BA1141) were used as secondary antibody.



IP analysis of PROX1 using anti-PROX1 antibody (A01985-1) in SH-SY5Y whole cell lysate.

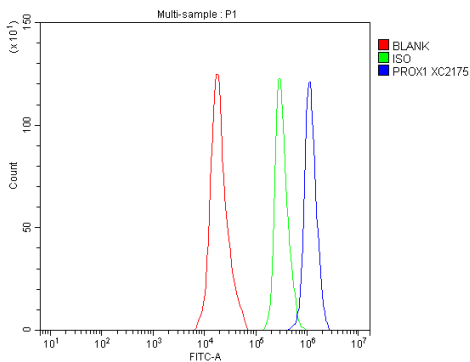
Western blot analysis of PROX1 using anti- PROX1 antibody (A01985-1).

Lane 1: SH-SY5Y whole cell lysates(30ug),

Lane 2: Rabbit control IgG instead of anti- PROX1 antibody in SH-SY5Y whole cell lysate,

Lane 3: anti- PROX1 antibody (2μg) + SH-SY5Y whole cell lysate (500μg).

After electrophoresis, proteins were transferred to a membrane. Then the membrane was incubated with rabbit anti- PROX1 antigen affinity purified polyclonal antibody (A01985-1) at a dilution of 1:1000 and probed with a goat anti-rabbit IgG-HRP secondary antibody (Catalog # BA1054). The signal is developed using ECL Plus Western Blotting Substrate (Catalog # AR1197). A specific band was detected for PROX1 at approximately 90 kDa. The expected band size for PROX1 is at 83 kDa.



Flow Cytometry analysis of SH-SY5Y cells using anti-PROX1 antibody (A01985-1).

Overlay histogram showing SH-SY5Y cells stained with A01985-1 (Blue line). To facilitate intracellular staining, cells were fixed with 4% paraformaldehyde and permeabilized with permeabilization buffer. The cells were blocked with 10% normal goat serum. And then incubated with rabbit anti-PROX1 Antibody (A01985-1) at 1:100 dilution for 30 min at 20°C. Fluoro488 conjugated goat anti-rabbit IgG (BA1127) was used as secondary antibody at 1:100 dilution for 30 minutes at 20°C. Isotype control antibody (Green line) was rabbit IgG at 1:100 dilution used under the same conditions. Unlabelled sample without incubation with primary antibody and secondary antibody (Red line) was used as a blank control.