

Basic Information

| | |
|---------------------------|--|
| Product Name | Anti-Prosurfactant Protein C/SFTPC Antibody |
| Gene Name | Sftpc |
| Source | Rabbit |
| Clonality | Polyclonal |
| Isotype | IgG |
| Species Reactivity | mouse, rat |
| Tested Application | WB, ELISA |
| Contents | 500 ug/ml antibody with PBS, 0.02% NaN3, 1 mg/ml BSA and 50% glycerol. |
| Immunogen | E.coli-derived mouse Prosurfactant Protein C/SFTPC recombinant protein (Position: S98-1193). |
| Concentration | 500 ug/ml |
| Purification | Immunogen affinity purified. |
| Observed MW | 21 kDa |
| Dilution Ratios | Western blot (WB): 1:500-2000 Enzyme linked immunosorbent assay (ELISA):1:100-1000 |

Storage

12 months from date of receipt, -20°C as supplied.

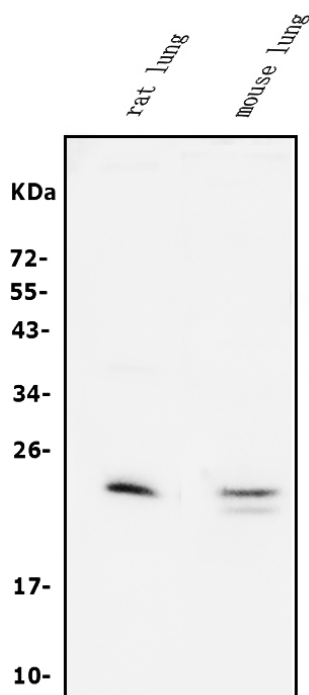
Background Information

SFTPC(Surfactant pulmonary -associated protein C), also known as SFTP2, SPC, PSP-C or PULMONARY SURFACTANT PROTEIN SP5, is a protein that in humans is encoded by the SFTPC gene. It is a membrane protein which manufactures surfactant. Glasser et al.(1988) assigned the SFTPC gene, symbolized SFTP2 by the Human Gene Mapping nomenclature committee, to chromosome 8 by hybridization to somatic cell hybrid DNA. Wood et al.(1994) identified 4 cosmids at the SFTP2 locus by cDNA hybridization. Using a polymorphic CA repeat in the SFTP2 gene and linkage analysis in 8 CEPH families, they located the gene close to D8S298; maximum lod = 19.3 at theta = 0.01. They regionalized the gene to 8p21 by fluorescence in situ hybridization. Moore et al.(1992) showed that the corresponding mouse gene, Sftp2, maps to chromosome 14.

Reference

Anti-Prosurfactant Protein C/SFTPC Antibody被引用在5文献中。

Selected Validation Data



Western blot analysis of Prosurfactant Protein C/SFTPC using anti-Prosurfactant Protein C/SFTPC antibody (A02001). The sample well of each lane was loaded with 30 ug of sample under reducing conditions.

Lane 1: Rat lung tissue lysates,

Lane 2: Mouse lung tissue lysates.

After electrophoresis, proteins were transferred to a membrane.

Then the membrane was incubated with rabbit anti-Prosurfactant Protein C/SFTPC antigen affinity purified polyclonal antibody

(A02001) at a dilution of 1:1000 and probed with a goat anti-rabbit IgG-HRP secondary antibody (Catalog # BA1054). The signal is

developed using ECL Plus Western Blotting Substrate (Catalog # AR1197). A specific band was detected for Prosurfactant Protein

C/SFTPC at approximately 21 kDa. The expected band size for

Prosurfactant Protein C/SFTPC is at 21 kDa.