

Basic Information

Product Name	Anti-Hemopexin/HPX Antibody
Gene Name	HPX
Source	Rabbit
Clonality	Polyclonal
Isotype	IgG
Species Reactivity	human, mouse, rat
Tested Application	WB, ELISA
Contents	500 ug/ml antibody with PBS, 0.02% NaN ₃ , 1 mg/ml BSA and 50% glycerol.
Immunogen	E.coli-derived human Hemopexin/HPX recombinant protein (Position: V97-A447).
Concentration	500 ug/ml
Purification	Immunogen affinity purified.
Observed MW	70-75 kDa
Dilution Ratios	Western blot (WB):1:500-2000 ELISA: 1:100-1000

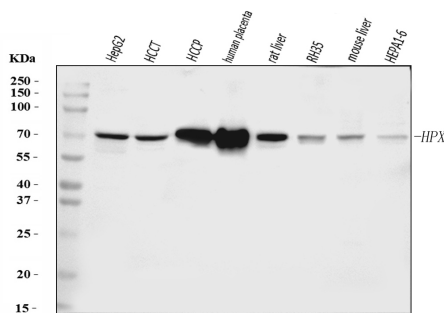
Storage

12 months from date of receipt, -20°C as supplied.

Background Information

Hemopexin (or haemopexin; Hpx; Hx), also known as beta-1B-glycoprotein, is a glycoprotein that in humans is encoded by the HPX gene and belongs to hemopexin family of proteins. This gene encodes a plasma glycoprotein that binds heme with high affinity. The encoded protein is an acute phase protein that transports heme from the plasma to the liver and may be involved in protecting cells from oxidative stress.

Selected Validation Data



Western blot analysis of Hemopexin/HPX using anti-Hemopexin/HPX antibody (A02237-2). The sample well of each lane was loaded with 30 ug of sample under reducing conditions.

Lane 1: HEPG2 whole cell lysates,

Lane 2: HCCT tissue lysates,

Lane 3: HCCP tissue lysates,

Lane 4: human placenta tissue lysates,

Lane 5: rat liver tissue lysates,

Lane 6: RH35 whole cell lysates,

Lane 7: mouse liver tissue lysates,

Lane 8: HEPA1-6 whole cell lysates.

After electrophoresis, proteins were transferred to a membrane.

Then the membrane was incubated with rabbit anti-Hemopexin/HPX antigen affinity purified polyclonal antibody (A02237-2) at a dilution of 1:1000 and probed with a goat anti-rabbit IgG-HRP secondary antibody (Catalog # BA1054). The signal is developed using ECL Plus Western Blotting Substrate (Catalog # AR1197). A specific band was detected for Hemopexin/HPX at approximately 70-75 kDa. The expected band size for Hemopexin/HPX is at 52 kDa.