

Basic Information

Product Name	Anti-Cytokeratin 17/KRT17-Specific Antibody	
Gene Name	KRT17	
Source	Rabbit	
Clonality	Polyclonal	
Isotype	IgG	
Species Reactivity	human, mouse, rat	
Tested Application	WB, IHC, ICC/IF, IP, FCM, ELISA	
Contents	500 ug/ml antibody with PBS, 0.02% NaN ₃ , 1 mg BSA and 50% glycerol.	
Concentration	500 ug/ml	
Purification	Immunogen affinity purified.	
Observed MW	48 kDa	
Dilution Ratios	Western blot (WB): 1:500-2000 Immunohistochemistry (IHC): 1:50-400 Immunocytochemistry/Immunofluorescence (ICC/IF): 1:50-400 ImmunoPrecipitation (IP): 1:50 Flow Cytometry (FCM): 1-3 µg/1x10 ⁶ cells Enzyme linked immunosorbent assay (ELISA): 1:100-1000 (Boiling the paraffin sections in 10mM citrate buffer,pH6.0,or PH8.0 EDTA repair liquid for 20 mins is required for the staining of formalin/paraffin sections.) Optimal working dilutions must be determined by end user.	

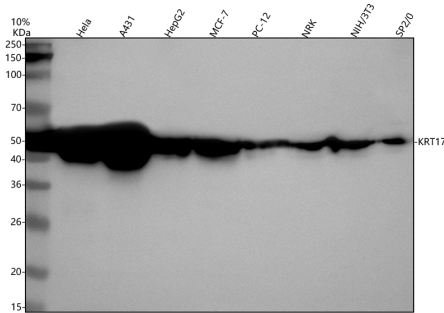
Storage

12 months from date of receipt, -20°C as supplied.

Background Information

Keratins are a large family of proteins that form the intermediate filament cytoskeleton of epithelial cells, which are classified into two major sequence types. Type I keratins are a group of acidic intermediate filament proteins, including K9-K23, and the hair keratins Ha1-Ha8. Type II keratins are the basic or neutral counterparts to the acidic type I keratins, including K1-K8, and the hair keratins, Hb1-Hb6. Keratin 17 is a type I cytokeratin. It is found in nail beds, hair follicles, sebaceous glands, and other epidermal appendages. It is used as a marker for trauma. This antibody is specifically against KRT17.

Selected Validation Data



Western blot analysis of Cytokeratin 17/KRT17 using anti-Cytokeratin 17/KRT17 antibody (A02289-1). The sample well of each lane was loaded with 30 ug of sample under reducing conditions.

Lane 1: human Hela whole cell lysates,

Lane 2: human A431 whole cell lysates,

Lane 3: human HepG2 whole cell lysates,

Lane 4: human MCF-7 whole cell lysates,

Lane 5: rat PC-12 whole cell lysates,

Lane 6: rat NRK whole cell lysates,

Lane 7: mouse NIH/3T3 whole cell lysates,

Lane 8: mouse SP2/0 whole cell lysates.

After electrophoresis, proteins were transferred to a membrane. Then the membrane was incubated with rabbit anti-Cytokeratin 17/KRT17 antigen affinity purified polyclonal antibody (A02289-1) at a dilution of 1:1000 and probed with a goat anti-rabbit IgG-HRP secondary antibody (Catalog # BA1054). The signal is developed using ECL Plus Western Blotting Substrate (Catalog # AR1197). A specific band was detected for Cytokeratin 17/KRT17 at approximately 48 kDa. The expected band size for Cytokeratin 17/KRT17 is at 48 kDa.