

Basic Information

Product Name	Anti-Alpha Antichymotrypsin/SERPINA3 Antibody	
Gene Name	SERPINA3	
Source	Rabbit	
Clonality	Polyclonal	
Isotype	IgG	
Species Reactivity	human	
Tested Application	WB, FCM, ELISA	
Contents	500 ug/ml antibody with PBS, 0.02% NaN ₃ , 1 mg/ml BSA and 50% glycerol.	
Immunogen	E.coli-derived human AACT/SERPINA3 recombinant protein (Position: H24-A423).	
Concentration	500 ug/ml	
Purification	Immunogen affinity purified.	
Observed MW	50-60 kDa	
Dilution Ratios	Western blot (WB): 1:500-2000 Flow Cytometry (Fixed): 1:50-200 Enzyme linked immunosorbent assay (ELISA):1:100-1000	

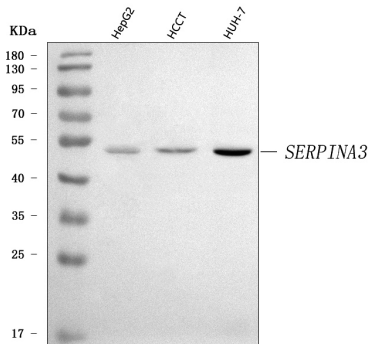
Storage

12 months from date of receipt, -20°C as supplied.

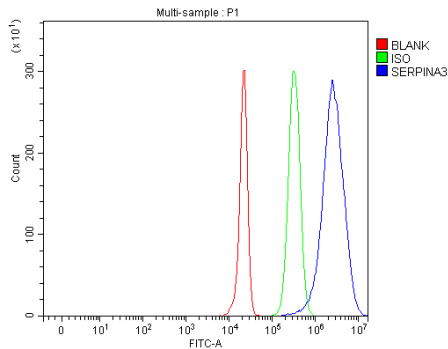
Background Information

Alpha 1-antichymotrypsin, also called serpin peptidase inhibitor, clade A(alpha-1 antiproteinase, antitrypsin), member 3 or GIG24 is an alpha globulin glycoprotein that is a member of the serpin superfamily. In humans, it is encoded by the SERPINA3 gene. This gene is mapped to 14q32.13. The protein encoded by this gene is a plasma protease inhibitor and member of the serine protease inhibitor class. Polymorphisms in this protein appear to be tissue specific and influence protease targeting. Variations in this protein's sequence have been implicated in Alzheimer's disease, and deficiency of this protein has been associated with liver disease. Mutations have been identified in patients with Parkinson disease and chronic obstructive pulmonary disease.

Selected Validation Data



Western blot analysis of anti- AACT/SERPINA3 antibody (A02312-3). The sample well of each lane was loaded with 30ug of sample under reducing conditions. Lane 1: human HepG2 whole cell lysates, Lane 2: human hepatocellular carcinoma tumor tissue (HCCT) lysates, Lane 3: human HUH-7 whole cell lysates. Use rabbit anti- AACT/SERPINA3 1:1000, probed with a goat anti-rabbit IgG-HRP secondary antibody. The signal is developed using an Enhanced Chemiluminescent detection (ECL) kit (Catalog#EK1002). A specific band was detected for AACT/SERPINA3 at approximately 50KD. The expected band size for AACT/SERPINA3 is at 48KD.



Flow Cytometry analysis of HepG2 cells using anti-Alpha Antichymotrypsin/SERPINA3 antibody (A02312-3).

Overlay histogram showing HepG2 cells stained with A02312-3 (Blue line). The cells were fixed with 4% paraformaldehyde and blocked with 10% normal goat serum. And then incubated with rabbit anti-Alpha Antichymotrypsin/SERPINA3 Antibody (A02312-3) at 1:100 dilution for 30 min at 20°C. DyLight®488 conjugated goat anti-rabbit IgG (BA1127) was used as secondary antibody at 1:100 dilution for 30 minutes at 20°C. Isotype control antibody (Green line) was rabbit IgG at 1:100 dilution used under the same conditions. Unlabelled sample without incubation with primary antibody and secondary antibody (Red line) was used as a blank control.