

## Basic Information

Product Name	Anti-Cytokeratin 7/KRT7 Antibody	
Gene Name	KRT7	
Source	Rabbit	
Clonality	Polyclonal	
Isotype	IgG	
Species Reactivity	human	
Tested Application	WB, IHC	
Contents	500 ug/ml antibody with PBS, 0.02% NaN <sub>3</sub> , 1 mg/ml BSA and 50% glycerol.	
Immunogen	A synthetic peptide corresponding to a sequence in the middle region of human KRT7, which shares 91.3% amino acid (aa) sequence identity with mouse and rat KRT7.	
Concentration	500 ug/ml	
Purification	Immunogen affinity purified.	
Observed MW	51 kDa	
Dilution Ratios	Western blot (WB): 1:500-2000 Immunohistochemistry (IHC): 1:50-400 (Boiling the paraffin sections in 10mM citrate buffer, pH6.0, or PH8.0 EDTA repair liquid for 20 mins is required for the staining of formalin/paraffin sections.) Optimal working dilutions must be determined by end user.	

## Storage

12 months from date of receipt, -20°C as supplied.

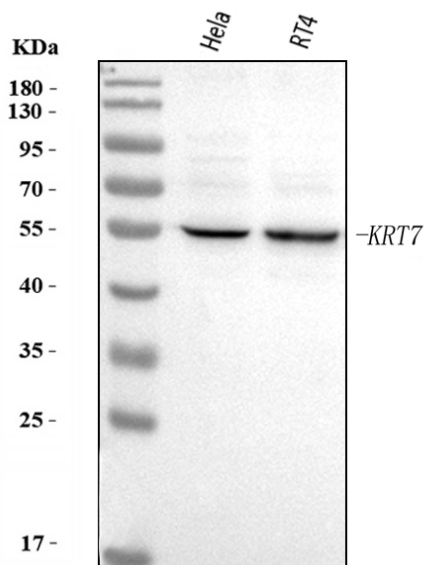
## Background Information

Keratin, type II cytoskeletal 7 also known as cytokeratin-7 (CK-7) or keratin-7 (K7) or sarcolectin (SCL) is a protein that in humans is encoded by the KRT7 gene. The protein encoded by this gene is a member of the keratin gene family. The type II cytokeratins consist of basic or neutral proteins which are arranged in pairs of heterotypic keratin chains coexpressed during differentiation of simple and stratified epithelial tissues. This type II cytokeratin is specifically expressed in the simple epithelia lining the cavities of the internal organs and in the gland ducts and blood vessels. The genes encoding the type II cytokeratins are clustered in a region of chromosome 12q12-q13. Alternative splicing may result in several transcript variants; however, not all variants have been fully described.

## Reference

Anti-Cytokeratin 7/KRT7 Antibody被引用在9文献中。

## Selected Validation Data

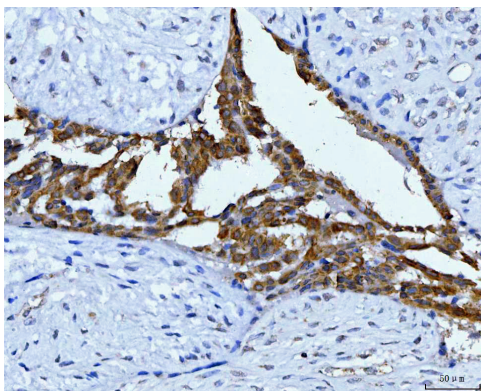


Western blot analysis of Cytokeratin 7/KRT7 using anti-Cytokeratin 7/KRT7 antibody (A02416-2). The sample well of each lane was loaded with 30 ug of sample under reducing conditions.

Lane 1: HeLa whole cell lysates,

Lane 2: RT4 whole cell lysates.

After electrophoresis, proteins were transferred to a membrane. Then the membrane was incubated with rabbit anti-Cytokeratin 7/KRT7 antigen affinity purified polyclonal antibody (A02416-2) at a dilution of 1:1000 and probed with a goat anti-rabbit IgG-HRP secondary antibody (Catalog # BA1054). The signal is developed using ECL Plus Western Blotting Substrate (Catalog # AR1197). A specific band was detected for Cytokeratin 7/KRT7 at approximately 51 kDa. The expected band size for Cytokeratin 7/KRT7 is at 51 kDa.



IHC analysis of Cytokeratin 7/KRT7 using anti-Cytokeratin 7/KRT7 antibody (A02416-2).

Cytokeratin 7/KRT7 was detected in a paraffin-embedded section of human breast cancer tissue. The tissue section was incubated with rabbit anti-Cytokeratin 7/KRT7 Antibody (A02416-2) at a dilution of 1:200 and developed using HRP Conjugated Rabbit IgG Super Vision Assay Kit (Catalog # SV0002) with DAB (Catalog # AR1027) as the chromogen.