

Basic Information

Product Name	Anti-NAF1 Antibody
Gene Name	NAF1
Source	Rabbit
Clonality	Polyclonal
Isotype	IgG
Species Reactivity	human
Tested Application	WB, ELISA
Contents	500 ug/ml antibody with PBS, 0.02% NaN ₃ , 1 mg/ml BSA and 50% glycerol.
Immunogen	E.coli-derived human NAF1 recombinant protein (Position: K173-E340).
Concentration	500 ug/ml
Purification	Immunogen affinity purified.
Observed MW	70 kDa
Dilution Ratios	Western blot (WB): 1:500-2000 Enzyme linked immunosorbent assay (ELISA):1:100-1000

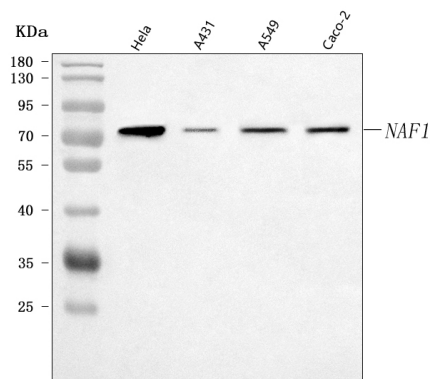
Storage

12 months from date of receipt, -20°C as supplied.

Background Information

Enables identical protein binding activity and telomerase RNA binding activity. Involved in regulation of nucleobase-containing compound metabolic process; ribosome biogenesis; and telomerase holoenzyme complex assembly. Located in nucleoplasm. Part of sno(s)RNA-containing ribonucleoprotein complex.

Selected Validation Data



Western blot analysis of anti-NAF1 antibody (A02629-1). The sample well of each lane was loaded with 30 ug of sample under reducing conditions.

Lane 1: human HeLa whole cell lysates,

Lane 2: human A431 whole cell lysates,

Lane 3: human A549 whole cell lysates,

Lane 4: human Caco-2 whole cell lysates.

After electrophoresis, proteins were transferred to a membrane.

Then the membrane was incubated with rabbit anti-NAF1 antigen

affinity purified polyclonal antibody (A02629-1) and probed with a

goat anti-rabbit IgG-HRP secondary antibody (Catalog # BA1054).

The signal is developed using ECL Plus Western Blotting Substrate

(Catalog # AR1197). A specific band was detected for NAF1 at

approximately 70 kDa. The expected band size for NAF1 is at 54

kDa.