

Basic Information

Product Name	Anti-Caspase 6/CASP6 Antibody
Gene Name	CASP6
Source	Rabbit
Clonality	Polyclonal
Isotype	IgG
Species Reactivity	human, mouse, rat
Tested Application	WB
Contents	500 ug/ml antibody with PBS, 0.02% NaN ₃ , 1 mg/ml BSA and 50% glycerol.
Immunogen	E. coli-derived human Caspase-6 recombinant protein (Position: A194-N293). Human Caspase-6 shares 95.9% and 93.9% amino acid (aa) sequence identity with mouse and rat Caspase-6, respectively.
Concentration	500 ug/ml
Purification	Immunogen affinity purified.
Observed MW	33 kDa
Dilution Ratios	Western blot (WB):1:500-2000

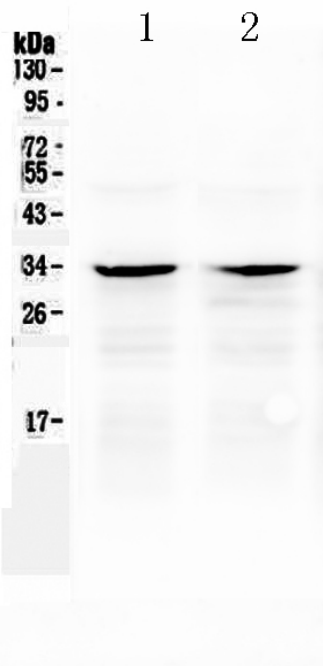
Storage

12 months from date of receipt, -20°C as supplied.

Background Information

Caspase 6 is an enzyme that in humans is encoded by the CASP6 gene. This gene encodes a protein that is a member of the cysteine-aspartic acid protease (caspase) family. Using radiation hybrid mapping, the CASP6 gene is localized to human chromosome 4q25-q26. It functions as a downstream enzyme in the caspase activation cascade. And CASP6 can cleave lamin A to its signature apoptotic fragment.

Selected Validation Data



Western blot analysis of Caspase 6/CASP6 using anti-Caspase 6/CASP6 antibody (A02631). The sample well of each lane was loaded with 30 ug of sample under reducing conditions.

Lane 1: rat kidney tissue lysates,

Lane 2: mouse kidney tissue lysates.

After electrophoresis, proteins were transferred to a membrane. Then the membrane was incubated with rabbit anti-Caspase 6/CASP6 antigen affinity purified polyclonal antibody (A02631) at a dilution of 1:1000 and probed with a goat anti-rabbit IgG-HRP secondary antibody (Catalog # BA1054). The signal is developed using ECL Plus Western Blotting Substrate (Catalog # AR1197). A specific band was detected for Caspase 6/CASP6 at approximately 33 kDa. The expected band size for Caspase 6/CASP6 is at 33 kDa.