

Basic Information

| | | |
|---------------------------|---|--------------|
| Product Name | Anti-CXADR Antibody | |
| Gene Name | CXADR | |
| Source | Rabbit | |
| Clonality | Polyclonal | |
| Isotype | IgG | |
| Species Reactivity | human, mouse, rat, monkey | |
| Tested Application | WB, ICC/IF, FCM, ELISA | |
| Contents | 500 ug/ml antibody with PBS, 0.02% NaN ₃ , 1 mg/ml BSA and 50% glycerol. | |
| Immunogen | E.coli-derived human CXADR recombinant protein (Position: E35-V365). Human CXADR shares 91.2% and 91.5% amino acid (aa) sequence identity with mouse and rat CXADR, respectively. | |
| Concentration | 500 ug/ml | |
| Purification | Immunogen affinity purified. | |
| Observed MW | 50 kDa | |
| Dilution Ratios | Western blot (WB): | 1:1000-10000 |
| | Immunocytochemistry/Immunofluorescence (ICC/IF): | 1:50-400 |
| | Flow Cytometry (Fixed): | 1:50-200 |
| | Enzyme linked immunosorbent assay (ELISA): | 1:100-1000 |

Storage

12 months from date of receipt, -20°C as supplied.

Background Information

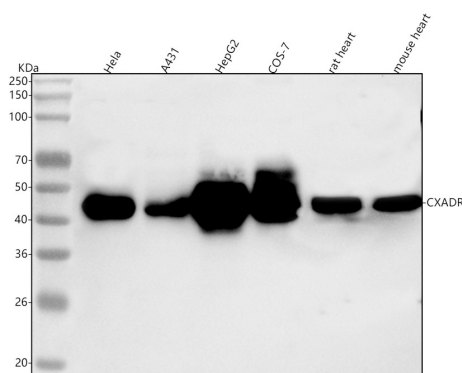
CXADR(Coxsackie virus and adenovirus receptor) is a protein that in humans is encoded by the CXADR gene, also known as CAR, CVB3-binding protein, Coxsackievirus B-adenovirus receptor. The CAR cDNA encodes a predicted 365-amino acid polypeptide that contains a single transmembrane domain and is a member of the immunoglobulin superfamily. By Northern blot analysis, they detected highest expression of 1.4-kb and 6-kb CXADR transcripts in pancreas, brain, heart, small intestine, testis, and prostate, lower expression in liver and lung, and no expression in kidney, placenta, peripheral blood leukocytes, thymus, and spleen. In comparison, mouse Cxadr showed highest expression in liver, and lower levels in kidney, heart, lung, and brain. The protein encoded by this gene is a type I

membrane receptor for group B coxsackie viruses and subgroup C adenoviruses. Pseudogenes of this gene are found on chromosomes 15, 18, and 21. CAR is strongly expressed in the developing central nervous system. It functions as a homophilic and also as a heterophilic cell adhesion molecule through its interactions with extracellular matrix glycoproteins, such as: fibronectin, agrin, laminin-1 and tenascin-R.

Reference

Anti-CXADR Antibody被引用在1文献中。

Selected Validation Data



Western blot analysis of CXADR using anti-CXADR antibody

(A02747-1). The sample well of each lane was loaded with 30 ug of sample under reducing conditions.

Lane 1: human Hela whole cell lysates,

Lane 2: human A431 whole cell lysates,

Lane 3: human HepG2 whole cell lysates,

Lane 4: monkey COS-7 whole cell lysates,

Lane 5: rat heart tissue lysates,

Lane 6: mouse heart tissue lysates.

After electrophoresis, proteins were transferred to a membrane.

Then the membrane was incubated with rabbit anti-CXADR antigen

affinity purified polyclonal antibody (A02747-1) at a dilution of

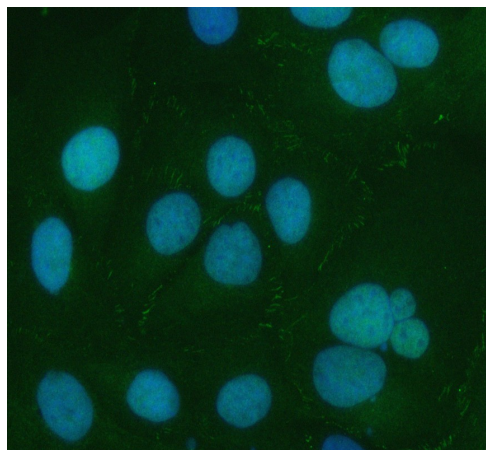
1:1000 and probed with a goat anti-rabbit IgG-HRP secondary

antibody (Catalog # BA1054). The signal is developed using ECL Plus

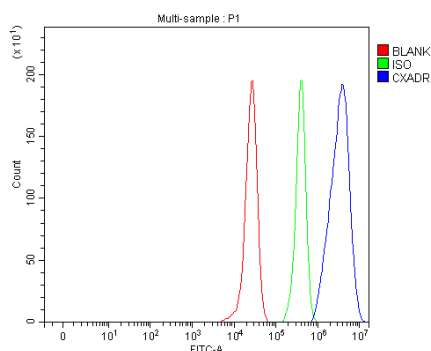
Western Blotting Substrate (Catalog # AR1197). A specific band was

detected for CXADR at approximately 45 kDa. The expected band

size for CXADR is at 40 kDa.



ICC/IF analysis of CXADR using anti-CXADR antibody (A02747-1). CXADR was detected in an immunocytochemical section of U2OS cells. The section was incubated with rabbit anti-CXADR Antibody (A02747-1) at a dilution of 1:100. Fluoro488 Conjugated Goat Anti-Rabbit IgG (Green) (Catalog # BA1127) was used as secondary antibody. The section was counterstained with DAPI (Catalog # AR1176) (Blue).



Flow Cytometry analysis of HepG2 cells using anti-CXADR antibody (A02747-1).

Overlay histogram showing HepG2 cells stained with A02747-1 (Blue line). The cells were fixed with 4% paraformaldehyde and blocked with 10% normal goat serum. And then incubated with rabbit anti-CXADR Antibody (A02747-1) at 1:100 dilution for 30 min at 20°C. Fluoro488 conjugated goat anti-rabbit IgG (BA1127) was used as secondary antibody at 1:100 dilution for 30 minutes at 20°C. Isotype control antibody (Green line) was rabbit IgG at 1:100 dilution used under the same conditions. Unlabelled sample (Red line) was also used as a control.