

Basic Information

Product Name	Anti-Cytokeratin 20/KRT20 Antibody	
Gene Name	Krt20	
Source	Rabbit	
Clonality	Polyclonal	
Isotype	IgG	
Species Reactivity	human, mouse, rat	
Tested Application	WB, IHC, FCM, ICC/IF, ELISA	
Contents	500 ug/ml antibody with PBS, 0.02% NaN ₃ , 1 mg/ml BSA and 50% glycerol.	
Immunogen	E.coli-derived mouse Cytokeratin 20/Krt20 recombinant protein (Position: R29-V431).	
Concentration	500 ug/ml	
Purification	Immunogen affinity purified.	
Observed MW	48 kDa	
Dilution Ratios	Western blot (WB): 1:500-2000 Immunohistochemistry (IHC): 1:50-400 Immunocytochemistry/Immunofluorescence (ICC/IF): 1:50-400 Flow Cytometry (Fixed): 1:50-200 Enzyme linked immunosorbent assay (ELISA): 1:100-1000 (Boiling the paraffin sections in 10mM citrate buffer, pH6.0, or PH8.0 EDTA repair liquid for 20 mins is required for the staining of formalin/paraffin sections.) Optimal working dilutions must be determined by end user.	

Storage

12 months from date of receipt, -20°C as supplied.

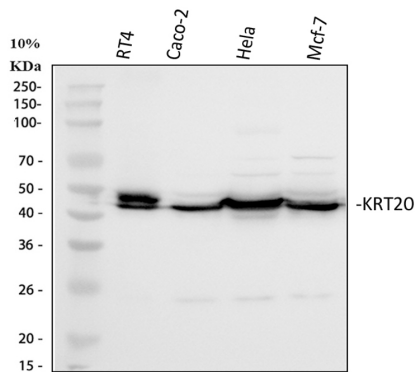
Background Information

Keratin 20, often abbreviated CK20, is a protein that in humans is encoded by the KRT20 gene. This gene encodes a member of the keratin protein family and is found within a cluster of cytokeratin genes on chromosome 11. Keratins are cytoskeletal proteins that are preferentially expressed in epithelial cells. The encoded protein may help maintain intermediate filament organization in intestinal epithelium. Phosphorylation of this protein may also influence mucin secretion in the small intestine.

Reference

Anti-Cytokeratin 20/KRT20 Antibody被引用在1文献中。

Selected Validation Data



Western blot analysis of Cytokeratin 20/KRT20 using anti-Cytokeratin 20/KRT20 antibody (A02828-2). The sample well of each lane was loaded with 30 ug of sample under reducing conditions.

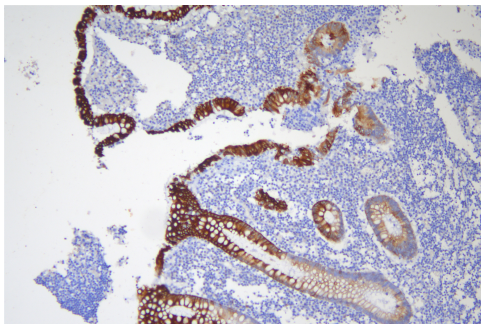
Lane 1: human RT4 whole cell lysates,

Lane 2: human Caco-2 whole cell lysates,

Lane 3: human Hela whole cell lysates,

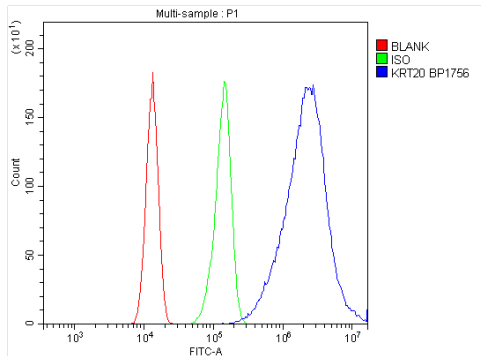
Lane 4: human MCF-7 whole cell lysates.

After electrophoresis, proteins were transferred to a membrane. Then the membrane was incubated with rabbit anti-Cytokeratin 20/KRT20 antigen affinity purified polyclonal antibody (A02828-2) at a dilution of 1:1000 and probed with a goat anti-rabbit IgG-HRP secondary antibody (Catalog # BA1054). The signal is developed using ECL Plus Western Blotting Substrate (Catalog # AR1197). A specific band was detected for Cytokeratin 20/KRT20 at approximately 48 kDa. The expected band size for Cytokeratin 20/KRT20 is at 48 kDa.



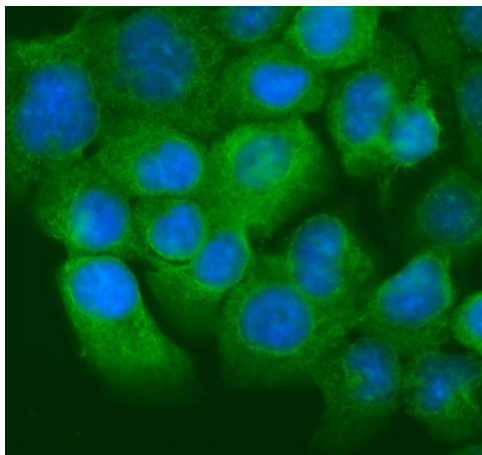
IHC analysis of Cytokeratin 20/KRT20 using anti-Cytokeratin 20/KRT20 antibody (A02828-2).

Cytokeratin 20/KRT20 was detected in a paraffin-embedded section of human appendix tissue. Biotinylated goat anti-rabbit IgG was used as secondary antibody. The tissue section was incubated with rabbit anti-Cytokeratin 20/KRT20 Antibody (A02828-2) at a dilution of 1:200 and developed using Streptavidin-Biotin-Complex (SABC) (Catalog # SA1022) with DAB (Catalog # AR1027) as the chromogen.



Flow Cytometry analysis of Caco-2 cells using anti-Cytokeratin 20/KRT20 antibody (A02828-2).

Overlay histogram showing Caco-2 cells stained with A02828-2 (Blue line). To facilitate intracellular staining, cells were fixed with 4% paraformaldehyde and permeabilized with permeabilization buffer. The cells were blocked with 10% normal goat serum. And then incubated with rabbit anti-Cytokeratin 20/KRT20 Antibody (A02828-2) at 1:100 dilution for 30 min at 20°C. DyLight®488 conjugated goat anti-rabbit IgG (BA1127) was used as secondary antibody at 1:100 dilution for 30 minutes at 20°C. Isotype control antibody (Green line) was rabbit IgG at 1:100 dilution used under the same conditions. Unlabelled sample without incubation with primary antibody and secondary antibody (Red line) was used as a blank control.



IF analysis of Cytokeratin 20/KRT20 using anti-Cytokeratin 20/KRT20 antibody (A02828-2).

Cytokeratin 20/KRT20 was detected in an immunocytochemical section of A431 cells. DyLight®488 Conjugated Goat Anti-Rabbit IgG (Green) (Catalog # BA1127) was used as secondary antibody. The section was counterstained with DAPI (Catalog # AR1176) (Blue).