

## Basic Information

<b>Product Name</b>	Anti-KLF10 Antibody	
<b>Gene Name</b>	KLF10	
<b>Source</b>	Rabbit	
<b>Clonality</b>	Polyclonal	
<b>Isotype</b>	IgG	
<b>Species Reactivity</b>	human	
<b>Tested Application</b>	WB, ICC/IF, ELISA	
<b>Contents</b>	500 ug/ml antibody with PBS, 0.02% NaN <sub>3</sub> , 1 mg/ml BSA and 50% glycerol.	
<b>Immunogen</b>	E.coli-derived human KLF10 recombinant protein (Position: K36-A471).	
<b>Concentration</b>	500 ug/ml	
<b>Purification</b>	Immunogen affinity purified.	
<b>Observed MW</b>	53 kDa	
<b>Dilution Ratios</b>	Western blot (WB):	1:500-2000
	Immunocytochemistry/Immunofluorescence (ICC/IF):	1:50-400
	Enzyme linked immunosorbent assay (ELISA):	1:100-1000

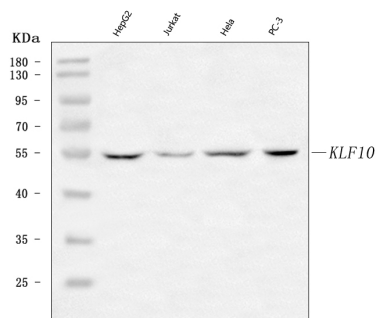
## Storage

12 months from date of receipt, -20°C as supplied.

## Background Information

Kruppel-like factor 10 is a protein that in humans is encoded by the KLF10 gene. This gene encodes a member of a family of proteins that feature C2H2-type zinc finger domains. The encoded protein is a transcriptional repressor that acts as an effector of transforming growth factor beta signaling. Activity of this protein may inhibit the growth of cancers, particularly pancreatic cancer. Alternative splicing results in multiple transcript variants.

## Selected Validation Data



Western blot analysis of KLF10 using anti-KLF10 antibody

(A03419-2). The sample well of each lane was loaded with 30 ug of sample under reducing conditions.

Lane 1: HepG2 whole cell lysates,

Lane 2: Jurkat whole cell lysates,

Lane 3: Hela whole cell lysates,

Lane 4: PC-3 whole cell lysates.

After electrophoresis, proteins were transferred to a membrane.

Then the membrane was incubated with rabbit anti-KLF10 antigen

affinity purified polyclonal antibody (A03419-2) at a dilution of

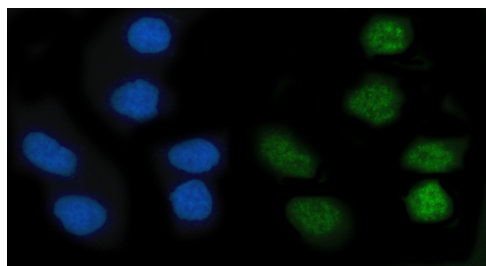
1:1000 and probed with a goat anti-rabbit IgG-HRP secondary

antibody (Catalog # BA1054). The signal is developed using ECL Plus

Western Blotting Substrate (Catalog # AR1197). A specific band was

detected for KLF10 at approximately 53 kDa. The expected band size

for KLF10 is at 53 kDa.



ICC/IF analysis of KLF10 using anti-KLF10 antibody (A03419-2).

KLF10 was detected in an immunocytochemical section of SiHa cells.

The section was incubated with rabbit anti-KLF10 Antibody

(A03419-2) at a dilution of 1:100. Fluoro488 Conjugated Goat Anti-

Rabbit IgG (Green) (Catalog # BA1127) was used as secondary

antibody. The section was counterstained with DAPI (Catalog #

AR1176) (Blue).