

Basic Information

Product Name	Anti-Calpain 2/CAPN2 Antibody	
Gene Name	CAPN2	
Source	Rabbit	
Clonality	Polyclonal	
Isotype	IgG	
Species Reactivity	human, mouse, rat	
Tested Application	WB, IHC	
Contents	500 ug/ml antibody with PBS, 0.02% NaN ₃ , 1 mg/ml BSA and 50% glycerol.	
Immunogen	E. coli-derived human Calpain 2 recombinant protein (Position: R500-L700). Human Calpain 2 shares 93.5% and 92.5% amino acid (aa) sequence identity with mouse and rat Calpain 2, respectively.	
Concentration	500 ug/ml	
Purification	Immunogen affinity purified.	
Observed MW	80 kDa	
Dilution Ratios	Western blot (WB): 1:500-2000 Immunohistochemistry (IHC): 1:50-400 Immunocytochemistry/Immunofluorescence (ICC/IF): 1:50-400 Flow Cytometry (Fixed): 1:50-200 (Boiling the paraffin sections in 10mM citrate buffer, pH6.0, or PH8.0 EDTA repair liquid for 20 mins is required for the staining of formalin/paraffin sections.) Optimal working dilutions must be determined by end user.	

Storage

12 months from date of receipt, -20°C as supplied.

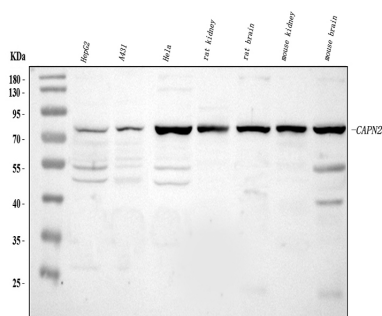
Background Information

Calpain-2 catalytic subunit is a protein that in humans is encoded by the CAPN2 gene. The calpains, calcium-activated neutral proteases, are nonlysosomal, intracellular cysteine proteases. The mammalian calpains include ubiquitous, stomach-specific, and muscle-specific proteins. The ubiquitous enzymes consist of heterodimers with distinct large, catalytic subunits associated with a common small, regulatory subunit. This gene encodes the large subunit of the ubiquitous enzyme, calpain 2. Multiple heterogeneous transcriptional start sites in the 5' UTR have been reported.

Reference

Anti-Calpain 2/CAPN2 Antibody被引用在1文献中。

Selected Validation Data



Western blot analysis of Calpain 2/CAPN2 using anti-Calpain 2/CAPN2 antibody (A03492). The sample well of each lane was loaded with 30 ug of sample under reducing conditions.

Lane 1: HepG2 whole cell lysates,

Lane 2: A413 whole cell lysates,

Lane 3: Hela whole cell lysates,

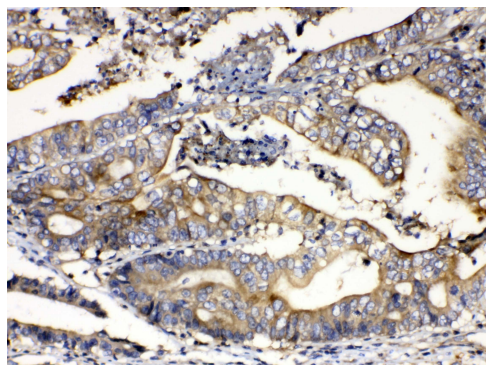
Lane 4: rat kidney tissue lysates,

Lane 5: rat brain tissue lysates,

Lane 6: mouse kidney tissue lysates,

Lane 7: mouse brain tissue lysates.

After electrophoresis, proteins were transferred to a membrane. Then the membrane was incubated with rabbit anti-Calpain 2/CAPN2 antigen affinity purified polyclonal antibody (A03492) at a dilution of 1:1000 and probed with a goat anti-rabbit IgG-HRP secondary antibody (Catalog # BA1054). The signal is developed using ECL Plus Western Blotting Substrate (Catalog # AR1197). A specific band was detected for Calpain 2/CAPN2 at approximately 80 kDa. The expected band size for Calpain 2/CAPN2 is at 80 kDa.



IHC analysis of Calpain 2/CAPN2 using anti-Calpain 2/CAPN2 antibody (A03492).

Calpain 2/CAPN2 was detected in a paraffin-embedded section of human intestinal cancer tissue. Biotinylated goat anti-rabbit IgG was used as secondary antibody. The tissue section was incubated with rabbit anti-Calpain 2/CAPN2 Antibody (A03492) at a dilution of 1:200 and developed using Streptavidin-Biotin-Complex (SABC) (Catalog # SA1022) with DAB (Catalog # AR1027) as the chromogen.

Product datasheet

Anti-Calpain 2/CAPN2 Antibody

Catalog Number: **A03492**



antibody and ELISA experts

BOSTER BIOLOGICAL TECHNOLOGY

Building C21, 3rd to 5th Floors, Optics Valley Biopharmaceutical Accelerator,
East Lake High-Tech Development Zone, Wuhan.

Web: www.boster.com **Phone:** 027-67845390/1/2 **Email:** boster@boster.com