

Basic Information

Product Name	Anti-KLF15 Antibody	
Gene Name	KLF15	
Source	Rabbit	
Clonality	Polyclonal	
Isotype	IgG	
Species Reactivity	human, mouse, rat	
Tested Application	WB, IHC, ELISA	
Contents	500 ug/ml antibody with PBS, 0.02% NaN3, 1 mg/ml BSA and 50% glycerol.	
Immunogen	E.coli-derived human KLF15 recombinant protein (Position: M1-C323).	
Concentration	500 ug/ml	
Purification	Immunogen affinity purified.	
Observed MW	44 kDa	
Dilution Ratios	Western blot (WB):	1:500-2000
	Immunohistochemistry (IHC):	1:50-400
	Enzyme linked immunosorbent assay (ELISA):	1:100-1000
	(Boiling the paraffin sections in 10mM citrate buffer,pH6.0,or PH8.0 EDTA repair liquid for 20 mins is required for the staining of formalin/paraffin sections.) Optimal working dilutions must be determined by end user.	

Storage

12 months from date of receipt, -20°C as supplied.

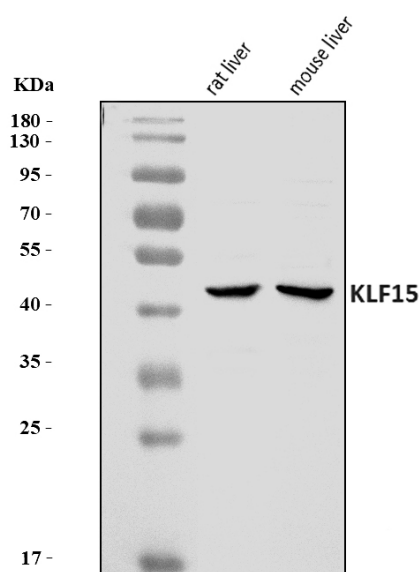
Background Information

Kruppel-like factor 15 is a protein that in humans is encoded by the KLF15 gene in the Kruppel-like factor family. KLF15, a kidney-enriched Krüppel-like zinc finger-containing transcription factors, is a transcriptional activator that binds the CLCNKA promoter. The nuclear protein KLF15, is expressed primarily in liver, heart, skeletal muscle and kidney tissues but is not detected in lymphoid tissues or bone marrow. It is an important regulator of GLUT4 in both adipose and muscle tissues. Although the calculated molecular mass of KLF15 is 44 kDa, the apparent molecular mass on SDS-PAGE is 65 kDa due to the post-translational modifications.

Reference

Anti-KLF15 Antibody被引用在1文献中。

Selected Validation Data



Western blot analysis of KLF15 using anti-KLF15 antibody

(A03661-1). The sample well of each lane was loaded with 30 ug of sample under reducing conditions.

Lane 1: rat liver tissue lysates,

Lane 2: mouse liver tissue lysates.

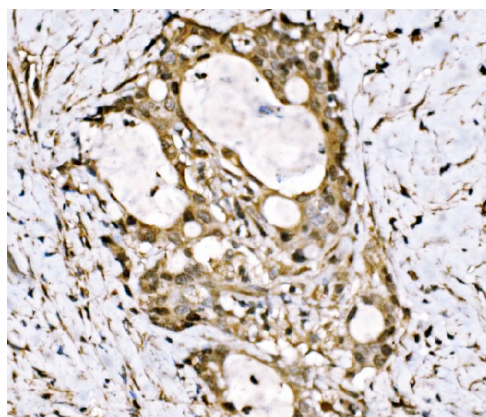
After electrophoresis, proteins were transferred to a membrane.

Then the membrane was incubated with rabbit anti-KLF15 antigen

affinity purified polyclonal antibody (A03661-1) at a dilution of

1:1000 and probed with a goat anti-rabbit IgG-HRP secondary antibody (Catalog # BA1054). The signal is developed using ECL Plus

Western Blotting Substrate (Catalog # AR1197). A specific band was detected for KLF15 at approximately 44 kDa. The expected band size for KLF15 is at 44 kDa.



IHC analysis of KLF15 using anti-KLF15 antibody (A03661-1).

KLF15 was detected in a paraffin-embedded section of human Gall bladder adenocarcinoma tissue. Biotinylated goat anti-rabbit IgG was used as secondary antibody. The tissue section was incubated with rabbit anti-KLF15 Antibody (A03661-1) at a dilution of 1:200 and developed using Streptavidin-Biotin-Complex (SABC) (Catalog # SA1022) with DAB (Catalog # AR1027) as the chromogen.