

## Basic Information

<b>Product Name</b>	Anti-FKBP5 Antibody	
<b>Gene Name</b>	FKBP5	
<b>Source</b>	Rabbit	
<b>Clonality</b>	Polyclonal	
<b>Isotype</b>	IgG	
<b>Species Reactivity</b>	human, mouse, rat	
<b>Tested Application</b>	WB, IHC, IP, ELISA	
<b>Contents</b>	500 ug/ml antibody with PBS, 0.02% NaN <sub>3</sub> , 1 mg BSA and 50% glycerol.	
<b>Immunogen</b>	E.coli-derived human FKBP5 recombinant protein (Position: M1-V380).	
<b>Concentration</b>	500 ug/ml	
<b>Purification</b>	Immunogen affinity purified.	
<b>Observed MW</b>	55 kDa	
<b>Dilution Ratios</b>	Western blot (WB):	1:500-2000
	Immunohistochemistry (IHC):	1:50-400
	ImmunoPrecipitation (IP):	1:50
	Enzyme linked immunosorbent assay (ELISA):	1:100-1000
	(Boiling the paraffin sections in 10mM citrate buffer,pH6.0,or PH8.0 EDTA repair liquid for 20 mins is required for the staining of formalin/paraffin sections.) Optimal working dilutions must be determined by end user.	

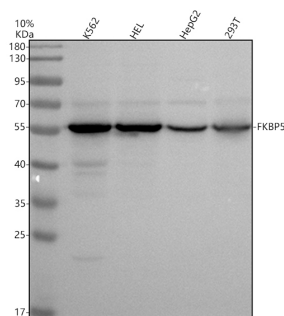
## Storage

12 months from date of receipt, -20°C as supplied.

## Background Information

The protein encoded by this gene is a member of the immunophilin protein family, which play a role in immunoregulation and basic cellular processes involving protein folding and trafficking. This encoded protein is a cis-trans prolyl isomerase that binds to the immunosuppressants FK506 and rapamycin. It is thought to mediate calcineurin inhibition. It also interacts functionally with mature hetero-oligomeric progesterone receptor complexes along with the 90 kDa heat shock protein and P23 protein. This gene has been found to have multiple polyadenylation sites. Alternative splicing results in multiple transcript variants.

## Selected Validation Data



Western blot analysis of FKBP5 using anti-FKBP5 antibody

(A04182-2). The sample well of each lane was loaded with 30  $\mu$ g of sample under reducing conditions.

Lane 1: human K562 whole cell lysates,

Lane 2: human HEL whole cell lysates,

Lane 3: human HepG2 whole cell lysates,

Lane 4: human 293T whole cell lysates.

After electrophoresis, proteins were transferred to a membrane.

Then the membrane was incubated with rabbit anti-FKBP5 antigen

affinity purified polyclonal antibody (A04182-2) at a dilution of

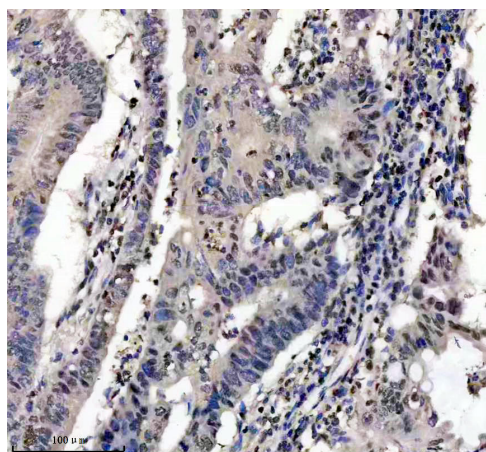
1:1000 and probed with a goat anti-rabbit IgG-HRP secondary

antibody (Catalog # BA1054). The signal is developed using ECL Plus

Western Blotting Substrate (Catalog # AR1197). A specific band was

detected for FKBP5 at approximately 55 kDa. The expected band

size for FKBP5 is at 51 kDa.



IHC analysis of FKBP5 using anti-FKBP5 antibody (A04182-2).

FKBP5 was detected in a paraffin-embedded section of human colon

cancer tissue. The tissue section was incubated with rabbit anti-

FKBP5 Antibody (A04182-2) at a dilution of 1:200 and developed

using HRP Conjugated Rabbit IgG Super Vision Assay Kit (Catalog #

SV0002) with DAB (Catalog # AR1027) as the chromogen.