

Basic Information

Product Name	Anti-CD3 Gamma/CD3G Antibody	
Gene Name	CD3G	
Source	Rabbit	
Clonality	Polyclonal	
Isotype	IgG	
Species Reactivity	human	
Tested Application	WB, IHC, ICC/IF, FCM, ELISA	
Contents	500 ug/ml antibody with PBS, 0.02% NaN ₃ , 1 mg/ml BSA and 50% glycerol.	
Immunogen	E. coli-derived human CD3 Gamma/CD3G recombinant protein (Position: Q23-D165). Human CD3G shares 67.8% and 70.6% amino acid (aa) sequence identity with mouse and rat CD3G, respectively.	
Concentration	500 ug/ml	
Purification	Immunogen affinity purified.	
Observed MW	20 kDa	
Dilution Ratios	Western blot (WB):	1:500-2000
	Immunohistochemistry (IHC):	1:50-400
	Immunocytochemistry/Immunofluorescence (ICC/IF):	1:50-400
	Flow Cytometry (Fixed):	1:50-200
	Enzyme linked immunosorbent assay (ELISA):	1:100-1000
	(Boiling the paraffin sections in 10mM citrate buffer,pH6.0,or PH8.0 EDTA repair liquid for 20 mins is required for the staining of formalin/paraffin sections.) Optimal working dilutions must be determined by end user.	

Storage

12 months from date of receipt, -20°C as supplied.

Background Information

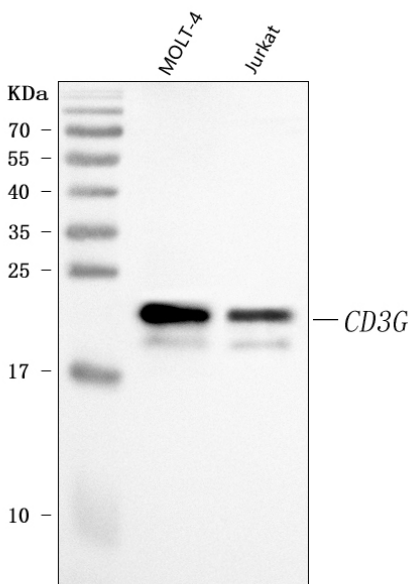
T-cell surface glycoprotein CD3 gamma chain is a protein that in humans is encoded by the CD3G gene. The protein encoded by this gene is the CD3-gamma polypeptide, which together with CD3-epsilon, -delta and -zeta, and the T-cell receptor alpha/beta and gamma/delta heterodimers, forms the T-cell receptor-CD3 complex. This complex plays an important role in coupling antigen recognition to several intracellular signal-transduction pathways. The genes encoding

the epsilon, gamma and delta polypeptides are located in the same cluster on chromosome 11. Defects in this gene are associated with T cell immunodeficiency.

Reference

Anti-CD3 Gamma/CD3G Antibody被引用在1文献中。

Selected Validation Data



Western blot analysis of anti-CD3 Gamma/CD3G antibody

(A04853-2). The sample well of each lane was loaded with 30 ug of sample under reducing conditions.

Lane 1: human MOLT-4 whole cell lysates,

Lane 2: human Jurkat whole cell lysates.

After electrophoresis, proteins were transferred to a membrane.

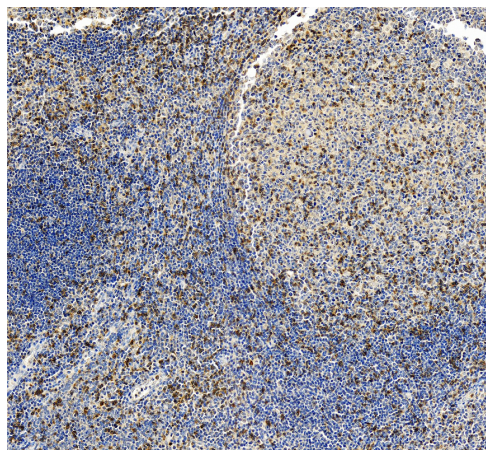
Then the membrane was incubated with rabbit anti-CD3

Gamma/CD3G antigen affinity purified polyclonal antibody

(A04853-2) and probed with a goat anti-rabbit IgG-HRP secondary antibody (Catalog # BA1054). The signal is developed using ECL Plus

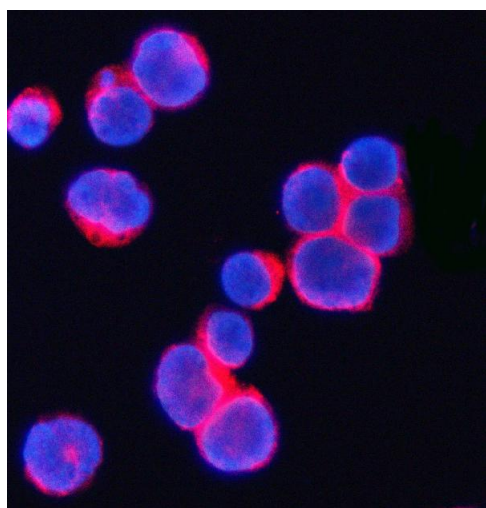
Western Blotting Substrate (Catalog # AR1197). A specific band was detected for CD3 Gamma/CD3G at approximately 20-25 kDa. The

expected band size for CD3 Gamma/CD3G is at 20-25 kDa.



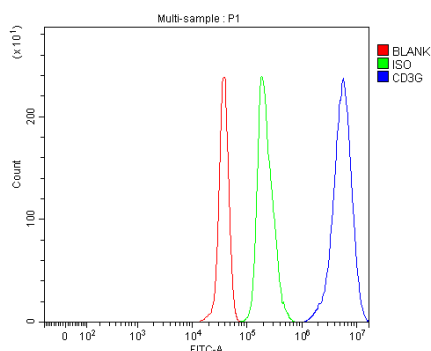
IHC analysis of CD3 Gamma/CD3G using anti-CD3 Gamma/CD3G antibody (A04853-2).

CD3 Gamma/CD3G was detected in a paraffin-embedded section of human tonsil tissue. The tissue section was incubated with rabbit anti-CD3 Gamma/CD3G Antibody (A04853-2) at a dilution of 1:200 and developed using HRP Conjugated Rabbit IgG Super Vision Assay Kit (Catalog # SV0002) with DAB (Catalog # AR1027) as the chromogen.



ICC/IF analysis of CD3 Gamma/CD3G using anti-CD3 Gamma/CD3G antibody (A04853-2).

CD3 Gamma/CD3G was detected in an immunocytochemical section of Jurkat cells. Cy3-conjugated Anti-rabbit IgG Secondary Antibody (red)(Catalog#BA1032) was used as secondary antibody. The section was counterstained with DAPI (Catalog # AR1176) (Blue).



Flow Cytometry analysis of Jurkat cells using anti-CD3 Gamma/CD3G antibody (A04853-2).

Overlay histogram showing Jurkat cells stained with A04853-2 (Blue line). To facilitate intracellular staining, cells were fixed with 4% paraformaldehyde and permeabilized with permeabilization buffer. The cells were blocked with 10% normal goat serum. And then incubated with rabbit anti-CD3 Gamma/CD3G Antibody (A04853-2, 1:100). Fluoro488 conjugated goat anti-rabbit IgG (BA1127, 1:100) was used as secondary antibody. Isotype control antibody (Green line) was rabbit IgG (Catalog # BA1045) (1:100) used under the same conditions. Unlabelled sample (Red line) was also used as a control.

Product datasheet

Anti-CD3 Gamma/CD3G Antibody

Catalog Number: **A04853-2**

BOSTER[®]

antibody and ELISA experts

BOSTER BIOLOGICAL TECHNOLOGY

Building C21, 3rd to 5th Floors, Optics Valley Biopharmaceutical Accelerator,
East Lake High-Tech Development Zone, Wuhan.

Web: www.boster.com **Phone:** 027-67845390/1/2 **Email:** boster@boster.com