

## Basic Information

<b>Product Name</b>	Anti-LNPEP Antibody	
<b>Gene Name</b>	LNPEP	
<b>Source</b>	Rabbit	
<b>Clonality</b>	Polyclonal	
<b>Isotype</b>	IgG	
<b>Species Reactivity</b>	human, mouse, rat	
<b>Tested Application</b>	WB, IHC, ELISA	
<b>Contents</b>	500 ug/ml antibody with PBS, 0.02% NaN3, 1 mg/ml BSA and 50% glycerol.	
<b>Immunogen</b>	E.coli-derived human LNPEP recombinant protein (Position: E17-T994).	
<b>Concentration</b>	500 ug/ml	
<b>Purification</b>	Immunogen affinity purified.	
<b>Observed MW</b>	117 kDa	
<b>Dilution Ratios</b>	Western blot (WB):	1:500-2000
	Immunohistochemistry (IHC):	1:50-400
	ELISA:	1:100-1000
	(Boiling the paraffin sections in 10mM citrate buffer, pH6.0, or PH8.0 EDTA repair liquid for 20 mins is required for the staining of formalin/paraffin sections.) Optimal working dilutions must be determined by end user.	

## Storage

12 months from date of receipt, -20°C as supplied.

## Background Information

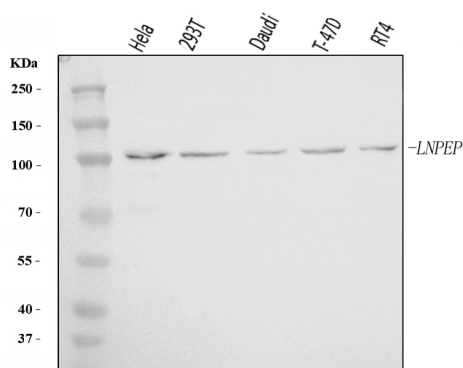
Leucyl/cystinyl aminopeptidase, also known as cystinyl aminopeptidase (CAP), insulin-regulated aminopeptidase (IRAP), human placental leucine aminopeptidase (PLAP), oxytocinase, and vasopressinase, is an enzyme of the aminopeptidase group that in humans is encoded by the LNPEP gene. This gene encodes a zinc-dependent aminopeptidase that cleaves vasopressin, oxytocin, lys-bradykinin, met-enkephalin, dynorphin A and other peptide hormones. The protein can be secreted in maternal serum, reside in intracellular vesicles with the insulin-responsive glucose transporter GLUT4, or form a type II integral membrane glycoprotein. The protein catalyzes the final step in the conversion of angiotensinogen to angiotensin IV (AT4) and is also a receptor for AT4. Alternative splicing results in multiple transcript variants encoding

different isoforms.

## Reference

Anti-LNPEP Antibody被引用在1文献中。

## Selected Validation Data



Western blot analysis of LNPEP using anti-LNPEP antibody (A05092-1). The sample well of each lane was loaded with 30 ug of sample under reducing conditions.

Lane 1: HeLa whole cell lysates,

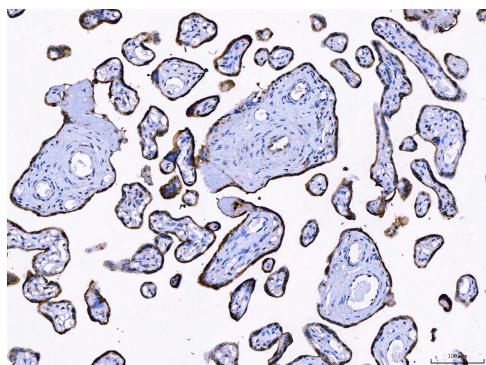
Lane 2: 293T whole cell lysates,

Lane 3: Daudi whole cell lysates,

Lane 4: T-47D whole cell lysates,

Lane 5: RT4 whole cell lysates.

After electrophoresis, proteins were transferred to a membrane. Then the membrane was incubated with rabbit anti-LNPEP antigen affinity purified polyclonal antibody (A05092-1) at a dilution of 1:1000 and probed with a goat anti-rabbit IgG-HRP secondary antibody (Catalog # BA1054). The signal is developed using ECL Plus Western Blotting Substrate (Catalog # AR1197). A specific band was detected for LNPEP at approximately 117 kDa. The expected band size for LNPEP is at 117 kDa.



IHC analysis of LNPEP using anti-LNPEP antibody (A05092-1). LNPEP was detected in a paraffin-embedded section of human placenta tissue. The tissue section was incubated with rabbit anti-LNPEP Antibody (A05092-1) at a dilution of 1:200 and developed using HRP Conjugated Rabbit IgG Super Vision Assay Kit (Catalog # SV0002) with DAB (Catalog # AR1027) as the chromogen.

Product datasheet

## Anti-LNPEP Antibody

Catalog Number: **A05092-1**

**BOSTER**<sup>®</sup>

antibody and ELISA experts

**BOSTER BIOLOGICAL TECHNOLOGY**

Building C21, 3rd to 5th Floors, Optics Valley Biopharmaceutical Accelerator,  
East Lake High-Tech Development Zone, Wuhan.

**Web:** [www.boster.com](http://www.boster.com) **Phone:** 027-67845390/1/2 **Email:** [boster@boster.com](mailto:boster@boster.com)