

## Basic Information

Product Name	Anti-Calmegin/CLGN Antibody	
Gene Name	CLGN	
Source	Rabbit	
Clonality	Polyclonal	
Isotype	IgG	
Species Reactivity	human, mouse, rat	
Tested Application	WB, IHC, FCM, ELISA	
Contents	500 ug/ml antibody with PBS, 0.02% NaN <sub>3</sub> , 1 mg/ml BSA and 50% glycerol.	
Immunogen	E.coli-derived human Calmegin/CLGN recombinant protein (Position: E36-D610).	
Concentration	500 ug/ml	
Purification	Immunogen affinity purified.	
Observed MW	95 kDa	
Dilution Ratios	Western blot (WB): 1:500-2000 Immunohistochemistry (IHC): 1:50-400 Flow Cytometry (Fixed): 1:50-200 Enzyme linked immunosorbent assay (ELISA): 1:100-1000 (Boiling the paraffin sections in 10mM citrate buffer, pH6.0, or PH8.0 EDTA repair liquid for 20 mins is required for the staining of formalin/paraffin sections.) Optimal working dilutions must be determined by end user.	

## Storage

12 months from date of receipt, -20°C as supplied.

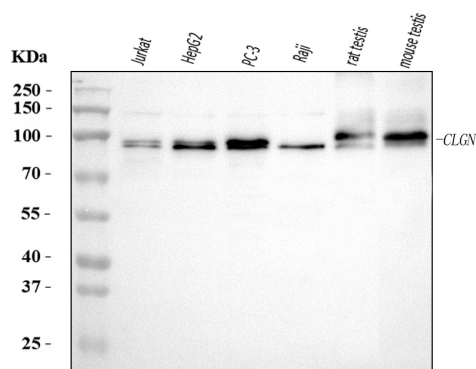
## Background Information

Calmegin, also known as CLGN, is a protein which in humans is encoded by the CLGN gene. Calmegin is a testis-specific endoplasmic reticulum chaperone protein. CLGN may play a role in spermatogenesis and infertility.

## Reference

Anti-Calmegin/CLGN Antibody 被引用在1文献中。

## Selected Validation Data



Western blot analysis of Calmegin/CLGN using anti-Calmegin/CLGN antibody (A05261-1). The sample well of each lane was loaded with 30 ug of sample under reducing conditions.

Lane 1: Jurkat whole cell lysates,

Lane 2: HepG2 whole cell lysates,

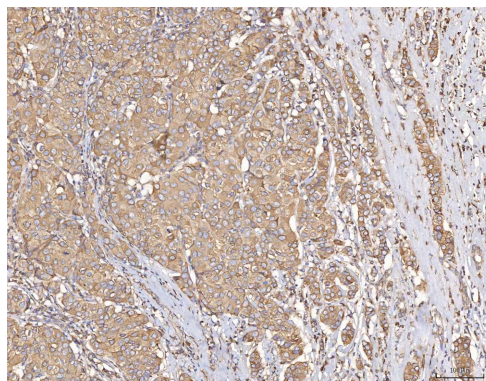
Lane 3: PC-3 whole cell lysates,

Lane 4: Raji whole cell lysates,

Lane 5: rat testis tissue lysates,

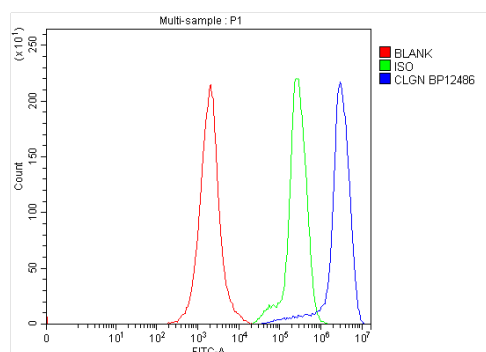
Lane 6: mouse testis tissue lysates.

After electrophoresis, proteins were transferred to a membrane. Then the membrane was incubated with rabbit anti-Calmegin/CLGN antigen affinity purified polyclonal antibody (A05261-1) at a dilution of 1:1000 and probed with a goat anti-rabbit IgG-HRP secondary antibody (Catalog # BA1054). The signal is developed using ECL Plus Western Blotting Substrate (Catalog # AR1197). A specific band was detected for Calmegin/CLGN at approximately 95 kDa. The expected band size for Calmegin/CLGN is at 70 kDa.



IHC analysis of Calmegin/CLGN using anti-Calmegin/CLGN antibody (A05261-1).

Calmegin/CLGN was detected in a paraffin-embedded section of human mammary cancer tissue. The tissue section was incubated with rabbit anti-Calmegin/CLGN Antibody (A05261-1) at a dilution of 1:200 and developed using HRP Conjugated Rabbit IgG Super Vision Assay Kit (Catalog # SV0002) with DAB (Catalog # AR1027) as the chromogen.



Flow Cytometry analysis of Jurkat cells using anti-Calmegin/CLGN antibody (A05261-1).

Overlay histogram showing Jurkat cells stained with A05261-1 (Blue line).

To facilitate intracellular staining, cells were fixed with 4% paraformaldehyde and permeabilized with permeabilization buffer. The cells were blocked with 10% normal goat serum. And then incubated with rabbit anti-Calmegin/CLGN Antibody (A05261-1) at 1:100 dilution for 30 min at 20°C. DyLight®488 conjugated goat anti-rabbit IgG (BA1127) was used as secondary antibody at 1:100 dilution for 30 minutes at 20°C. Isotype control antibody (Green line) was rabbit IgG at 1:100 dilution used

under the same conditions. Unlabelled sample without incubation with primary antibody and secondary antibody (Red line) was used as a blank control.