

Basic Information

Product Name	Anti-BCL9L Antibody	
Gene Name	BCL9L	
Source	Rabbit	
Clonality	Polyclonal	
Isotype	IgG	
Species Reactivity	human, mouse, rat	
Tested Application	WB, IHC, ICC/IF, FCM, ELISA	
Contents	500 ug/ml antibody with PBS, 0.02% NaN ₃ , 1 mg/ml BSA and 50% glycerol.	
Immunogen	E.coli-derived human BCL9L recombinant protein (Position: E397-A666).	
Concentration	500 ug/ml	
Purification	Immunogen affinity purified.	
Observed MW	200 kDa	
Dilution Ratios	Western blot (WB): 1:500-2000 Immunohistochemistry (IHC): 1:50-400 Immunocytochemistry/Immunofluorescence (ICC/IF): 1:50-400 Flow Cytometry (Fixed): 1:50-200 Enzyme linked immunosorbent assay (ELISA): 1:100-1000 (Boiling the paraffin sections in 10mM citrate buffer, pH6.0, or PH8.0 EDTA repair liquid for 20 mins is required for the staining of formalin/paraffin sections.) Optimal working dilutions must be determined by end user.	

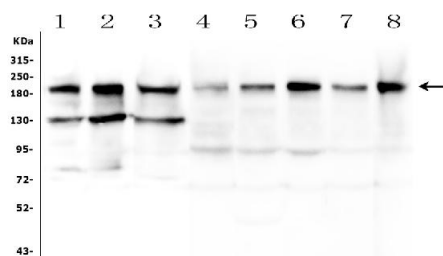
Storage

12 months from date of receipt, -20°C as supplied.

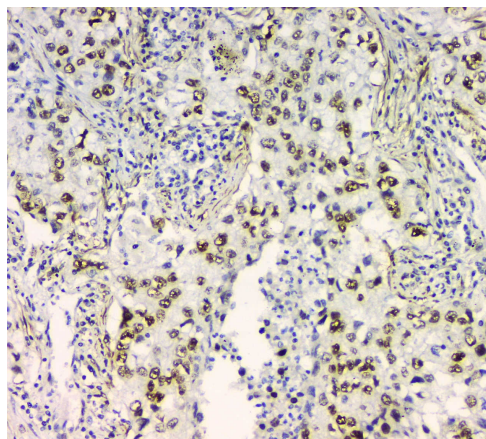
Background Information

B-cell CLL/lymphoma 9 like is a protein that in humans is encoded by the BCL9L gene. It is mapped to 11q23.3. Bcl-9 (B-cell lymphoma 9; also Protein legless homolog) is a transcriptional regulator that belongs to the Bcl-9 family of proteins. It is expressed in multiple tissues and serves to recruit Pygopus to the Wnt-pathway beta -catenin-TCF complex in the nucleus. Bcl-9 and Bcl-9-2 are considered evolutionary duplicates of Legless that perform the same task with different regulation. Human Bcl-9 is 1426 amino acids (aa) in length. It contains one phosphothreonine and three phosphoserine sites that have been identified so far, two poly-Pro regions (aa 514 517 and 970 973), and one poly-Ala segment (aa 900 903). There is one potential alternate start site at Met27, and a variant isoform exists that shows a four aa substitution for aa 1391 1426. Over aa 1009 1328, human Bcl-9 is 96% aa identical to mouse Bcl-9.

Selected Validation Data



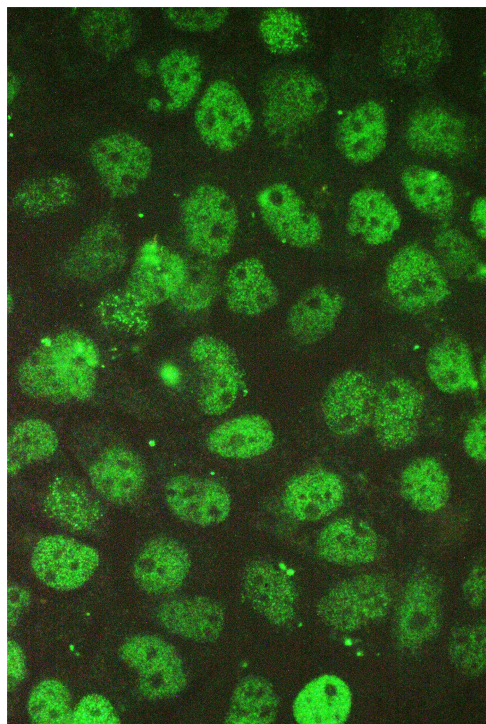
Western blot analysis of BCL9L using anti-BCL9L antibody (A05905). The sample well of each lane was loaded with 50ug of sample under reducing conditions. Lane 1: human Hela whole cell lysates, Lane 2: human T-47D whole cell lysates, Lane 3: human PANC-1 whole cell lysates, Lane 4: rat testicular issue lysates, Lane 5: rat liver issue lysates, Lane 6: mouse testicular issue lysates, Lane 7: mouse thymus issue lysates, Lane 8: mouse HEPA1-6 whole cell lysates. anti-BCL9L antigen affinity purified polyclonal antibody (Catalog # A05905) probed with a goat anti-rabbit IgG-HRP secondary antibody. The signal is developed using an Enhanced Chemiluminescent detection (ECL) kit (Catalog # EK1002). A specific band was detected for BCL9L at approximately 200KD. The expected band size for BCL9L is at 157KD.



Western blot analysis of BCL9L using anti-BCL9L antibody (A05905). The sample well of each lane was loaded with 30 ug of sample under reducing conditions.

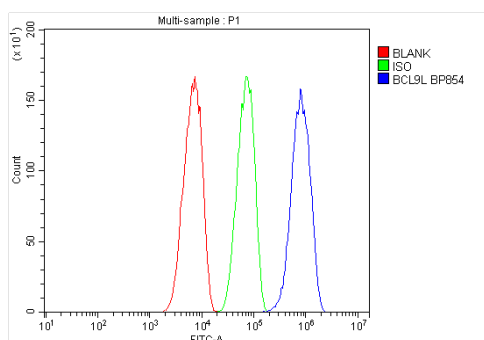
Lane 1: human Hela whole cell lysates,
Lane 2: human T-47D whole cell lysates,
Lane 3: human PANC-1 whole cell lysates,
Lane 4: rat testicular issue lysates,
Lane 5: rat liver issue lysates,
Lane 6: mouse testicular issue lysates,
Lane 7: mouse thymus issue lysates,
Lane 8: mouse HEPA1-6 whole cell lysates.

After electrophoresis, proteins were transferred to a membrane. Then the membrane was incubated with rabbit anti-BCL9L antigen affinity purified polyclonal antibody (A05905) at a dilution of 1:1000 and probed with a goat anti-rabbit IgG-HRP secondary antibody (Catalog # BA1054). The signal is developed using ECL Plus Western Blotting Substrate (Catalog # AR1197). A specific band was detected for BCL9L at approximately 200 kDa. The expected band size for BCL9L is at 157 kDa.



IHC analysis of BCL9L using anti-BCL9L antibody (A05905).

BCL9L was detected in a paraffin-embedded section of mouse kidney tissue. Biotinylated goat anti-rabbit IgG was used as secondary antibody. The tissue section was incubated with rabbit anti-BCL9L Antibody (A05905) at a dilution of 1:200 and developed using Streptavidin-Biotin-Complex (SABC) (Catalog # SA1022) with DAB (Catalog # AR1027) as the chromogen.



IF analysis of BCL9L using anti- BCL9L antibody (A05905).

BCL9L was detected in immunocytochemical section of A431 cell. Enzyme antigen retrieval was performed using IHC enzyme antigen retrieval reagent (AR0022) rabbit anti- BCL9L Antibody (A05905) . DyLight488 Conjugated Goat Anti-Rabbit IgG (BA1127) was used as secondary antibody The section was counterstained with DAPI. Visualize using a fluorescence microscope and filter sets appropriate for the label used.