

Basic Information

Product Name	Anti-PPP2R5A Antibody	
Gene Name	PPP2R5A	
Source	Rabbit	
Clonality	Polyclonal	
Isotype	IgG	
Species Reactivity	human	
Tested Application	WB, ICC/IF, ELISA	
Contents	500 ug/ml antibody with PBS, 0.02% NaN ₃ , 1 mg/ml BSA and 50% glycerol.	
Immunogen	E.coli-derived human PPP2R5A recombinant protein (Position: Q50-R441).	
Concentration	500 ug/ml	
Purification	Immunogen affinity purified.	
Observed MW	56 kDa	
Dilution Ratios	Western blot (WB):	1:500-2000
	Immunocytochemistry/Immunofluorescence (ICC/IF):	1:50-400
	Enzyme linked immunosorbent assay (ELISA):	1:100-1000

Storage

12 months from date of receipt, -20°C as supplied.

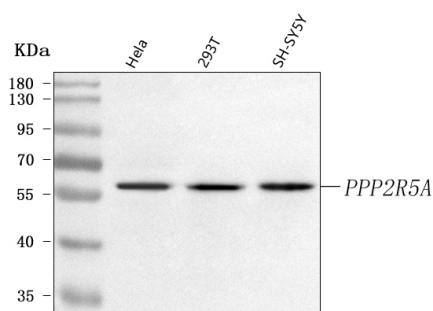
Background Information

Serine/threonine-protein phosphatase 2A 56 kDa regulatory subunit alpha isoform is an enzyme that in humans is encoded by the PPP2R5A gene. The product of this gene belongs to the phosphatase 2A regulatory subunit B family. Protein phosphatase 2A is one of the four major Ser/Thr phosphatases, and it is implicated in the negative control of cell growth and division. It consists of a common heteromeric core enzyme, which is composed of a catalytic subunit and a constant regulatory subunit, that associates with a variety of regulatory subunits. The B regulatory subunit might modulate substrate selectivity and catalytic activity. This gene encodes an alpha isoform of the regulatory subunit B56 subfamily. Alternative transcript variants encoding distinct isoforms have been found for this gene.

Reference

Anti-PPP2R5A Antibody被引用在1文献中。

Selected Validation Data



Western blot analysis of anti-PPP2R5A antibody (A05935-2). The sample well of each lane was loaded with 30 ug of sample under reducing conditions.

Lane 1: human HeLa whole cell lysates,

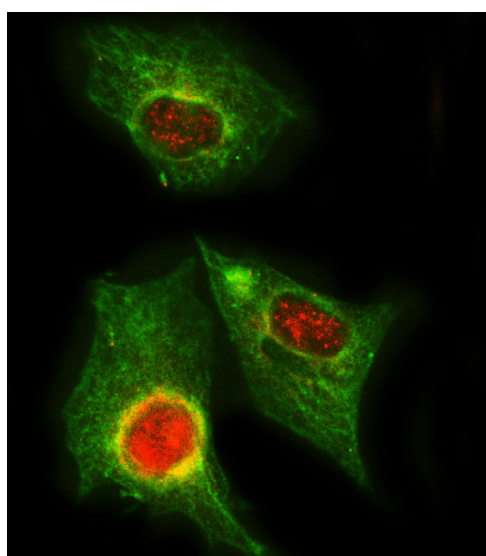
Lane 2: human 293T whole cell lysates,

Lane 3: human SH-SY5Y whole cell lysates.

After electrophoresis, proteins were transferred to a membrane.

Then the membrane was incubated with rabbit anti-PPP2R5A antigen affinity purified polyclonal antibody (A05935-2) and probed with a goat anti-rabbit IgG-HRP secondary antibody (Catalog # BA1054).

The signal is developed using ECL Plus Western Blotting Substrate (Catalog # AR1197). A specific band was detected for PPP2R5A at approximately 56 kDa. The expected band size for PPP2R5A is at 56 kDa.



ICC/IF analysis of PPP2R5A using anti-PPP2R5A antibody (A05935-2) and anti-Beta Tubulin antibody (M01857-3).

PPP2R5A was detected in an immunocytochemical section of A549 cells. Cy3-conjugated Anti-rabbit IgG Secondary Antibody (red)(Catalog#BA1032) and Fluoro488-conjugated Anti-mouse IgG Secondary Antibody (Green) (Catalog # BA1126) were used as secondary antibody.