

Basic Information

Product Name	Anti-Cytokeratin 15/KRT15 Antibody	
Gene Name	KRT15	
Source	Rabbit	
Clonality	Polyclonal	
Isotype	IgG	
Species Reactivity	human, mouse, rat	
Tested Application	WB, IHC, IP, FCM, ELISA	
Contents	500 ug/ml antibody with PBS, 0.02% NaN ₃ , 1 mg BSA and 50% glycerol.	
Immunogen	E.coli-derived human KRT15 recombinant protein (Position: L240-K453).	
Concentration	500 ug/ml	
Purification	Immunogen affinity purified.	
Observed MW	49 kDa	
Dilution Ratios	Western blot (WB):	1:500-2000
	Immunohistochemistry (IHC):	1:50-400
	ImmunoPrecipitation (IP):	1:50
	Flow Cytometry (FCM):	1-3 µg/1x10 ⁶ cells
	Enzyme linked immunosorbent assay (ELISA):	1:100-1000
	(Boiling the paraffin sections in 10mM citrate buffer,pH6.0,or PH8.0 EDTA repair liquid for 20 mins is required for the staining of formalin/paraffin sections.) Optimal working dilutions must be determined by end user.	

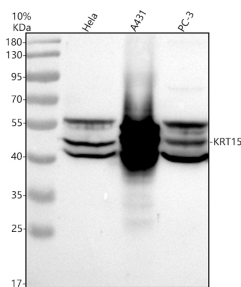
Storage

12 months from date of receipt, -20°C as supplied.

Background Information

Keratins are a large family of proteins that form the intermediate filament cytoskeleton of epithelial cells, which are classified into two major sequence types. Type I keratins are a group of acidic intermediate filament proteins, including K9-K23, and the hair keratins Ha1-Ha8. Type II keratins are the basic or neutral counterparts to the acidic type I keratins, including K1-K8, and the hair keratins, Hb1-Hb6. Keratin 15 is a type I cytokeratin. It is found in some progenitor basal cells within complex epithelia.

Selected Validation Data



Western blot analysis of Cytokeratin 15/KRT15 using anti-Cytokeratin 15/KRT15 antibody (A06791-4). The sample well of each lane was loaded with 30 ug of sample under reducing conditions.

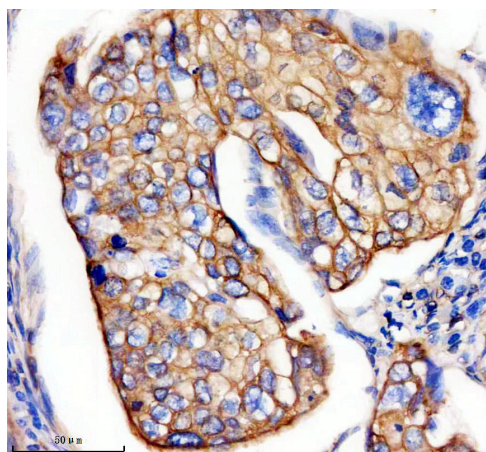
Lane 1: human Hela whole cell lysates,

Lane 2: human A431 whole cell lysates,

Lane 3: human PC-3 whole cell lysates.

After electrophoresis, proteins were transferred to a membrane.

Then the membrane was incubated with rabbit anti-Cytokeratin 15/KRT15 antigen affinity purified polyclonal antibody (A06791-4) at a dilution of 1:1000 and probed with a goat anti-rabbit IgG-HRP secondary antibody (Catalog # BA1054). The signal is developed using ECL Plus Western Blotting Substrate (Catalog # AR1197). A specific band was detected for Cytokeratin 15/KRT15 at approximately 49 kDa. The expected band size for Cytokeratin 15/KRT15 is at 49 kDa.



IHC analysis of Cytokeratin 15/KRT15 using anti-Cytokeratin 15/KRT15 antibody (A06791-4).

Cytokeratin 15/KRT15 was detected in a paraffin-embedded section of human cervical cancer tissue. The tissue section was incubated with rabbit anti-Cytokeratin 15/KRT15 Antibody (A06791-4) at a dilution of 1:200 and developed using HRP Conjugated Rabbit IgG Super Vision Assay Kit (Catalog # SV0002) with DAB (Catalog # AR1027) as the chromogen.