

Basic Information

Product Name	Anti-METTL14 Antibody	
Gene Name	METTL14	
Source	Rabbit	
Clonality	Polyclonal	
Isotype	IgG	
Species Reactivity	human	
Tested Application	WB, IHC, ICC/IF, IP, FCM, ELISA	
Contents	500 ug/ml antibody with PBS, 0.02% NaN3, 1 mg/ml BSA and 50% glycerol.	
Immunogen	E.coli-derived human METTL14 recombinant protein (Position: Q12-D350).	
Concentration	500 ug/ml	
Purification	Immunogen affinity purified.	
Observed MW	65 kDa	
Dilution Ratios	Western blot (WB):	1:500-2000
	Immunohistochemistry (IHC):	1:50-400
	Immunocytochemistry/Immunofluorescence (ICC/IF):	1:50-400
	ImmunoPrecipitation (IP):	1:250-300
	Flow Cytometry (Fixed):	1:50-200
	Enzyme linked immunosorbent assay (ELISA):	1:100-1000
	(Boiling the paraffin sections in 10mM citrate buffer,pH6.0,or PH8.0 EDTA repair liquid for 20 mins is required for the staining of formalin/paraffin sections.) Optimal working dilutions must be determined by end user.	

Storage

12 months from date of receipt, -20°C as supplied.

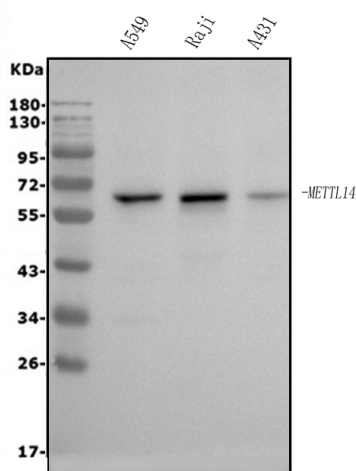
Background Information

Methyltransferase like 14 is a protein that in humans is encoded by the METTL14 gene. METTL14 is part of a methyltransferase complex required for the common N6-methyladenosine (m6A) base modification that is enriched near stop codons and in long exons of mRNAs.

Reference

Anti-METTL14 Antibody被引用在3文献中。

Selected Validation Data



Western blot analysis of METTL14 using anti-METTL14 antibody (A07389-2). The sample well of each lane was loaded with 30 ug of sample under reducing conditions.

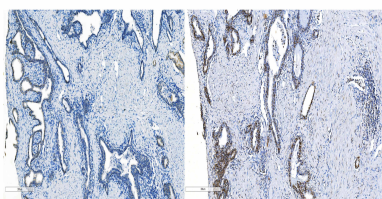
Lane 1: human A549 whole cell lysates,

Lane 2: human Raji whole cell lysates,

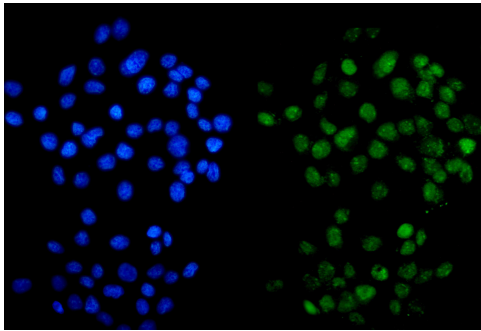
Lane 3: human A431 whole cell lysates.

After electrophoresis, proteins were transferred to a membrane.

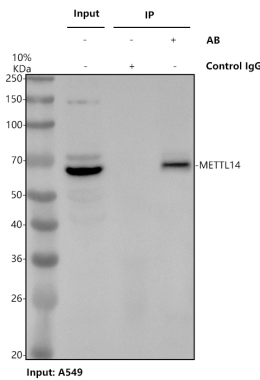
Then the membrane was incubated with rabbit anti-METTL14 antigen affinity purified polyclonal antibody (A07389-2) at a dilution of 1:1000 and probed with a goat anti-rabbit IgG-HRP secondary antibody (Catalog # BA1054). The signal is developed using ECL Plus Western Blotting Substrate (Catalog # AR1197). A specific band was detected for METTL14 at approximately 65 kDa. The expected band size for METTL14 is at 52 kDa.



IHC analysis of METTL14 using anti-METTL14 antibody (A07389-2). METTL14 was detected in a paraffin-embedded section of human breast cancer tissue. Biotinylated goat anti-rabbit IgG was used as secondary antibody. The tissue section was incubated with rabbit anti-METTL14 Antibody (A07389-2) at a dilution of 1:200 and developed using Streptavidin-Biotin-Complex (SABC) (Catalog # SA1022) with DAB (Catalog # AR1027) as the chromogen.



ICC/IF analysis of METTL14 using anti-METTL14 antibody (A07389-2). METTL14 was detected in an immunocytochemical section of A431 cells. The section was incubated with rabbit anti-METTL14 Antibody (A07389-2) at a dilution of 1:100. Fluoro488 Conjugated Goat Anti-Rabbit IgG (Green) (Catalog # BA1127) was used as secondary antibody. The section was counterstained with DAPI (Catalog # AR1176) (Blue).



IP analysis of METTL14 using anti-METTL14 antibody (A07389-2) in A549 whole cell lysate.

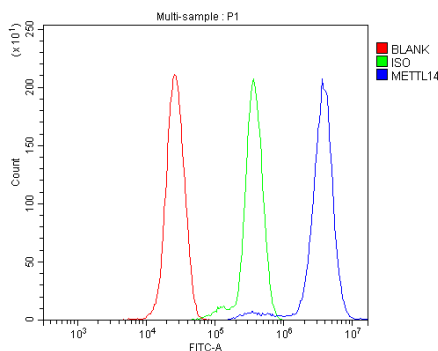
Western blot analysis of METTL14 using anti- METTL14 antibody (A07389-2).

Lane 1: A549 whole cell lysates(30ug),

Lane 2: Rabbit control IgG instead of anti- METTL14 antibody in A549 whole cell lysate,

Lane 3: anti- METTL14 antibody (2μg) + A549 whole cell lysate (500μg).

After electrophoresis, proteins were transferred to a membrane. Then the membrane was incubated with rabbit anti- METTL14 antigen affinity purified polyclonal antibody (A07389-2) at a dilution of 1:1000 and probed with a mouse anti-rabbit IgG-HRP secondary antibody (Catalog # BM2007). The signal is developed using ECL Plus Western Blotting Substrate (Catalog # AR1197). A specific band was detected for METTL14 at approximately 65 kDa. The expected band size for METTL14 is at 52 kDa.



Flow Cytometry analysis of THP-1 cells using anti-METTL14 antibody (A07389-2).

Overlay histogram showing THP-1 cells stained with A07389-2 (Blue line). To facilitate intracellular staining, cells were fixed with 4% paraformaldehyde and permeabilized with permeabilization buffer. The cells were blocked with 10% normal goat serum. And then incubated with rabbit anti-METTL14 Antibody (A07389-2) at 1:100 dilution for 30 min at 20°C. Fluoro488 conjugated goat anti-rabbit IgG (BA1127) was used as secondary antibody at 1:100 dilution for 30 minutes at 20°C. Isotype control antibody (Green line) was rabbit

Product datasheet

Anti-METTL14 Antibody

Catalog Number: **A07389-2**

BOSTER[®]

antibody and ELISA experts

BOSTER BIOLOGICAL TECHNOLOGY

Building C21, 3rd to 5th Floors, Optics Valley Biopharmaceutical Accelerator,
East Lake High-Tech Development Zone, Wuhan.

Web: www.boster.com **Phone:** 027-67845390/1/2 **Email:** boster@boster.com

IgG at 1:100 dilution used under the same conditions. Unlabelled sample without incubation with primary antibody and secondary antibody (Red line) was used as a blank control.