

Basic Information

Product Name	Anti-UBC12/UBE2M Antibody	
Gene Name	UBE2M	
Source	Rabbit	
Clonality	Polyclonal	
Isotype	IgG	
Species Reactivity	human, mouse, rat	
Tested Application	WB, IHC, IF, ICC/IF, FCM, ELISA	
Contents	500 ug/ml antibody with PBS, 0.02% NaN ₃ , 1 mg/ml BSA and 50% glycerol.	
Immunogen	E.coli-derived human UBC12/UBE2M recombinant protein (Position: K25-Q154).	
Concentration	500 ug/ml	
Purification	Immunogen affinity purified.	
Observed MW	21 kDa	
Dilution Ratios	Western blot (WB): 1:500-2000 Immunohistochemistry (IHC): 1:50-400 Immunofluorescence (IF): 1:50-400 Immunocytochemistry/Immunofluorescence (ICC/IF): 1:50-400 Flow Cytometry (Fixed): 1:50-200 Enzyme linked immunosorbent assay (ELISA): 1:100-1000 (Boiling the paraffin sections in 10mM citrate buffer, pH6.0, or PH8.0 EDTA repair liquid for 20 mins is required for the staining of formalin/paraffin sections.) Optimal working dilutions must be determined by end user.	

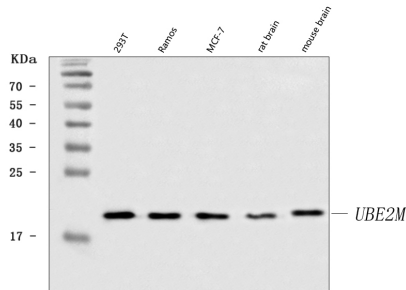
Storage

12 months from date of receipt, -20°C as supplied.

Background Information

NEDD8-conjugating enzyme Ubc12 is a protein that in humans is encoded by the UBE2M gene. The modification of proteins with ubiquitin is an important cellular mechanism for targeting abnormal or short-lived proteins for degradation. Ubiquitination involves at least three classes of enzymes: ubiquitin-activating enzymes, or E1s, ubiquitin-conjugating enzymes, or E2s, and ubiquitin-protein ligases, or E3s. This gene encodes a member of the E2 ubiquitin-conjugating enzyme family. The encoded protein is linked with a ubiquitin-like protein, NEDD8, which can be conjugated to cellular proteins, such as Cdc53/culin.

Selected Validation Data



Western blot analysis of UBC12/UBE2M using anti-UBC12/UBE2M antibody (A07478-1). The sample well of each lane was loaded with 30 ug of sample under reducing conditions.

Lane 1: human 293T whole cell lysates,

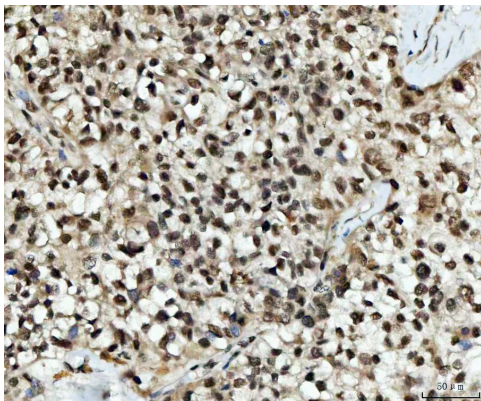
Lane 2: human Ramos whole cell lysates,

Lane 3: human MCF-7 whole cell lysates,

Lane 4: rat brain tissue lysates,

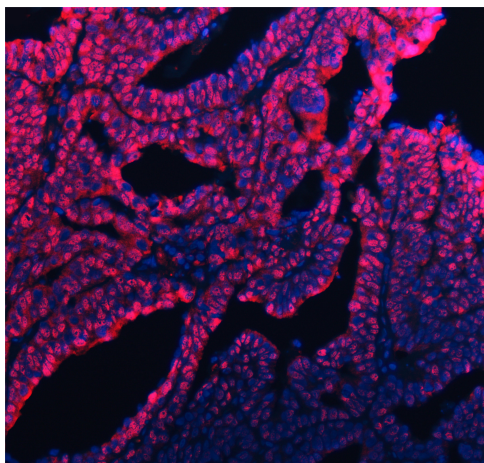
Lane 5: mouse brain tissue lysates.

After electrophoresis, proteins were transferred to a membrane. Then the membrane was incubated with rabbit anti-UBC12/UBE2M antigen affinity purified polyclonal antibody (A07478-1) at a dilution of 1:1000 and probed with a goat anti-rabbit IgG-HRP secondary antibody (Catalog # BA1054). The signal is developed using ECL Plus Western Blotting Substrate (Catalog # AR1197). A specific band was detected for UBC12/UBE2M at approximately 21 kDa. The expected band size for UBC12/UBE2M is at 21 kDa.

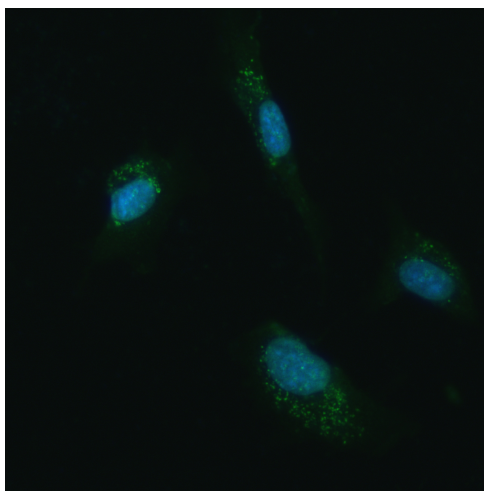


IHC analysis of UBC12/UBE2M using anti-UBC12/UBE2M antibody (A07478-1).

UBC12/UBE2M was detected in a paraffin-embedded section of human breast cancer tissue. The tissue section was incubated with rabbit anti-UBC12/UBE2M Antibody (A07478-1) at a dilution of 1:200 and developed using HRP Conjugated Rabbit IgG Super Vision Assay Kit (Catalog # SV0002) with DAB (Catalog # AR1027) as the chromogen.

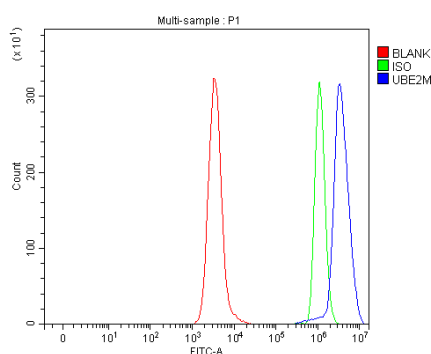


IF analysis using anti- UBE2M/UBC12 antibody (A07478-1). detected in paraffin-embedded section of human ovarian cancer tissue. The tissue section were stained using the DyLight550-conjugated Anti-rabbit IgG Secondary Antibody (red)(Catalog#BA1135) and counterstained with DAPI (blue).



IF analysis of UBC12/UBE2M using anti-UBC12/UBE2M antibody (A07478-1).

UBC12/UBE2M was detected in an immunocytochemical section of U87 cells. The section was incubated with rabbit anti-UBC12/UBE2M Antibody (A07478-1) at a dilution of 1:100. DyLight®488 Conjugated Goat Anti-Rabbit IgG (Green) (Catalog # BA1127) was used as secondary antibody. The section was counterstained with DAPI (Catalog # AR1176) (Blue).



Flow Cytometry analysis of Daudi cells using anti-UBC12/UBE2M antibody (A07478-1).

Overlay histogram showing Daudi cells stained with A07478-1 (Blue line). To facilitate intracellular staining, cells were fixed with 4% paraformaldehyde and permeabilized with permeabilization buffer. The cells were blocked with 10% normal goat serum. And then incubated with rabbit anti-UBC12/UBE2M Antibody (A07478-1) at 1:100 dilution for 30 min at 20°C. DyLight®488 conjugated goat anti-rabbit IgG (BA1127) was used as secondary antibody at 1:100 dilution for 30 minutes at 20°C. Isotype control antibody (Green line) was rabbit IgG at 1:100 dilution used under the same conditions. Unlabelled sample without incubation with primary antibody and secondary antibody (Red line) was used as a blank control.

Product datasheet

Anti-UBC12/UBE2M Antibody

Catalog Number: A07478-1



antibody and ELISA experts

BOSTER BIOLOGICAL TECHNOLOGY

Building C21, 3rd to 5th Floors, Optics Valley Biopharmaceutical Accelerator,
East Lake High-Tech Development Zone, Wuhan.

Web: www.boster.com **Phone:** 027-67845390/1/2 **Email:** boster@boster.com