

## Basic Information

Product Name	Anti-PACS2-Specific Antibody	
Gene Name	PACS2	
Source	Rabbit	
Clonality	Polyclonal	
Isotype	IgG	
Species Reactivity	human, mouse, rat	
Tested Application	WB, IHC, ICC/IF, ELISA	
Contents	500 ug/ml antibody with PBS, 0.02% NaN <sub>3</sub> , 1 mg BSA and 50% glycerol.	
Concentration	500 ug/ml	
Purification	Immunogen affinity purified.	
Observed MW	130 kDa	
Dilution Ratios	Western blot (WB): 1:500-2000 Immunohistochemistry (IHC): 1:50-400 Immunocytochemistry/Immunofluorescence (ICC/IF): 1:50-400 Enzyme linked immunosorbent assay (ELISA): 1:100-1000 (Boiling the paraffin sections in 10mM citrate buffer, pH6.0, or PH8.0 EDTA repair liquid for 20 mins is required for the staining of formalin/paraffin sections.) Optimal working dilutions must be determined by end user.	

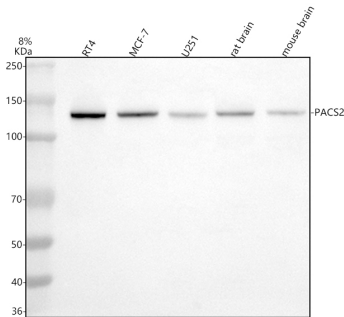
## Storage

12 months from date of receipt, -20°C as supplied.

## Background Information

PACS2 (phosphofurin acidic cluster sorting protein-2), PACS1L, is an 889 amino acid protein that localizes to both the mitochondrion and the lumen of the endoplasmic reticulum (ER) and belongs to the PACS family (1,2). It is expressed in a broad range of tissues with highest expression in skeletal muscle, brain, heart, testis and pancreas (2,). PACS2 interacts with Polycystin-2 and BID and functions as a sorting protein that regulates mitochondria-ER communication and is thought to be involved in ion channel trafficking, specifically direct cluster-containing ion channels to distinct subcellular compartments (3-5).

## Selected Validation Data



Western blot analysis of PACS2 using anti-PACS2 antibody (A08193-1).

The sample well of each lane was loaded with 30 ug of sample under reducing conditions.

Lane 1: human RT4 whole cell lysates,

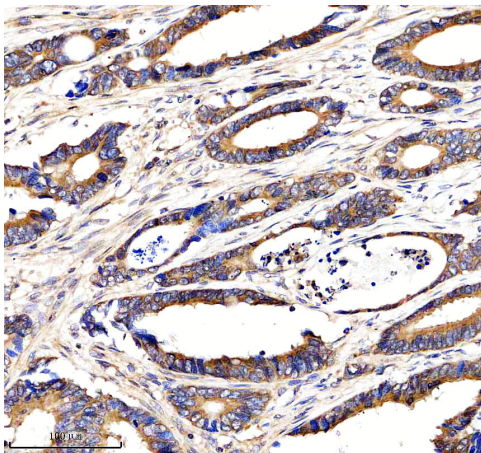
Lane 2: human MCF-7 whole cell lysates,

Lane 3: human U251 whole cell lysates,

Lane 4: rat brain tissue lysates,

Lane 5: mouse brain tissue lysates.

After electrophoresis, proteins were transferred to a membrane. Then the membrane was incubated with rabbit anti-PACS2 antigen affinity purified polyclonal antibody (A08193-1) at a dilution of 1:1000 and probed with a goat anti-rabbit IgG-HRP secondary antibody (Catalog # BA1054). The signal is developed using ECL Plus Western Blotting Substrate (Catalog # AR1197). A specific band was detected for PACS2 at approximately 130 kDa. The expected band size for PACS2 is at 98 kDa.



IHC analysis of PACS2 using anti-PACS2 antibody (A08193-1).

PACS2 was detected in a paraffin-embedded section of human colon cancer tissue. The tissue section was incubated with rabbit anti-PACS2 Antibody (A08193-1) at a dilution of 1:200 and developed using HRP Conjugated Rabbit IgG Super Vision Assay Kit (Catalog # SV0002) with DAB (Catalog # AR1027) as the chromogen.