

Basic Information

Product Name	Anti-RORB Antibody	
Gene Name	RORB	
Source	Rabbit	
Clonality	Polyclonal	
Isotype	IgG	
Species Reactivity	human, mouse, rat	
Tested Application	WB, FCM, ELISA	
Contents	500 ug/ml antibody with PBS, 0.02% NaN ₃ , 1 mg/ml BSA and 50% glycerol.	
Immunogen	E.coli-derived human ROR beta/RORB recombinant protein (Position: M1-K470).	
Concentration	500 ug/ml	
Purification	Immunogen affinity purified.	
Observed MW	53 kDa	
Dilution Ratios	Western blot (WB):	1:500-2000
	Flow Cytometry (Fixed):	1:50-200
	Enzyme linked immunosorbent assay (ELISA):	1:100-1000

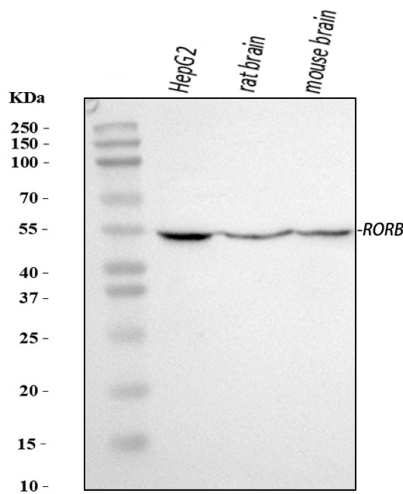
Storage

12 months from date of receipt, -20°C as supplied.

Background Information

RAR-related orphan receptor beta (ROR-beta), also known as NR1F2 (nuclear receptor subfamily 1, group F, member 2) is a nuclear receptor that in humans is encoded by the RORB gene. The protein encoded by this gene is a member of the NR1 subfamily of nuclear hormone receptors. It is a DNA-binding protein that can bind as a monomer or as a homodimer to hormone response elements upstream of several genes to enhance the expression of those genes. The encoded protein has been shown to interact with NM23-2, a nucleoside diphosphate kinase involved in organogenesis and differentiation, and to help regulate the expression of some genes involved in circadian rhythm.

Selected Validation Data



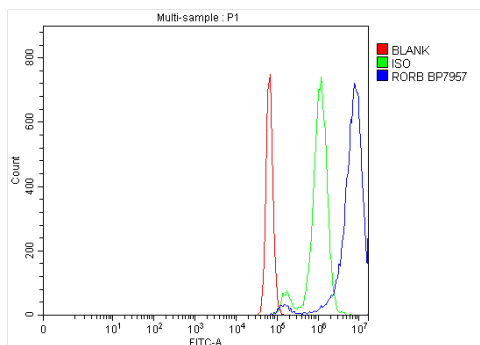
Western blot analysis of RORB using anti-RORB antibody (A09711-3). The sample well of each lane was loaded with 30 ug of sample under reducing conditions.

Lane 1: HEPG2 whole cell lysates,

Lane 2: rat brain tissue lysates,

Lane 3: mouse brain tissue lysates.

After electrophoresis, proteins were transferred to a membrane. Then the membrane was incubated with rabbit anti-RORB antigen affinity purified polyclonal antibody (A09711-3) at a dilution of 1:1000 and probed with a goat anti-rabbit IgG-HRP secondary antibody (Catalog # BA1054). The signal is developed using ECL Plus Western Blotting Substrate (Catalog # AR1197). A specific band was detected for RORB at approximately 53 kDa. The expected band size for RORB is at 53 kDa.



Flow Cytometry analysis of Neuro-2a cells using anti-RORB antibody (A09711-3).

Overlay histogram showing Neuro-2a cells stained with A09711-3 (Blue line). To facilitate intracellular staining, cells were fixed with 4% paraformaldehyde and permeabilized with permeabilization buffer. The cells were blocked with 10% normal goat serum. And then incubated with rabbit anti-RORB Antibody (A09711-3) at 1:100 dilution for 30 min at 20°C. DyLight®488 conjugated goat anti-rabbit IgG (BA1127) was used as secondary antibody at 1:100 dilution for 30 minutes at 20°C. Isotype control antibody (Green line) was rabbit IgG at 1:100 dilution used under the same conditions. Unlabelled sample without incubation with primary antibody and secondary antibody (Red line) was used as a blank control.