

Basic Information

Product Name	Anti-IMPG2 Antibody	
Gene Name	IMPG2	
Source	Rabbit	
Clonality	Polyclonal	
Isotype	IgG	
Species Reactivity	human, mouse, rat	
Tested Application	WB, IHC, ELISA	
Contents	500 ug/ml antibody with PBS, 0.02% NaN ₃ , 1 mg/ml BSA and 50% glycerol.	
Immunogen	E.coli-derived human IMPG2 recombinant protein (Position: R81-R1080).	
Concentration	500 ug/ml	
Purification	Immunogen affinity purified.	
Observed MW	150 kDa	
Dilution Ratios	Western blot (WB): 1:500-2000 Immunohistochemistry (IHC): 1:50-400 Enzyme linked immunosorbent assay (ELISA): 1:100-1000 (Boiling the paraffin sections in 10mM citrate buffer,pH6.0,or PH8.0 EDTA repair liquid for 20 mins is required for the staining of formalin/paraffin sections.) Optimal working dilutions must be determined by end user.	

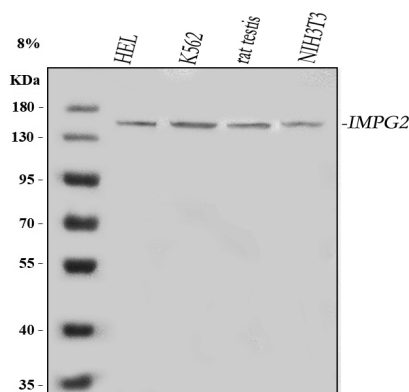
Storage

12 months from date of receipt, -20°C as supplied. 6 months 2 to 8°C after reconstitution. Avoid repeated freezing and thawing.

Background Information

The protein encoded by this gene binds chondroitin sulfate and hyaluronan and is a proteoglycan. The encoded protein plays a role in the organization of the interphotoreceptor matrix and may promote the growth and maintenance of the light-sensitive photoreceptor outer segment. Defects in this gene are a cause of retinitis pigmentosa type 56 and maculopathy, IMPG2-related.

Selected Validation Data



Western blot analysis of anti-IMPG2 antibody (A10288-1). The sample well of each lane was loaded with 30 ug of sample under reducing conditions.

Lane 1: human HEL whole cell lysates,

Lane 2: human K562 whole cell lysates,

Lane 3: rat testis tissue lysates,

Lane 4: mouse NIH/3T3 whole cell lysates.

After electrophoresis, proteins were transferred to a membrane.

Then the membrane was incubated with rabbit anti-IMPG2 antigen

affinity purified polyclonal antibody (A10288-1) and probed with a

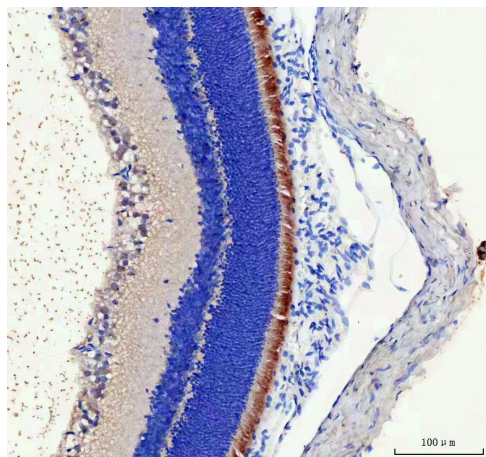
goat anti-rabbit IgG-HRP secondary antibody (Catalog # BA1054).

The signal is developed using ECL Plus Western Blotting Substrate

(Catalog # AR1197). A specific band was detected for IMPG2 at

approximately 150 kDa. The expected band size for IMPG2 is at 139

kDa.



IHC analysis of IMPG2 using anti-IMPG2 antibody (A10288-1).

IMPG2 was detected in a paraffin-embedded section of rat retina

tissue. The tissue section was developed using HRP Conjugated

Rabbit IgG Super Vision Assay Kit (Catalog # SV0002) with DAB

(Catalog # AR1027) as the chromogen.