

Basic Information

Product Name	Anti-RBM41 Antibody	
Gene Name	RBM41	
Source	Rabbit	
Clonality	Polyclonal	
Isotype	IgG	
Species Reactivity	human, mouse, rat	
Tested Application	WB, FCM, ELISA	
Contents	500 ug/ml antibody with PBS, 0.02% NaN3, 1 mg/ml BSA and 50% glycerol.	
Immunogen	E.coli-derived human RBM41 recombinant protein (Position: E130-F384).	
Concentration	500 ug/ml	
Purification	Immunogen affinity purified.	
Observed MW	47 kDa	
Dilution Ratios	Western blot (WB):	1:500-2000
	Flow Cytometry (Fixed):	1:50-200
	Enzyme linked immunosorbent assay (ELISA):	1:100-1000

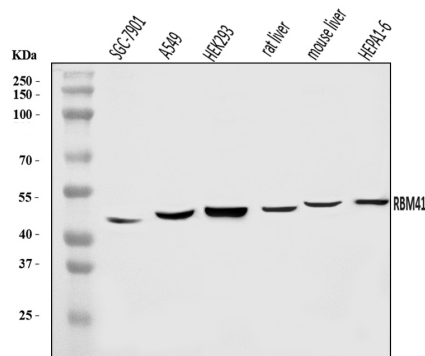
Storage

12 months from date of receipt, -20°C as supplied.

Background Information

RBM41 is an RNA-binding protein of unknown specific function. The human gene is mapped to Xq22.3.

Selected Validation Data



Western blot analysis of RBM41 using anti-RBM41 antibody

(A14311-1). The sample well of each lane was loaded with 30 ug of sample under reducing conditions.

Lane 1: SGC-7901 whole cell lysates,

Lane 2: A549 whole cell lysates,

Lane 3: HEK293 whole cell lysates,

Lane 4: rat liver tissue lysates,

Lane 5: mouse liver tissue lysates,

Lane 6: HEPA1-6 whole cell lysates.

After electrophoresis, proteins were transferred to a membrane.

Then the membrane was incubated with rabbit anti-RBM41 antigen

affinity purified polyclonal antibody (A14311-1) at a dilution of

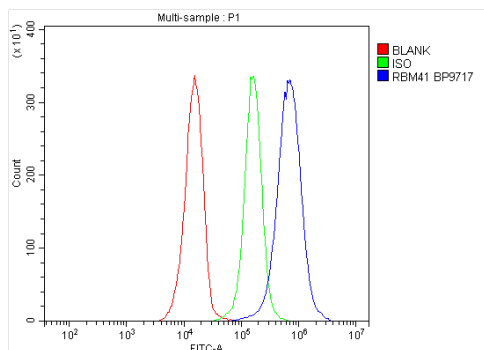
1:1000 and probed with a goat anti-rabbit IgG-HRP secondary

antibody (Catalog # BA1054). The signal is developed using ECL Plus

Western Blotting Substrate (Catalog # AR1197). A specific band was

detected for RBM41 at approximately 47 kDa. The expected band

size for RBM41 is at 47 kDa.



Flow Cytometry analysis of Jurkat cells using anti-RBM41 antibody (A14311-1).

Overlay histogram showing Jurkat cells stained with A14311-1 (Blue line). To facilitate intracellular staining, cells were fixed with 4% paraformaldehyde and permeabilized with permeabilization buffer.

The cells were blocked with 10% normal goat serum. And then

incubated with rabbit anti-RBM41 Antibody (A14311-1) at 1:100

dilution for 30 min at 20°C. Fluoro488 conjugated goat anti-rabbit

IgG (BA1127) was used as secondary antibody at 1:100 dilution for

30 minutes at 20°C. Isotype control antibody (Green line) was rabbit

IgG at 1:100 dilution used under the same conditions. Unlabelled

sample without incubation with primary antibody and secondary

antibody (Red line) was used as a blank control.