

Basic Information

Product Name	Anti-MFSD12 Antibody	
Gene Name	MFSD12	
Source	Rabbit	
Clonality	Polyclonal	
Isotype	IgG	
Species Reactivity	human	
Tested Application	WB, IHC, ELISA	
Contents	500 ug/ml antibody with PBS, 0.02% NaN3, 1 mg/ml BSA and 50% glycerol.	
Immunogen	E.coli-derived human MFSD12 recombinant protein (Position: Q66-H443). Human MFSD12 shares 86.8% amino acid (aa) sequence identity with mouse MFSD12.	
Concentration	500 ug/ml	
Purification	Immunogen affinity purified.	
Observed MW	52 kDa	
Dilution Ratios	Western blot (WB):	1:500-2000
	Immunohistochemistry (IHC):	1:50-400
	Enzyme linked immunosorbent assay (ELISA):	1:100-1000
	(Boiling the paraffin sections in 10mM citrate buffer,pH6.0,or PH8.0 EDTA repair liquid for 20 mins is required for the staining of formalin/paraffin sections.) Optimal working dilutions must be determined by end user.	

Storage

12 months from date of receipt, -20°C as supplied.

Background Information

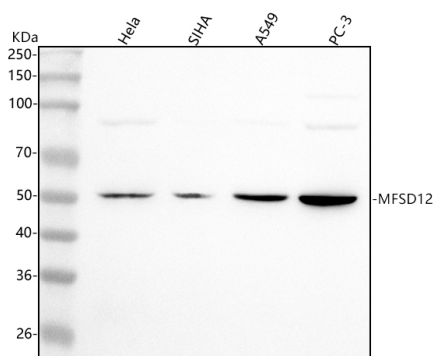
The major facilitator superfamily consists of presumed carbohydrate transporters with 10-12 membrane-spanning domains. MFSD12 (major facilitator superfamily domain containing 12), also known as PP3501 or C19orf28, is a 480 amino acid multi-pass membrane protein that belongs to the major facilitator superfamily. Existing as two alternatively spliced isoforms, MFSD12 is encoded by a gene that maps to human chromosome 19p13.3. Chromosome 19 consists of over 63 million bases, houses approximately 1,400 genes and is recognized for having the greatest gene density of the human chromosomes. It is the genetic home for a number of immunoglobulin (Ig) superfamily members, including the

killer cell and leukocyte Ig-like receptors, a number of ICAMs, the CEACAM and PSG families, and Fc receptors (FcRs).

Reference

Anti-MFSD12 Antibody被引用在1文献中。

Selected Validation Data



Western blot analysis of anti-MFSD12 antibody (A16855-1). The sample well of each lane was loaded with 30 ug of sample under reducing conditions.

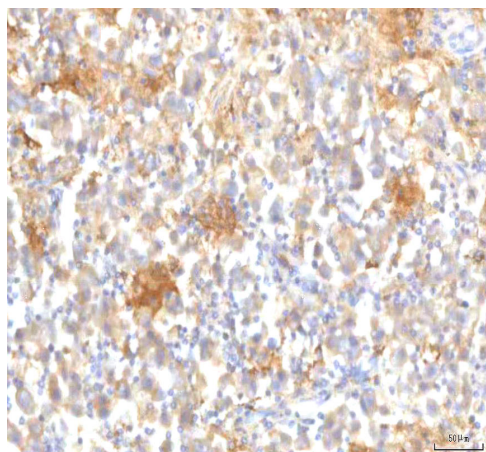
Lane 1: human HeLa whole cell lysates,

Lane 2: human SiHa whole cell lysates,

Lane 3: human A549 whole cell lysates,

Lane 4: human PC-3 whole cell lysates.

After electrophoresis, proteins were transferred to a membrane. Then the membrane was incubated with rabbit anti-MFSD12 antigen affinity purified polyclonal antibody (A16855-1) and probed with a goat anti-rabbit IgG-HRP secondary antibody (Catalog # BA1054). The signal is developed using ECL Plus Western Blotting Substrate (Catalog # AR1197). A specific band was detected for MFSD12 at approximately 52 kDa. The expected band size for MFSD12 is at 52 kDa.



IHC analysis of MFSD12 using anti-MFSD12 antibody (A16855-1). MFSD12 was detected in a paraffin-embedded section of human testicular seminoma tissue. The tissue section was developed using HRP Conjugated Rabbit IgG Super Vision Assay Kit (Catalog # SV0002) with DAB (Catalog # AR1027) as the chromogen.

Product datasheet

Anti-MFSD12 Antibody

Catalog Number: **A16855-1**



antibody and ELISA experts

BOSTER BIOLOGICAL TECHNOLOGY

Building C21, 3rd to 5th Floors, Optics Valley Biopharmaceutical Accelerator,
East Lake High-Tech Development Zone, Wuhan.

Web: www.boster.com **Phone:** 027-67845390/1/2 **Email:** boster@boster.com