

Basic Information

Product Name	Anti-C10/CCL6 Antibody	
Gene Name	CCL6	
Source	Rabbit	
Clonality	Polyclonal	
Isotype	IgG	
Species Reactivity	mouse, rat	
Tested Application	WB, IHC, ELISA(Cap)	
Contents	500 ug/ml antibody with PBS, 0.02% NaN ₃ , 1 mg/ml BSA and 50% glycerol.	
Immunogen	E. coli-derived mouse CCL6 recombinant protein (Position: G22-A116).	
Concentration	500 ug/ml	
Purification	Immunogen affinity purified.	
Observed MW	13 kDa	
Dilution Ratios	Western blot (WB): 1:500-2000 Immunohistochemistry (IHC): 1:50-400 ELISA(Cap): 1:50-1:200 (Boiling the paraffin sections in 10mM citrate buffer,pH6.0,or PH8.0 EDTA repair liquid for 20 mins is required for the staining of formalin/paraffin sections.) Optimal working dilutions must be determined by end user.	

Storage

12 months from date of receipt, -20°C as supplied.

Background Information

Chemokine (C-C motif) ligand 6 (CCL6) is a small cytokine belonging to the CC chemokine family that has only been identified in rodents. In mice, CCL6 is expressed in cells from neutrophil and macrophage lineages, and can be greatly induced under conditions suitable for myeloid cell differentiation. It is highly expressed in bone marrow cultures that have been stimulated with the cytokine GM-CSF. Some low levels of gene expression also occur in certain cell lines of myeloid origin (e.g. the immature myeloid cell lines DA3 and 32D cl3, and the macrophage cell line P388D) that can also be greatly induced in culture with GM-CSF. However, in activated T cell lines, expression of CCL6 is greatly reduced. CCL6 can also be induced in the mouse lung by the cytokine interleukin 13. Mouse CCL6 is located on chromosome 11. The cell surface receptor for CCL6 is believed to be the chemokine receptor CCR1.

Reference

Anti-C10/CCL6 Antibody 被引用在1文献中。

Selected Validation Data

KDa

72-

55-

43-

34-

26-

17-

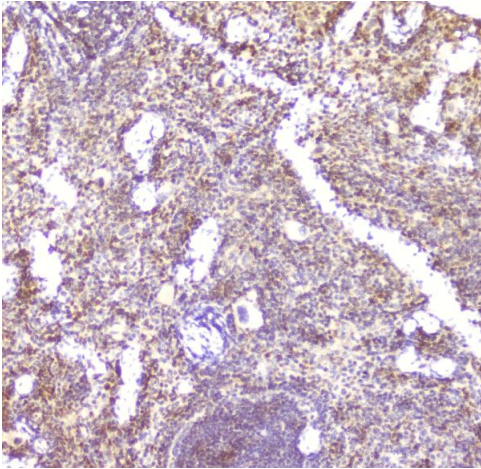
10-



Western blot analysis of C10/CCL6 using anti-C10/CCL6 antibody (A30384).

Lane 1: recombinant mouse CCL6 protein 1ng.

After electrophoresis, proteins were transferred to a membrane. Then the membrane was incubated with rabbit anti-C10/CCL6 antigen affinity purified polyclonal antibody (A30384) at a dilution of 1:1000 and probed with a goat anti-rabbit IgG-HRP secondary antibody (Catalog # BA1054). The signal is developed using ECL Plus Western Blotting Substrate (Catalog # AR1197). A specific band was detected for C10/CCL6 at approximately 13 kDa.



IHC analysis of C10/CCL6 using anti-C10/CCL6 antibody (A30384). C10/CCL6 was detected in a paraffin-embedded section of mouse spleen tissue. Biotinylated goat anti-rabbit IgG was used as secondary antibody. The tissue section was incubated with rabbit anti-C10/CCL6 Antibody (A30384) at a dilution of 1:200 and developed using Streptavidin-Biotin-Complex (SABC) (Catalog # SA1022) with DAB (Catalog # AR1027) as the chromogen.