

## Basic Information

Product Name	Anti-MKL1/MRTFA Antibody	
Gene Name	MRTFA	
Source	Rabbit	
Clonality	Polyclonal	
Isotype	IgG	
Species Reactivity	human	
Tested Application	WB, ICC/IF, ELISA	
Contents	500 ug/ml antibody with PBS, 0.02% NaN <sub>3</sub> , 1 mg/ml BSA and 50% glycerol.	
Immunogen	E.coli-derived human Mkl1/MRTFA recombinant protein (Position: L192-L931).	
Concentration	500 ug/ml	
Purification	Immunogen affinity purified.	
Observed MW	145 kDa	
Dilution Ratios	Western blot (WB): 1:500-2000 Immunocytochemistry/Immunofluorescence (ICC/IF): 1:50-400 Enzyme linked immunosorbent assay (ELISA): 1:100-1000	

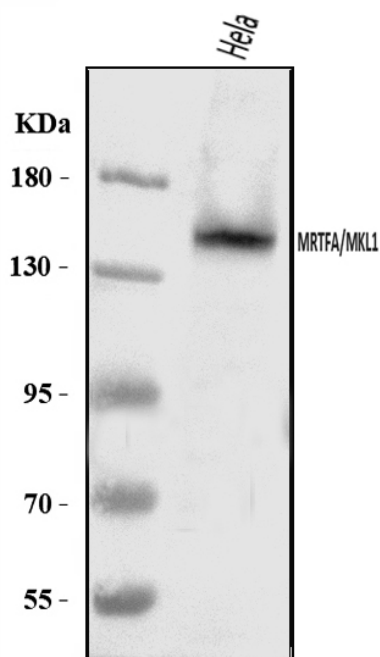
## Storage

12 months from date of receipt, -20°C as supplied.

## Background Information

The protein encoded by this gene interacts with the transcription factor myocardin, a key regulator of smooth muscle cell differentiation. The encoded protein is predominantly nuclear and may help transduce signals from the cytoskeleton to the nucleus. This gene is involved in a specific translocation event that creates a fusion of this gene and the RNA-binding motif protein-15 gene. This translocation has been associated with acute megakaryocytic leukemia. Alternative splicing results in multiple transcript variants.

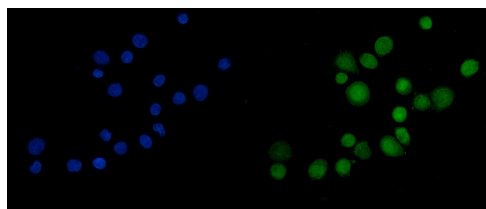
## Selected Validation Data



Western blot analysis of MKL1/MRTFA using anti-MKL1/MRTFA antibody (A32468-2). The sample well of each lane was loaded with 30 ug of sample under reducing conditions.

Lane 1: Hela whole cell lysates.

After electrophoresis, proteins were transferred to a membrane. Then the membrane was incubated with rabbit anti-MKL1/MRTFA antigen affinity purified polyclonal antibody (A32468-2) at a dilution of 1:1000 and probed with a goat anti-rabbit IgG-HRP secondary antibody (Catalog # BA1054). The signal is developed using ECL Plus Western Blotting Substrate (Catalog # AR1197). A specific band was detected for MKL1/MRTFA at approximately 145 kDa. The expected band size for MKL1/MRTFA is at 99 kDa.



IF analysis of MKL1/MRTFA using anti-MKL1/MRTFA antibody (A32468-2). MKL1/MRTFA was detected in an immunocytochemical section of SiHa cells. The section was incubated with rabbit anti-MKL1/MRTFA Antibody (A32468-2) at a dilution of 1:100. DyLight®488 Conjugated Goat Anti-Rabbit IgG (Green) (Catalog # BA1127) was used as secondary antibody. The section was counterstained with DAPI (Catalog # AR1176) (Blue).