

## Basic Information

Product Name	Anti-TIM2/TIMD2 Antibody	
Gene Name	TIMD2	
Source	Rabbit	
Clonality	Polyclonal	
Isotype	IgG	
Species Reactivity	mouse, rat	
Tested Application	WB, IHC, IF, FCM	
Contents	500 ug/ml antibody with PBS, 0.02% NaN <sub>3</sub> , 1 mg/ml BSA and 50% glycerol.	
Immunogen	A synthetic peptide corresponding to a sequence at the C-terminus of mouse Tim 2/Timd2, which shares 73.9% amino acid (aa) sequence identity with rat Timd2.	
Concentration	500 ug/ml	
Purification	Immunogen affinity purified.	
Observed MW	70 kDa	
Dilution Ratios	Western blot (WB): 1:500-2000 Immunohistochemistry (IHC): 1:50-400 Immunofluorescence (IF): 1:50-400 Flow Cytometry (Fixed): 1:50-200 (Boiling the paraffin sections in 10mM citrate buffer,pH6.0,or PH8.0 EDTA repair liquid for 20 mins is required for the staining of formalin/paraffin sections.) Optimal working dilutions must be determined by end user.	

## Storage

12 months from date of receipt, -20°C as supplied.

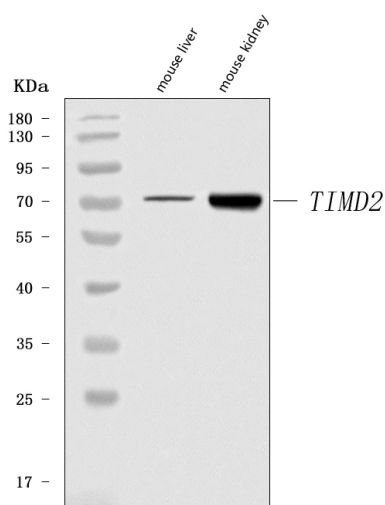
## Background Information

Enables ferritin receptor activity. Acts upstream of or within iron ion transport. Located in cell surface. Is expressed in 4-cell stage embryo; liver; liver left lobe; liver right lobe; and metanephros. Human ortholog(s) of this gene implicated in atopic dermatitis. Orthologous to human HAVCR1 (hepatitis A virus cellular receptor 1).

## Reference

Anti-TIM2/TIMD2 Antibody被引用在1文献中。

## Selected Validation Data



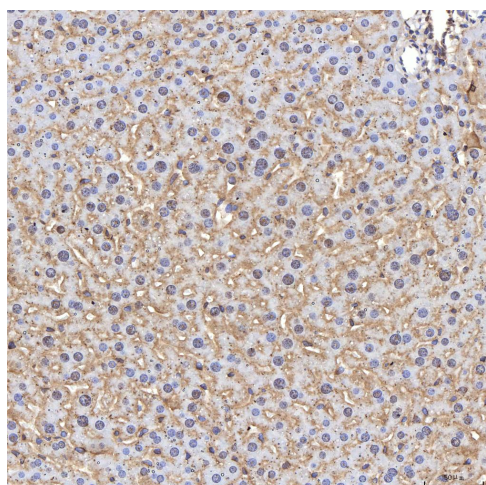
Western blot analysis of TIM2/TIMD2 using anti-TIM2/TIMD2 antibody (A32807). The sample well of each lane was loaded with 30 ug of sample under reducing conditions.

Lane 1: mouse liver tissue lysates,

Lane 2: mouse kidney tissue lysates.

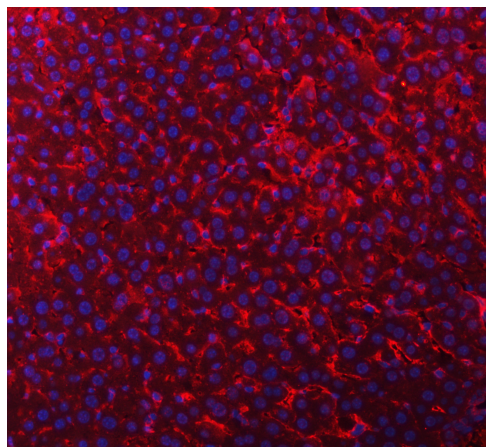
After electrophoresis, proteins were transferred to a membrane.

Then the membrane was incubated with rabbit anti-TIM2/TIMD2 antigen affinity purified polyclonal antibody (A32807) at a dilution of 1:1000 and probed with a goat anti-rabbit IgG-HRP secondary antibody (Catalog # BA1054). The signal is developed using ECL Plus Western Blotting Substrate (Catalog # AR1197). A specific band was detected for TIM2/TIMD2 at approximately 70 kDa. The expected band size for TIM2/TIMD2 is at 34 kDa.

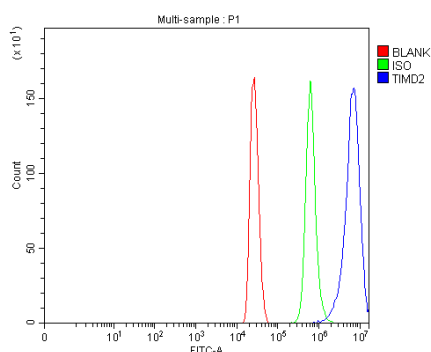


IHC analysis of TIM2/TIMD2 using anti-TIM2/TIMD2 antibody (A32807).

TIM2/TIMD2 was detected in a paraffin-embedded section of mouse liver tissue. The tissue section was incubated with rabbit anti-TIM2/TIMD2 Antibody (A32807) at a dilution of 1:200 and developed using HRP Conjugated Rabbit IgG Super Vision Assay Kit (Catalog # SV0002) with DAB (Catalog # AR1027) as the chromogen.



IF analysis using anti- TIM2/TIMD2 antibody (A32807) detected in paraffin-embedded section of mouse liver tissue. The tissue section were stained using the Fluoro550-conjugated Anti-rabbit IgG Secondary Antibody (red)(Catalog#BA1135) and counterstained with DAPI (blue).



Flow Cytometry analysis of Hepa1-6 cells using anti-TIM2/TIMD2 antibody (A32807).

Overlay histogram showing Hepa1-6 cells stained with A32807 (Blue line). The cells were fixed with 4% paraformaldehyde and blocked with 10% normal goat serum. And then incubated with rabbit anti-TIM2/TIMD2 Antibody (A32807) at 1:100 dilution for 30 min at 20°C. Fluoro488 conjugated goat anti-rabbit IgG (BA1127) was used as secondary antibody at 1:100 dilution for 30 minutes at 20°C. Isotype control antibody (Green line) was rabbit IgG at 1:100 dilution used under the same conditions. Unlabelled sample without incubation with primary antibody and secondary antibody (Red line) was used as a blank control.