

Basic Information

Product Name	Anti-TAU/MAPT Antibody
Gene Name	MAPT
Source	Rabbit
Clonality	Polyclonal
Isotype	IgG
Species Reactivity	human, mouse, rat
Tested Application	WB
Contents	500 ug/ml antibody with PBS, 0.02% NaN ₃ , 1 mg/ml BSA and 50% glycerol.
Immunogen	A synthetic peptide corresponding to a sequence at the N-terminus of human Tau, different from the related mouse and rat sequences by three amino acids.
Concentration	500 ug/ml
Purification	Immunogen affinity purified.
Observed MW	50-80 kDa
Dilution Ratios	Western blot (WB):1:500-2000

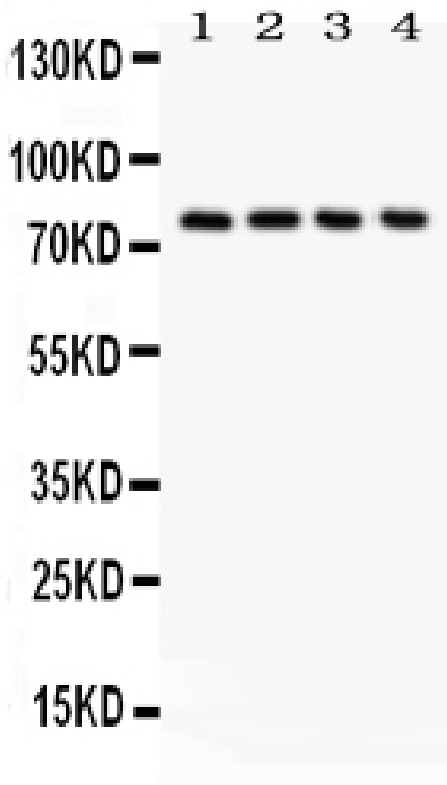
Storage

12 months from date of receipt, -20°C as supplied.

Background Information

MAPT, Microtubule-associated protein tau, appears to be enriched in axons. The MAPT gene is assigned to chromosome 17 by hybridization of a cDNA clone to flow-sorted and spot-blotted chromosomes and to 17q21 by in situ hybridization, containing 16 exons. The tau proteins are the product of alternative splicing from a single gene that in humans is designated MAPT. Tau proteins are proteins that stabilize microtubules. They are abundant in neurons in the central nervous system and are less common elsewhere. When tau proteins are defective, and no longer stabilize microtubules properly, they can result in dementias such as Alzheimer's disease.

Selected Validation Data



Western blot analysis of TAU/MAPT using anti-TAU/MAPT antibody (BA0140). The sample well of each lane was loaded with 30 ug of sample under reducing conditions.

Lane 1: Mouse brain tissue lysates,

Lane 2: Mouse brain tissue lysates,

Lane 3: HT1080 whole cell lysates,

Lane 4: MCF-7 whole cell lysates.

After electrophoresis, proteins were transferred to a membrane. Then the membrane was incubated with rabbit anti-TAU/MAPT antigen affinity purified polyclonal antibody (BA0140) at a dilution of 1:1000 and probed with a goat anti-rabbit IgG-HRP secondary antibody (Catalog # BA1054). The signal is developed using ECL Plus Western Blotting Substrate (Catalog # AR1197). A specific band was detected for TAU/MAPT at approximately 50-80 kDa. The expected band size for TAU/MAPT is at 79 kDa.