

Basic Information

Product Name	Anti-TGF Beta 1/TGFB1 Antibody	
Gene Name	TGFB1	
Source	Rabbit	
Clonality	Polyclonal	
Isotype	IgG	
Species Reactivity	human, mouse, rat, rabbit	
Tested Application	WB, IHC	
Contents	500 ug/ml antibody with PBS, 0.02% NaN ₃ , 1 mg/ml BSA and 50% glycerol.	
Immunogen	Polypeptide	
Concentration	500 ug/ml	
Purification	Immunogen affinity purified.	
Observed MW	14 kDa/48 kDa	
Dilution Ratios	Western blot (WB): 1:500-2000 Immunohistochemistry (IHC): 1:50-400 (Boiling the paraffin sections in 10mM citrate buffer,pH6.0,or PH8.0 EDTA repair liquid for 20 mins is required for the staining of formalin/paraffin sections.) Optimal working dilutions must be determined by end user.	

Storage

12 months from date of receipt, -20°C as supplied. 6 months 2 to 8°C after reconstitution. Avoid repeated freezing and thawing.

Background Information

This gene encodes a member of the transforming growth factor beta (TGFB) family of cytokines, which are multifunctional peptides that regulate proliferation, differentiation, adhesion, migration, and other functions in many cell types. Many cells have TGFB receptors, and the protein positively and negatively regulates many other growth factors. The secreted protein is cleaved into a latency-associated peptide (LAP) and a mature TGFB1 peptide, and is found in either a latent form composed of a TGFB1 homodimer, a LAP homodimer, and a latent TGFB1-binding protein, or in an active form composed of a TGFB1 homodimer. The mature peptide may also form heterodimers with other TGFB family members. This gene is frequently upregulated in tumor cells, and mutations in this gene result in Camurati-Engelmann disease.

Reference

Anti-TGF Beta 1/TGFB1 Antibody被引用在152文献中。

Selected Validation Data



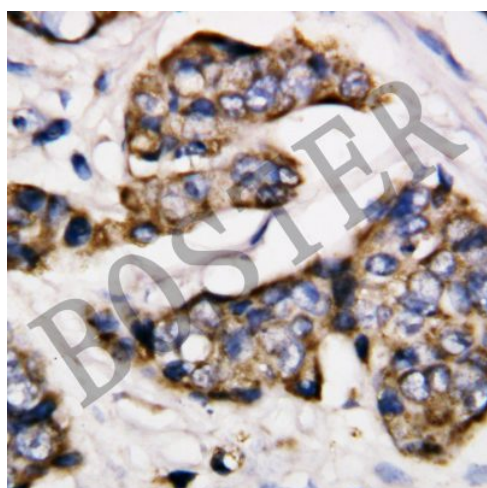
Western blot analysis of TGF Beta 1/TGFB1 using anti-TGF Beta 1/TGFB1 antibody (BA0290). The sample well of each lane was loaded with 30 ug of sample under reducing conditions.

Lane 1: Smmc whole cell lysates,

Lane 2: RH35 whole cell lysates,

Lane 3: HepA whole cell lysates.

After electrophoresis, proteins were transferred to a membrane. Then the membrane was incubated with rabbit anti-TGF Beta 1/TGFB1 antigen affinity purified polyclonal antibody (BA0290) at a dilution of 1:1000 and probed with a goat anti-rabbit IgG-HRP secondary antibody (Catalog # BA1054). The signal is developed using ECL Plus Western Blotting Substrate (Catalog # AR1197). A specific band was detected for TGF Beta 1/TGFB1 at approximately 14 kDa/48 kDa. The expected band size for TGF Beta 1/TGFB1 is at 44 kDa.



IHC analysis of TGF Beta 1/TGFB1 using anti-TGF Beta 1/TGFB1 antibody (BA0290).

TGF Beta 1/TGFB1 was detected in a paraffin-embedded section of human mammary cancer tissue. The tissue section was incubated with rabbit anti-TGF Beta 1/TGFB1 Antibody (BA0290) at a dilution of 1:200 and developed using HRP Conjugated Rabbit IgG Super Vision Assay Kit (Catalog # SV0002) with DAB (Catalog # AR1027) as the chromogen.