

## Basic Information

<b>Product Name</b>	Anti-VEGFR2/KDR Antibody	
<b>Gene Name</b>	KDR	
<b>Source</b>	Rabbit	
<b>Clonality</b>	Polyclonal	
<b>Isotype</b>	IgG	
<b>Species Reactivity</b>	human	
<b>Tested Application</b>	WB, IHC, ICC/IF	
<b>Contents</b>	500 ug/ml antibody with PBS, 0.02% NaN3, 1 mg/ml BSA and 50% glycerol.	
<b>Immunogen</b>	A synthetic peptide corresponding to a sequence in the middle region of human VEGF Receptor 2.	
<b>Concentration</b>	500 ug/ml	
<b>Purification</b>	Immunogen affinity purified.	
<b>Observed MW</b>	180-250 kDa	
<b>Dilution Ratios</b>	Western blot (WB):	1:500-2000
	Immunohistochemistry (IHC):	1:50-400
	Immunocytochemistry/Immunofluorescence (ICC/IF):	1:50-400
	(Boiling the paraffin sections in 10mM citrate buffer,pH6.0,or PH8.0 EDTA repair liquid for 20 mins is required for the staining of formalin/paraffin sections.) Optimal working dilutions must be determined by end user.	

## Storage

12 months from date of receipt, -20°C as supplied.

## Background Information

KDR(Kinase Insert Domain Receptor), also known as FLK1, VEGFR or VEGFR2, is a VEGF receptor. KDR is the human gene encoding it. Sait et al.(1995) likewise corrected the assignment to chromosome 4q11-q12 to the same region occupied also by PDGFRA and KIT, thus indicating the location of a cluster of receptor tyrosine kinase genes. Vascular endothelial growth factor(VEGF) is the only mitogen that specifically acts on endothelial cells. Its expression is upregulated by hypoxia, and its cell-surface receptor, known as fetal liver kinase-1(Flk1) in mouse, is exclusively expressed in endothelial cells(Plate et al., 1993). Flk1 is the mouse homolog of KDR(Matthews et al., 1991).

Product datasheet

## Anti-VEGFR2/KDR Antibody

Catalog Number: **BA0472**

**BOSTER**<sup>®</sup>

antibody and ELISA experts

**BOSTER BIOLOGICAL TECHNOLOGY**

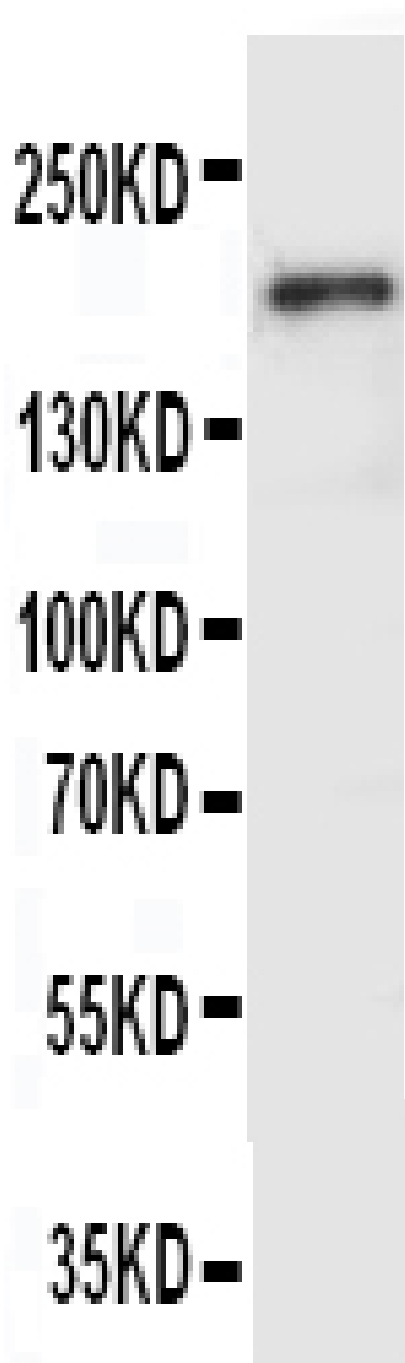
Building C21, 3rd to 5th Floors, Optics Valley Biopharmaceutical Accelerator,  
East Lake High-Tech Development Zone, Wuhan.

**Web:** [www.boster.com](http://www.boster.com) **Phone:** 027-67845390/1/2 **Email:** [boster@boster.com](mailto:boster@boster.com)

## Reference

Anti-VEGFR2/KDR Antibody被引用在4文献中。

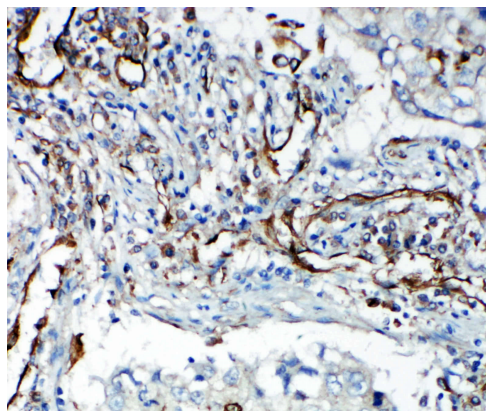
## Selected Validation Data



Western blot analysis of VEGFR2/KDR using anti-VEGFR2/KDR antibody (BA0472). The sample well of each lane was loaded with 30 ug of sample under reducing conditions.

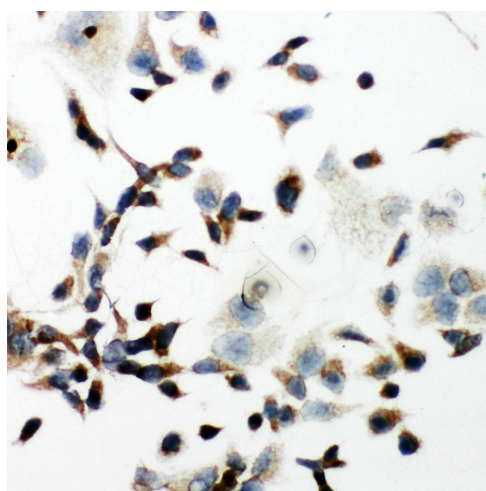
Lane 1: human SMMC whole cell lysates.

After electrophoresis, proteins were transferred to a membrane. Then the membrane was incubated with rabbit anti-VEGFR2/KDR antigen affinity purified polyclonal antibody (BA0472) at a dilution of 1:1000 and probed with a goat anti-rabbit IgG-HRP secondary antibody (Catalog # BA1054). The signal is developed using ECL Plus Western Blotting Substrate (Catalog # AR1197). A specific band was detected for VEGFR2/KDR at approximately 180-250 kDa. The expected band size for VEGFR2/KDR is at 180-250 kDa.



IHC analysis of VEGFR2/KDR using anti-VEGFR2/KDR antibody (BA0472).

VEGFR2/KDR was detected in a paraffin-embedded section of human lung cancer tissue. The tissue section was incubated with rabbit anti-VEGFR2/KDR Antibody (BA0472) at a dilution of 1:200 and developed using HRP Conjugated Rabbit IgG Super Vision Assay Kit (Catalog # SV0002) with DAB (Catalog # AR1027) as the chromogen.



ICC analysis of VEGFR2/KDR using anti- VEGFR2/KDR antibody (BA0472).

VEGFR2/KDR was detected in an immunocytochemical section of HeLa cells. The section was incubated with rabbit anti-VEGFR2/KDR Antibody (BA0472) at a dilution of 1:100. Biotinylated goat anti-rabbit IgG was used as secondary antibody. The section was developed using Streptavidin-Biotin-Complex (SABC)(Catalog # SA1022) with DAB (Catalog # AR1027) as the chromogen.