

Basic Information

Product Name	Anti-FGFR1 Antibody	
Gene Name	FGFR1	
Source	Rabbit	
Clonality	Polyclonal	
Isotype	IgG	
Species Reactivity	human, mouse, rat	
Tested Application	WB, IHC	
Contents	500 ug/ml antibody with PBS, 0.02% NaN3, 1 mg/ml BSA and 50% glycerol.	
Immunogen	A synthetic peptide corresponding to a sequence at the C-terminus of human FGFR1, different from the related mouse sequence by two amino acids and rat sequence by three amino acids.	
Concentration	500 ug/ml	
Purification	Immunogen affinity purified.	
Observed MW	92,140 kDa	
Dilution Ratios	Western blot (WB): 1:500-2000 Immunohistochemistry (IHC): 1:50-400 (Boiling the paraffin sections in 10mM citrate buffer,pH6.0,or PH8.0 EDTA repair liquid for 20 mins is required for the staining of formalin/paraffin sections.) Optimal working dilutions must be determined by end user.	

Storage

12 months from date of receipt, -20°C as supplied.

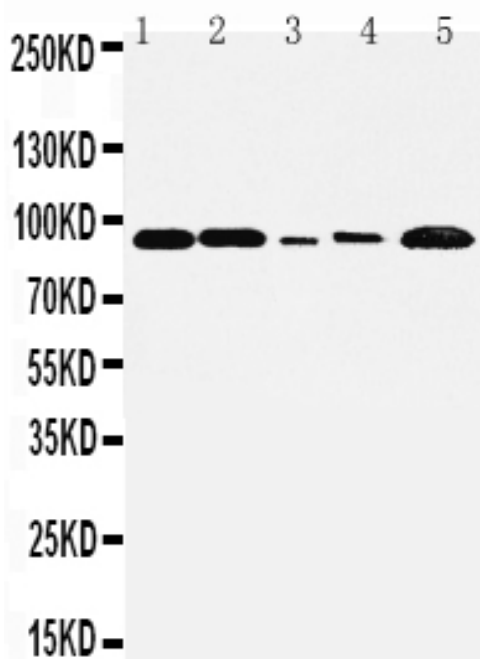
Background Information

FGFR1, Fibroblast growth factor receptor 1, also known as basic fibroblast growth factor receptor 1, fms-related tyrosine kinase-2/Pfeiffer syndrome, and CD331, is a receptor tyrosine kinase whose ligands are specific members of the fibroblast growth factor family. The FGFR1 gene is localized to 8p12-p11.2 by in situ hybridization. FGFR1 is essential for the normal formation of the organ of Corti and that phenotype severity observed in FGFR1 mutants is dependent on the dose of FGFR1. Mutations in this gene have been associated with Pfeiffer syndrome, Jackson-Weiss syndrome, Antley-Bixler syndrome, osteoglophonic dysplasia, squamous cell lung cancer and autosomal dominant Kallmann syndrome 2.

Reference

Anti-FGFR1 Antibody被引用在6文献中。

Selected Validation Data



Western blot analysis of FGFR1 using anti-FGFR1 antibody (BA0485). The sample well of each lane was loaded with 30 ug of sample under reducing conditions.

Lane 1: Rat Liver tissue lysates,

Lane 2: Rat Brain tissue lysates,

Lane 3: SMMC whole cell lysates,

Lane 4: HT1080 whole cell lysates,

Lane 5: MM231 whole cell lysates.

After electrophoresis, proteins were transferred to a membrane.

Then the membrane was incubated with rabbit anti-FGFR1 antigen

affinity purified polyclonal antibody (BA0485) at a dilution of 1:1000

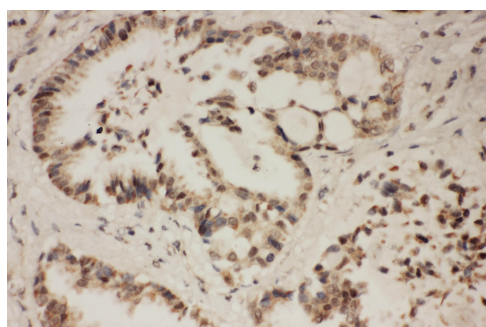
and probed with a goat anti-rabbit IgG-HRP secondary antibody

(Catalog # BA1054). The signal is developed using ECL Plus Western

Blotting Substrate (Catalog # AR1197). A specific band was detected

for FGFR1 at approximately 92,140 kDa. The expected band size for

FGFR1 is at 92 kDa.



IHC analysis of FGFR1 using anti-FGFR1 antibody (BA0485).

FGFR1 was detected in a paraffin-embedded section of human lung

cancer tissue. The tissue section was incubated with rabbit anti-

FGFR1 Antibody (BA0485) at a dilution of 1:200 and developed using

HRP Conjugated Rabbit IgG Super Vision Assay Kit (Catalog #

SV0002) with DAB (Catalog # AR1027) as the chromogen.

Product datasheet

Anti-FGFR1 Antibody

Catalog Number: **BA0485**



antibody and ELISA experts

BOSTER BIOLOGICAL TECHNOLOGY

Building C21, 3rd to 5th Floors, Optics Valley Biopharmaceutical Accelerator,
East Lake High-Tech Development Zone, Wuhan.

Web: www.boster.com **Phone:** 027-67845390/1/2 **Email:** boster@boster.com