

Basic Information

| | | |
|--------------------|---|--|
| Product Name | Anti-TIMP1 Antibody | |
| Gene Name | TIMP1 | |
| Source | Rabbit | |
| Clonality | Polyclonal | |
| Isotype | IgG | |
| Species Reactivity | human | |
| Tested Application | WB, IHC | |
| Contents | 500 ug/ml antibody with PBS, 0.02% NaN ₃ , 1 mg/ml BSA and 50% glycerol. | |
| Immunogen | A synthetic peptide corresponding to a sequence at the C-terminus of human TIMP-1. | |
| Concentration | 500 ug/ml | |
| Purification | Immunogen affinity purified. | |
| Observed MW | 23-28 kDa | |
| Dilution Ratios | Western blot (WB): 1:500-2000 Immunohistochemistry (IHC): 1:50-400 (Boiling the paraffin sections in 10mM citrate buffer, pH6.0, or PH8.0 EDTA repair liquid for 20 mins is required for the staining of formalin/paraffin sections.) Optimal working dilutions must be determined by end user. | |

Storage

12 months from date of receipt, -20°C as supplied.

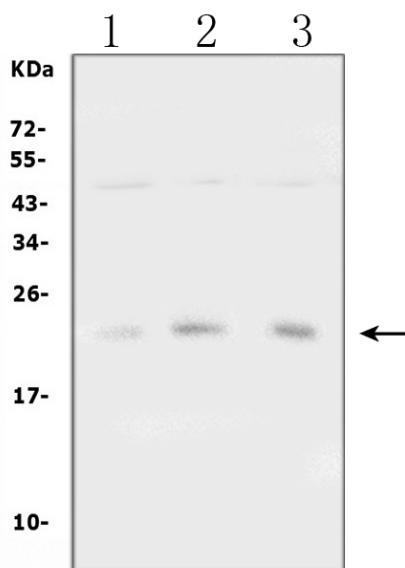
Background Information

TIMP metalloproteinase inhibitor 1, also known as TIMP1, a tissue inhibitor of metalloproteinases, is a glycoprotein that is expressed from the several tissues of organisms. This protein is a member of the TIMP family. The glycoprotein is a natural inhibitor of the matrix metalloproteinases (MMPs), a group of peptidases involved in degradation of the extracellular matrix. In addition to its inhibitory role against most of the known MMPs, the encoded protein is able to promote cell proliferation in a wide range of cell types, and may also have an anti-apoptotic function. Transcription of this gene is highly inducible in response to many cytokines and hormones. TIMP was found to be located about 22 cm proximal to OTC(300461).

Reference

Anti-TIMP1 Antibody被引用在16文献中。

Selected Validation Data



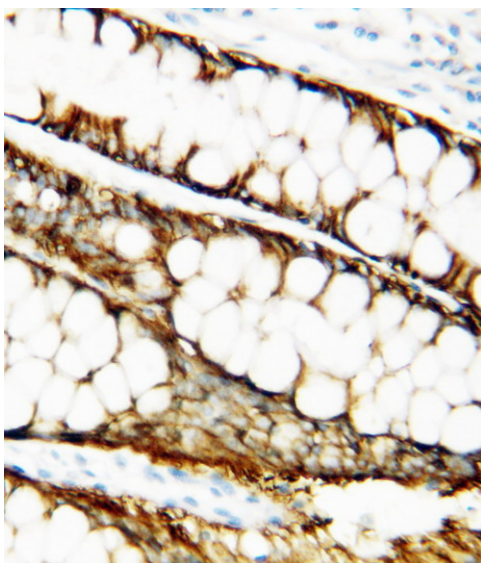
Western blot analysis of TIMP1 using anti-TIMP1 antibody (BA0575). The sample well of each lane was loaded with 30 ug of sample under reducing conditions.

Lane 1: human U-87MG whole cell lysates,

Lane 2: human U2OS whole cell lysates,

Lane 3: human PC-3 whole cell lysates.

After electrophoresis, proteins were transferred to a membrane. Then the membrane was incubated with rabbit anti-TIMP1 antigen affinity purified polyclonal antibody (BA0575) at a dilution of 1:1000 and probed with a goat anti-rabbit IgG-HRP secondary antibody (Catalog # BA1054). The signal is developed using ECL Plus Western Blotting Substrate (Catalog # AR1197). A specific band was detected for TIMP1 at approximately 23-28 kDa. The expected band size for TIMP1 is at 23 kDa.



IHC analysis of TIMP1 using anti-TIMP1 antibody (BA0575).

TIMP1 was detected in a paraffin-embedded section of human mammary cancer tissue. The tissue section was incubated with rabbit anti-TIMP1 Antibody (BA0575) at a dilution of 1:200 and developed using HRP Conjugated Rabbit IgG Super Vision Assay Kit (Catalog # SV0002) with DAB (Catalog # AR1027) as the chromogen.